

**aurora**  
LIGHT THE FUTURE



## LIGHT

- 04** DANTE
- 05** ORION
- 06** DIGIS
- 07** FUSION
- 08** GENESIS
- 09** SUNLIGHT
- 10** C LUX
- 11** LUMA
- 12** BLP BACK-LIT LED PANEL
- 13** 1000F

## SOFTBOX

- 15** QLOCK SYSTEM
- 16** TERA SOFTBOX
- 17** BOUNCE N FOCUS
- 18** FIREFLY PAR
- 19** FIREFLY XL
- 20** SOFTBOX
- 21** LOUVER
- 22** VIDEO PLUS
- 23** SOFTBOX FOR LED PANEL
- 24** SPEEDRING / ADAPTER
- 25** FIREFLY DUET
- 26** FIREFLY BEAUTY BOX II / FIREFLY PAR 65
- 27** MICROBOX / PORTAFLEX
- 28** STRIP BOUNCE
- 29** SPEED BOUNCE

## ACCESSORY

- 31** UMBRELLA
- 32** REFLECTOR
- 33** BUTTERFLY / LITE FILTER
- 34** LIGHT STAND / CARRYING BAG
- 35** HARD REFLECTOR
- GEL FILTER / BARNDORF
- HONEYCOMB GRID



# LIGHT

Next generation lights designed for photography, videography, and broadcasting. Using precision voltage regulation, Aurora lighting system produce consistent and accurate power based on the power settings and feature minimal color shift.

# DANTE

Action Freezing TTL Flash



CE RoHS

## Cordless battery or AC power adapter



Energy efficient and portable Li-Po battery allows 300 times of flash at full power and tens of thousands of at the lowest power while recharging from empty to full takes 2 hours.

Outdoor location shooting becomes much simpler without power cords and long lasting and easy to change battery pack.

Sharing the same housing, AC power adapter and Li-Po battery pack are interchangeable. AC power adapter is ideal for long hour of indoor shooting and battery pack is recommended for on-location shooting where access to AC power is limited.

## Multi mode

Multi mode is to capture a sequence of moving images in a single photograph. Firing a number of flashes in a rapid series almost simultaneously is simple and certain with DANTE's multi mode. Just set a flash power and total number of simultaneous flash and firing frequency Hz.



## TTL and HSS



Integrating Cactus V6P receiver module, Dante supports cross-brand TTL, cross-brand High-speed Sync, and can remote control flash power. Cross-brand TTL works across Canon, Fujifilm, Nikon, Olympus, Panasonic, Pentax and Sigma flashes all at the same time. Normal HSS mode supports shutter speed up to 1/8000s and when normal HSS is not powerful enough, Power sync mode boosts flash contribution above camera's x-sync speed.



<b>Model</b>	Dante 400
<b>Power increment</b>	1/10 f-stop
<b>Flash power variation</b>	1/256-Full
<b>Recharging time</b>	0.01sec-2.1sec
<b>Input voltage</b>	DC 16.8V
<b>Mode for flash duration</b>	Normal or Multi
<b>No. of flash at Multi mode</b>	Up to 40 flashes
<b>Flash duration at min power T0.5</b>	1/45,000sec
<b>Flash duration at max power T0.5</b>	1/520sec
<b>Voltage stabilization</b>	±0.1%
<b>Color temperature</b>	5500±100°K
<b>Power display</b>	Digital LCD screen
<b>Modeling lamp</b>	COB LED 10W
<b>Modeling control</b>	OFF/Track/Full/Free 0-99%
<b>Sync voltage</b>	DC 5V
<b>Sync mode</b>	Slave/Radio/Slave+Radio
<b>Dimension (L x W x H)</b>	26.4cmx12.8cmx12.6cm
<b>Weight without battery</b>	2.5kg
<b>RF control</b>	Cactus V6P integrated, 4 groups 16 channels
<b>RF operating range</b>	100m
<b>TTL</b>	Yes w/multimaster feature
<b>HSS</b>	Up to 1/8000sec
<b>Power Sync</b>	Yes
<b>Ready Indication</b>	Beep/Dim/Beep-Dim/Off
<b>Completed with</b>	Power cord, Spare fuse, USB cable for firmware update
<b>Li-Po Battery</b>	14.8V 5000mAh
<b>Recharging time from empty</b>	2hours(16.8V, 4A), 3hours(16.8V, 2.5A)
<b>No. of flash at full power</b>	300
<b>Dimension of Battery (L x W x H)</b>	12.7cmx11.5cmx6.5cm
<b>Weight of Battery</b>	1.2kg



# ORION

Orion-200 / Orion-400



Power display

Optical slave

Alarm

Modeling lamp mode

Sync socket

Modeling lamp fuse

Main fuse



Photo cell

Power control

Test

Power on/off

Power socket

## Orion Kits



### OK4U2

Orion 200 X 2  
Light Stand 198cm X 2  
Umbrella 85cm X 2  
Power Cord X 2  
Sync Cord X 1  
Standard Reflector X 2  
Modeling Lamp 100W X 2  
Carry Bag X 1

### OK8U2

Orion 400 X 2  
Light Stand 198cm X 2  
Umbrella 85cm X 2  
Power Cord X 2  
Sync Cord X 1  
Standard Reflector X 2  
Modeling Lamp 100W X 2  
Carry Bag X 1



### OK4S2

Orion 200 X 2  
Light Stand 198cm X 2  
Speedring X 2  
Softbox 60cm X 85cm X 2  
Power Cord X 2  
Sync Cord X 1  
Protective Cap X 2  
Modeling Lamp 100W X 2  
Carry Bag X 1

### OK8S2

Orion 400 X 2  
Light Stand 198cm X 2  
Speedring X 2  
Softbox 60cm X 85cm X 2  
Power Cord X 2  
Sync Cord X 1  
Protective Cap X 2  
Modeling Lamp 100W X 2  
Carry Bag X 1

**Orion has the latest specifications and is available at an affordable price.**

Modern design constructed from durable red reinforced ABS to protect internal components and still remain extremely light weight and portable.

Orion flash is complete with an Aurora bayonet mount and is compatible with all Aurora accessories.

Model	Orion 200	Orion 400
Subject		
Power range Joule/Ws	3 ~ 200	12 ~ 400
Flash power variation	1/48~ Full	1/48~ Full
Power increment	1/10 f-stop	1/10 f-stop
Recharging time	0.1~1.2sec	0.1~1.4sec
Input voltage	AC 110V 50/60Hz or AC 220V 50/60Hz	
Safety fuse	10AT	
f-stop range, 2m, ISO 100, T=1/125	2.0-11.5 f-stop	2.88-16.8 f-stop
Flash duration at min T0.5	1/1,400sec	1/1,100sec
Flash duration at max T0.5	1/3,450 sec	1/2,540 sec
Voltage stabilization	± 0.1%	
Color temperature	5500±250°K	
Power display	Digital display screen	
Modeling lamp	100w~150w (E-11 or E-27)	
Modeling control	full/off/track	
Sync voltage	DC 5V	
Trigger	RF remote, Infrared remote, Synchro cord, Photo cell, Test button	
Dimensions	24x13.5x17cm	24x13.5x17cm
Weight	1.4kg	1.65kg
Housing	Reinforced polycarbonate	
Cooling fan	All models	
Overcharge indication	power display screen flickers	
Over temperature indication	Over temperature indicator flickers and alarm beeps	
Completed with	100w or 150w modeling lamp, power cord, synchro cord, reflector, spare fuse	



# DIGIS

D-400 / D-600 / D-800



CE RoHS



**Digis is extremely easy to operate with multiple functions offered on a feature packed unit with digital controls.**

Power output control is possible in 1/2 f-stop and 1/10 f-stop. Control in 1/10 f-stop when fine and precise power control is needed and in 1/2 f-stop when fast power adjustment is required.

Model	D-400	D-600	D-800
<b>Subject</b>			
Power range Joule/Ws	10 ~ 400	10 ~ 600	13 ~ 800
Flash power variation	1/48 ~ Full	1/64 ~ Full	1/64 ~ Full
Power increment	1/2 or 1/10 f-stop		
Recharging time	0.2-1.7sec	0.2-2.0sec	0.2-2.2sec
Input voltage	AC 120V 50/60Hz or AC 230V 50/60Hz		
Safety fuse	10AT		
f-stop range, 2m, ISO 100, T=1/125	2.83-16.8 s-top	2.86-22.6 f-stop	4-32 f-stop
Flash duration at minT0.5	1/780 sec	1/660 sec	1/580 sec
Flash duration at max T0.5	1/1,950 sec	1/1,750 sec	1/1,500 sec
Voltage stabilization	± 0.1%		
Color temperature	5500±100°K		
Power display	Digital display screen		
Modeling lamp	300W halogen lamp (GX 6.35)		
Modeling control	full/off/proportional/free		
Sync voltage	DC 5V		
Trigger	RF remote, Infrared remote, Synchro cord, Photo cell, Test button		
Dimensions	18X13X35cm	18X13X35cm	18X13X37cm
Weight	3.2kg	3.4kg	3.7kg
Housing	Die casted with Titanic Aluminum		
Plug-in flashtube	All models		
Cooling fan	All models		
Overcharge indication	power display screen flickers		
Over temperature indication	Over temperature indicator flickers and alarm beeps		
Completed with	300w modeling lamp, power cord, synchro cord, protective cap, spare fuse		



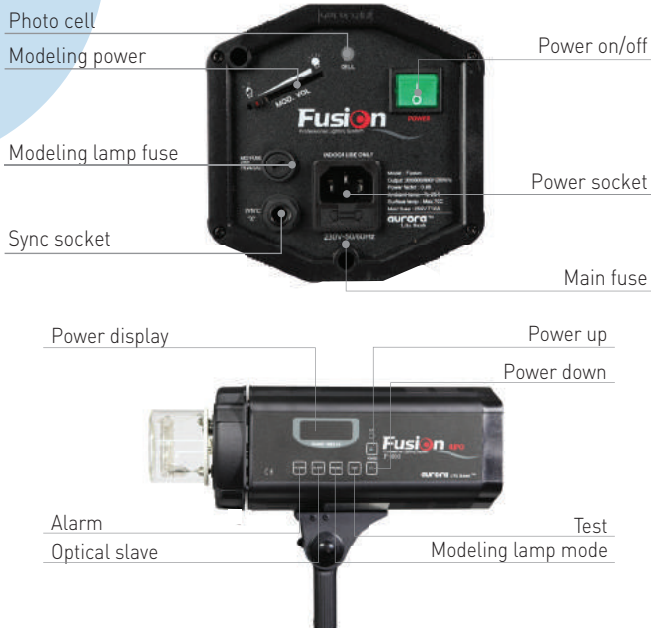
# FUSION

F-300 / F-600 / F-900 / F-1200



CE RoHS

**Fusion is the most powerful in the Aurora flash systems featuring constant color temperature over power variation.**



Model	F-300	F-600	F-900	F-1200
<b>Subject</b>				
Power range Joule/Ws	5~300	5~600	5~900	5~1200
Flash power variation	1/128 ~ Full	1/256 ~ Full	1/384 ~ Full	1/512 ~ Full
Power increment	16 steps	19 steps	21 steps	22 steps
Recharging time	0.2-1.2sec	0.2~1.4sec	0.2~2.2sec	0.2~2.8sec
Input voltage	AC 120V 50/60Hz or AC 230V 50/60Hz			
Safety fuse	10AT			
f-stop range, 2m, ISO 100, T=1/125	1.45-16.8 f-stop	1.45-22.6 f-stop	1.45-32.1 f-stop	1.45-32.6 f-stop
Flash duration at min T0.5	1/7,800 sec	1/7,800 sec	1/7,800 sec	1/7,800 sec
Flash duration at max T0.5	1/2,200 sec	1/1,750 sec	1/1,550 sec	1/1,250 sec
Voltage stabilization	± 0.1%			
Color temperature	5500±100°K			
Power display	Digital display screen			
Modeling lamp	300W halogen lamp (GX 6.35)			
Modeling control	full/off/proportional/free			
Sync voltage	DC 5V			
Trigger	RF remote, Infrared remote, Synchro cord, Photo cell, Test button			
Dimensions	18X13X36cm	18X13X36cm	18X13X42cm	18X13X46cm
Weight	3.0kg	3.2kg	4.2kg	4.6kg
Housing	Die casted with Titanic Aluminum			
Plug-in flashtube	All models			
Cooling fan	All models			
Overcharge indication	power display screen flickers and auto dumps			
Over temperature indication	Over temperature indicator flickers and alarm beeps			
Completed with	300w modeling lamp, power cord, synchro cord, protective cap, spare fuse			



© Kangshin Lee

## Boom Light

FBL-600, FBL-900, FBL-1200



Fusion boom light is a unique system which consists of a separate control unit and flash head. The control unit and flash head are connected with a cable so the photographer can place the flash head where he wants while controlling the power output from another position.



# GENESIS

G-400 / G-600 / G-800



CE RoHS

**The analogue controlled Genesis series of flash features variable flash output, removable flash tube, built-in cooling fan and a sensitive slave cell.**

The Genesis series of flash are manufactured with the operational needs of the photographer in mind, and will provide years of dependable service.

Model	G-400	G-600	G-800
<b>Subject</b>			
Power range Joule/Ws	400	600	800
Flash power variation	1/96 ~ Full	1/128 ~ Full	1/196 ~ Full
Power increment	power control knob		
Recharging time	0.1~1.4sec	0.1~2.0sec	0.1~1.4sec
Input voltage	AC 120V 50/60Hz or AC 230V 50/60Hz		
Safety fuse	10AT		
f-stop range, 2m, ISO 100, T=1/125	2.02-16.9 f-stop	2.02-22.5 f-stop	2.02-32.0 f-stop
f-stop range, 2m, ISO 100, T=1/125	16.9 f-stop	22.5 f-stop	32.0 f-stop
Flash duration at min T0.5	1/960 sec	1/567 sec	1/430 sec
Flash duration at max T0.5	1/2,250 sec	1/1,850 sec	1/1,400 sec
Voltage stabilization	± 0.1%		
Color temperature	5500±100°K		
Modeling lamp	150w halogen lamp (E-11 or E-27)		
Modeling control	full/off/track		
Sync voltage	DC 5V		
Trigger	RF remote, Infrared remote, Synchro cord, Photo cell, Test button		
Dimensions	18X13X33cm	18X13X37cm	18X13X37cm
Weight	3.0kg	3.2kg	3.4kg
Housing	Die casted with Titanic Aluminum		
Plug-in flashtube	All models		
Cooling fan	All models		
Over temperature indication	Alarm beeps		
Completed with	150w modeling lamp, power cord, synchro cord, protective cap, spare fuse		



**Customized kits are available to meet your specific need.**





# SUNLIGHT

SH-223 / SH-224



CE RoHS

**The Sun Light SH-223 and SH-224 provide an excellent solution for video and broadcast users enabling 'ease of use' adjustable continuous lighting. It is also loved by cosmetic industry due to warm color temperature and affordable price.**

They are especially useful for stills photographers wanting continuous lighting as well.

SH-223 features a GX9.5 1000W halogen lamp and the SH-224 a GX6.35 1000W halogen lamp. Being equipped with Aurora bayonet, all Aurora Lite Bank accessories from softbox to reflector are compatible.



## Photometric Data

Distance	Light Intensity (LUX)			Lamp Lifespan
	1m	2m	3m	
SH-223	6,425	1,745	827	240 hr
SH-224	13,251	3,843	1,620	15 hr

### Extra protection

Constructed from extruded aluminum case is for durability. Glassdome and protective cap are available options that ensures extra protection.



### Active cooling

Low noise cooling fan and air vent ensure safe use against high heat.

### Multipurpose standard reflector

Completed with standard reflector, Sun Light's versatility expands further with barndoors and umbrella.

### Easy to control

From off to full, controlling power output is easy with a dimmer on the control board.

### High light intensity and long lifespan

SH-224 features a high light intensity while SH-223 features a long lifespan of lamp.



# C LUX

Multi-application LED Light



CE RoHS



C[si:] LUX is a compact LED light with multiple mounting options.

Round and thin design allows a good fitting in your palm of hand. Built in cold shoe allows on camera mounting and 1/4" tap underneath cold shoe is for mounting to a tripod or light stand.

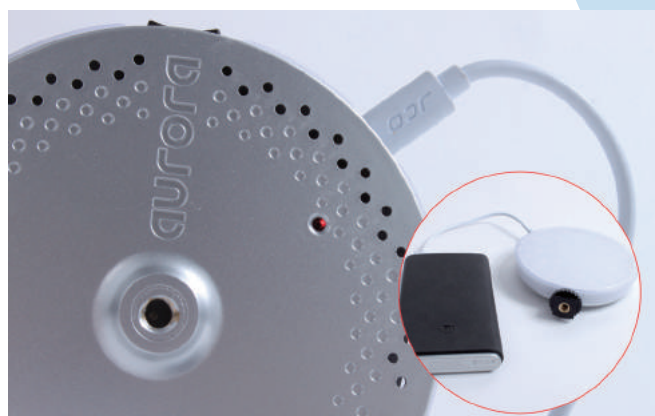
Specification			
Power consumption	10W		
CRI	95 or higher		
Color temp	5600°K		
Intensity (Lux)	0.3m	0.5m	1m
	3737Lux	1454Lux	414Lux
Power control	3 steps 0% 50%, 100%		
Beam angle	120°		
Battery capacity	3.7V 1000mAh LiPO x 2		
Recharging time From empty battery	1 hr 40 min		
Dimension	Ø 11cm x 2.45cm (H)		
Weight	0.15 kg		
In the box	C LUX led light, carry bag, 5-pin USB cable, shoe bracket		

## C LUX in combination with Firefly Beauty Box

will allow you to see how your flash is going to play and where shadows would fall and provides extra power to your flash light.

## Two internal Li-Po batteries

3.7V 1000mAh will allow 50 min of use at max power. Recharging from empty battery takes 1 hr and 40 min via USB with standard phone charger and shorter if quick charger is used. A 5-pin USB cable is included in the kit.





# LUMA 1000

# LUMA 500

AC/DC Portable LED Spot



CE RoHS



## Optimized for outdoor use

Electricity is not always available for location shootings and it is too much hassle to bring long extension cables and generators. Battery powered and portable to carry with Aurora LUMA Led lights are designed to solve these problems.

## Ideal for motion pictures

Low noise cooling creates perfect shooting condition for motion pictures. Durable and portable LUMA kit is easy to carry with, bright enough for shooting, and ensures excellent skin tone.

## High light intensity

Li-ion powered LUMA 1000 and LUMA 500 runs 80 minutes at max power and many more hours at lower powers and it is super bright using ever evolving high efficient LED chips. Portable LUMA delivers enough light output for outdoor as well as indoor shooting.

## Easy to use

Light intensity dims 0% to 100% through on board dimming knob continuously and battery charge level is indicated on board.

## Diffused light

Due to the built-in diffusion panel, direct light from LED sources gets diffused creating soft and shadow free output without light modifiers.

## Compatible with Aurora light modifiers

Equipped with Aurora bayonet, LUMA is compatible with all Aurora light modifiers. Especially portable Firefly for Aurora mount is recommended to use with.

## Photometric Data

Model\Distance	1m	2m	3m
LUMA 1000	7,018 lux	1,653 lux	714 lux
LUMA 500	3,746 lux	930 lux	404 lux

Light Head	LUMA 1000	LUMA 500
Power consumption	100W	50W
Color temperature	5600 ± 150K	
CRI	95 or higher	
Beam angle	60.1°	
Dimming	0 – 100%	
Dimension (cm)	17.7 (L)x12.5(W)x12.5(H)	
Cooling	Active, Low Noise	
Weight	2.25kg	1.98kg
Power input plug	4-pin XLR male	
Electrical option	LUMA AC Power Adapter LUMA Li-ion Battery 14.4V Camera Battery	

Li-ion Battery	LUMA 1000	LUMA 500
Battery capacity	14.4V 10.4Ah	14.4V 5.2Ah
Recharging time from empty battery	4 hrs	2 hrs
Running time	1 hr and 20 min at max power	
Dimension (cm)	10.5(W)x5.5(L)x20(H)	10.5(W)x5.5(L)x17(H)
Weight	1.15kg	
Power supply	Worldwide AC power supply	
Power output plug	4-pin XLR female	
Recharger	Universal battery charger included	

AC Power Adapter	LUMA 1000	LUMA 500
Power input	Multivoltage 100~240V	
Dimension (cm)	10.5(W)x5.5(L)x26(H)	10.5(W)x5.5(L)x20.5(H)
Weight	1.15kg	1.0kg

# BLP

BACK-LIT LED PANEL LIGHT



**Utilizing high quality and daylight balanced LED chips BLP ensures vivid and saturated color for true imaging.**

LED chips are placed in a constant distance throughout the back and light through front diffusion panel resulting in highly light intensity and yet soft and homogenous lighting.

Natural cooling ensures minimum noise. No UV, minimal heat, and flicker free lights please subjects and enables close shooting.

High color rendering index over 95Ra is a key feature of BLP system. No unpleasant color cast frees you from time consuming retouch work. Color temperature is preset at 5400°K for Day Light version and Tungsten color version is available at one's request.

Control unit can be either fixed on the back or wire connected for remote control. Simply slots in or out the control unit and fix it on the back or onto a wall as you wish. Dimming knob on the board dims from 100% to 50% with minimal color shift.



AC Power Inlet  
Dimming knob  
Power Switch

50cm dimmer cable  
(For remote control, up to 10m dimmer cable can be used.)

## Specifications

Model	Dimension (WxLxH, cm)	Weight	Power Consumption	CCT	CRI	Power Supply	
BLP612 Vertical	60x120x7	12kg	240W	5400 ± 150°K Day Light Version	95	90-264V AC	
BLP612 Horizontal	120x60x7						
BLP312 Vertical	30x120x7	10.5kg	150W	3200 ± 150°K Tungsten Version			
BLP312 Horizontal	120x30x7						
BLP66	60x60x7	10kg	150W				
BLP36 Vertical	30x60x7	7kg	60W				
BLP36 Horizontal	60x30x7						

## Photometric Data

Distance		1.2m	2.1m	3m	Beam Angle
BLP612	LUX	4,190.47	1,368.32	670.47	107.7°
	FOOT CANDLE	389.31	127.12	62.29	
BLP312	LUX	2,539.79	829.32	406.37	111.0°
	FOOT CANDLE	235.95	77.05	37.75	
BLP66	LUX	2,636.06	860.76	421.77	111.0°
	FOOT CANDLE	244.90	79.97	39.18	
BLP36	LUX	913.18	298.18	146.11	111.3°
	FOOT CANDLE	84.84	27.70	13.57	



# 1000F

FLOOD LED LIGHT



CE RoHS

## Specifications

Power Consumption	150W
Color Temperature	5600°K _Day Light Version 3200°K _Tungsten Version
Beam Angle	109.8°
Color Rendition	95
Dimming_ Photo Version	20-100% Control via dimmer on board
Dimming_ Broadcast Version	0-100% Control via 5-pin DMX or soft buttons on board
Dimension (cm)	54.7(L) x 29.7(H) x 15.1(W)
Weight	9kg
Power Supply	110 – 230V AC

## Photometric Data

Distance	1m	2m	3m
LUX	3,400	722	321
FOOTCANDLE	316	67	30



### HIGH COLOR RENDITION INDEX (CRI>95Ra)

Strong green cast is often observed with the LED lights in the market that result in greenish photos. Retouch to correct unpleasant color cast is time consuming and labor intensive work which the photographer would like to avoid.

Thus it is essential to have CRI over 90Ra and Aurora 1000F features CRI of 95Ra. Color temperature is available either at 5600°K or 3200°K prefixed from factory.

### CUT, SHAPE, TILT, AND PAN

4-way barndoor comes equipped with the lighting unit and a slot for gel-frame insertion is placed in front. Cut and shape the light as you wish. Front screen diffuses harsh light and throws soft and yet bright light.

Instead of multi shades observed with other LED lights in the market, Aurora LED light features a single shade for perfect light modify. Pole-operated yoke enables tilting and panning of the light at great ease.

### BROAD DIMMING RANGE

1000F broadcast version dims from 0% to 100%. Soft touch buttons on board enable full power control as well as DMX channel setting connected to a DMX control unit. Integrated 5-pin DMX in and out ports are for full DMX control.

1000F photo version dims from 20% to 100%. Dimmer knob on board allows one to control power with great accuracy featuring smooth and gradual increase and decrease.





# SOFTBOX

Aurora softboxes soften light by reflecting it over the unique textured internal surfaces, through an internal baffle and then through a front diffuser giving soft shadow free lighting. Rotating aluminum speedring allows both vertical and horizontal shooting positions. Each softbox is supplied in a carrying case.





# QLOCK SYSTEM



Aurora universal speedring known as USR3 incorporates into different shapes of Aurora softbox square, rectangular, strip and octagon featuring 360° free rotation, durable design, and easy to recognize marks, and interchangeable adapter rings.

In addition to these features, the new Q Lock system allows easy set up and collapse. Firefly XL, Firefly Par, and Firefly Beauty Box are designed utilizing umbrella mechanism while Q Lock is an innovative system with easy locking receptacles.

Metal rod tends to stay straight but to set up a softbox, it has to be bent pressing down the top bit with one's thumb and lifting up the grabbed part. Stronger and longer rod is used for bigger softbox and set up becomes harder.

**Qlock comes completed with a softbox while inner adapter ring is user replaceable. Number of receptacles would vary 4 to 16 depending on the number of softbox sides. Qlock with 4 receptacles is for recta and square, 8 for octa and 16 for hexadecagon. For strip softbox, 4 receptacles are slightly in different position from recta and square.**



**QLOCK RECTA**



**QLOCK STRIP**

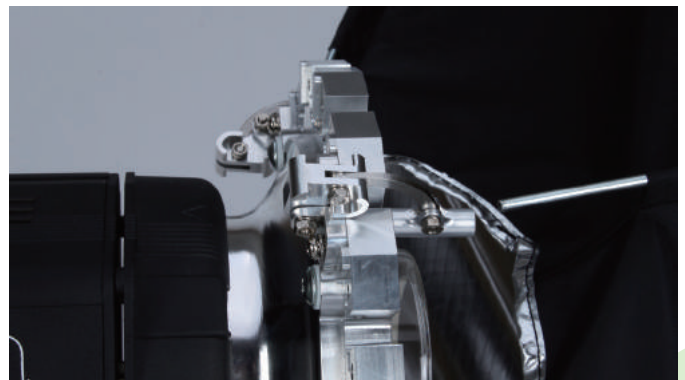


**QLOCK OCTA**



**QLOCK HEXADECA**

Each receptacle locks and holds a metal rod. Locking can be done easily by pressing down the hasp and pushing it back will release the hasp. Once one receptacle with rod collapses, symmetry with high tension is broken and it makes entire collapse procedure much easier.



# TERA SOFTBOX



**16 sided in parabolic shape, Tera and Tera-D softbox deliver unique light quality that the broad wrap-around light is a simply perfect solution for commercial advertising, weddings, fashion and portrait.**

Front diffuser is made of one full sheet of fabric without needle work and inner diffuser is double layered with one circular deflector which designed to eliminate hot spot. Silver embossed interior linings that are highly reflective and heat resistant create pleasing light sources. Rear cover can be removed for ventilation when used with hot light. It also makes assembly and disassembly easy. Three different systems for connecting TERA softbox and flash head are offered; SRTS speeding, SRTB speeding with bracket, and Bounce N Focus indirect mounting system. Users may choose one out of three suits best for their need.

Heavy duty speeding SRTB is equipped with tilting bracket to sustain the weight of Tera softbox firm. SRTS speeding is compact and light weighted and it is easy to assemble with TERA softbox.

Model	Diameter	Depth	Weight	Speed Ring	BounceNFocus
TERA-D 35	90cm [35"]	65cm [26"]	2.4kg	SRTS or SRTB	Medium
TERA-D 47	120cm [47"]	71cm [28"]	2.8kg	SRTS or SRTB	Medium
TERA-D 59	150cm [59"]	104cm [41"]	3kg	SRTB	Medium
TERA-D 76	198cm [78"]	120cm [47"]	4kg	SRTB	Large
TERA 75	190cm [75"]	65cm [26"]	2.5kg	SRTB	Medium
TERA 100	253cm [100"]	70cm [28"]	3.8kg	SRTB	Medium



# BOUNCE N FOCUS

By changing position of light from direct to indirect and by adjusting focus of light through center pole, Bounce N Focus brings more versatility to your lighting system.

Indirect fitting of light head creates beautifully bounced light. With center focus pole pushed in or pulled out, the photographer can enjoy a different level of light intensity as well as light spread.

With light head mounted to Bounce N Focus connected with Aurora softbox, light hits to lining of softbox swirling around and bounces back to front. Reflection of indirect positioned light is softer than the other.

Model	Description	Pole Length	Weight
BPM	Bounce N Focus Medium	98cm (38.5")	2.4kg
BPL	Bounce N Focus Large	120cm (47.0")	2.6kg

**Focused in position** creates reflection concentrated in the center of softbox.

**In the mid position**, light reflection fills in most part of softbox so creates the softest light of all.

**In the extended position**, light reflection is around the frontal edge of softbox creating rim light.



## Adaptor Ring for Bounce N Focus

Interchangeable mount ring system is included in the package and also offered separately.



### AFBP

- For Bron Pulso
- Inner Dia : ø7.54cm



### AFPF

- For Profoto
- Inner Dia : ø10.4cm



### AFHE

- For Hensel Expert
- Inner Dia : ø9.5cm



### AFBA

- For Balcar
- Inner Dia : ø8.90cm



### AFEC

- For Elinchrom
- Inner Dia : ø11.61cm



### AFBW

- For Aurora/bowens
- Inner Dia : ø9.14cm



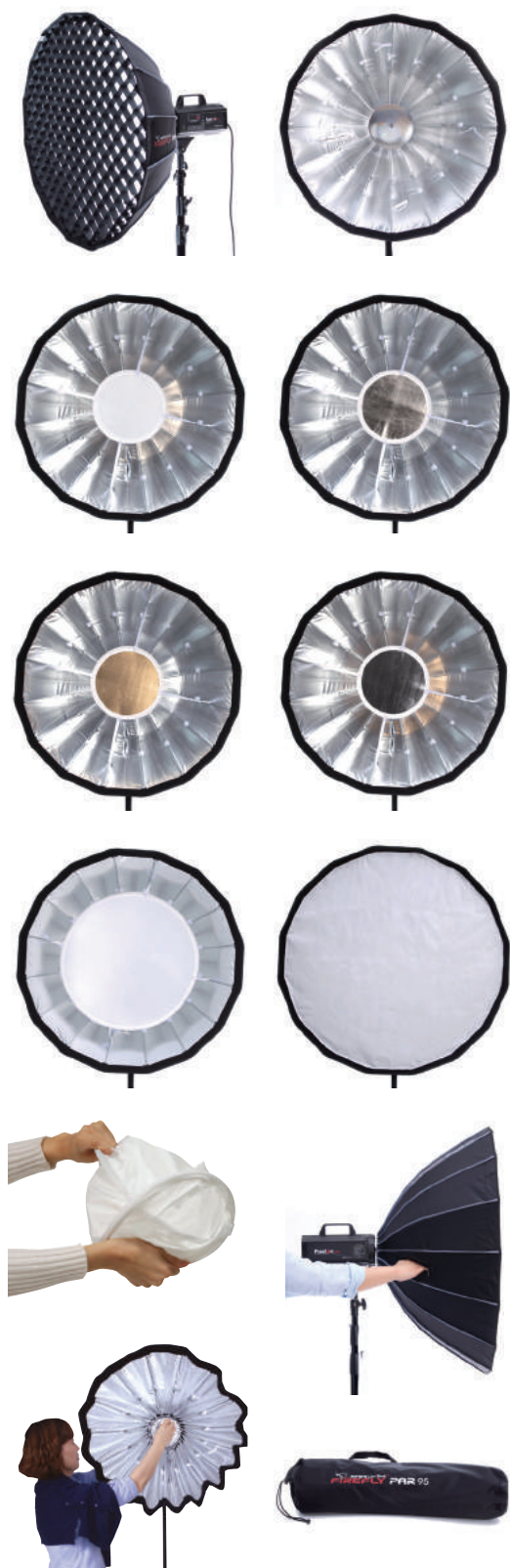
### AFMP

- For Multiblitz
- Inner Dia : ø8.3cm

## Light Comparison



# FIREFLY PAR



## Firefly Par uses the patent pending umbrella mechanism which allows instant set up and collapse

Very close to circle, 16 sided Firefly Par creates a round eye catch and with flattered back, it provides a dramatic look close to classic beauty dish. More parabolic and deeper than conventional octa softbox and Firefly XL, it wraps around your subject with nicely diffused light.

Inner diffuser is a circular disc made with Aurora standard diffusing material. It alone is a good light diffusing disc when handheld or with a disc holder. Optional bounce disc is available in two different colors; silver/gold and softgold/white and it also twist folds just like conventional reflector.

- Collapsible, light weight and portable
- Patent pending umbrella mechanism for instant set up and collapse
- Twist foldable Inner diffuser disc
- Optional two-sided bounce discs which twist fold like classic reflector
- Optional silver metal deflector
- Zipper opening for instant access to umbrella lock without removing diffusers
- Parabolic design for wrapping around lighting
- Two sizes are offered to begin with ø85 cm and ø95 cm
- Completed with adaptor ring for major brands such as Profoto, Elinchrom, Broncolor, Bowens, Hensel, Multiblitz, and Balcar.

Model	Interior	Design	Size	Depth	Weight
FPO 85	Silver	Hexadecagon	ø85cm(33.5")	37cm(14.5")	1.4kg
FPO 95	Silver	Hexadecagon	ø95cm(37.4")	42cm(16.5")	1.5kg

## Optional accessory

Model	Description	Weight
BDC 30 S/G	Bounce Disc ø30cm, Silver/Gold	0.1kg
BDC 30 SG/W	Bounce Disc ø30cm, Softgold/White	0.1kg
DFS 20	Metal Deflector ø20cm (8"), Silver	0.2kg
LUVT 85	Softgrid for FPO 85, ø85cm (33")	0.10kg
LUVT 95	Softgrid for FPO 95, ø95cm (37")	0.15kg





## Firefly XL has optional accessories that can deliver various light effects for multi-purpose.

DFS20, silver deflector bounces back the lights eliminating hot spot and even reflection. CLUX, portable LED can deliver extra light.

Strip mask and soft grids are also available for Firefly XL. If you have strip mask and soft grids for Aurora Softbox, they are compatible with Firefly XL as well.

Inner diffuser and outer diffuser are included in the Firefly XL. With the diffusers attached, the swirled around lights from silver lining get diffused through creating soft and even lights.

The umbrella mechanism makes setting and packing very easy. A zipper opening is positioned near to the adaptor ring. One can push in his hand and pull out the runner for pack up.

Equipped with a built-in speedring, Firefly XL allows immediate shooting saving time to assemble softbox with speedring. FXL is available with the most popular light heads out in the market; Aurora/Bowens, Hensel, Profoto, Multiblitz, Broncolor, and Balcar.

Model	Interior	Design	Size	Depth	Weight
FXL 65S	Silver	Octagon	Ø 65cm [26"]	31cm [12"]	0.8kg
FXL 90S	Silver	Octagon	Ø 90cm [35"]	45cm [18"]	1.1kg
FXL 120S	Silver	Octagon	Ø 120cm [47"]	58cm [23"]	1.5kg
FXL 36S	Silver	Strip	30x60cm [12x24"]	30cm [12"]	0.6kg
FXL 66S	Silver	Square	60x60cm [24x24"]	39cm [15"]	1.0kg
FXL 68S	Silver	Rectangular	60x80cm [24x32"]	40cm [16"]	1.0kg



- Collapsible, light weight and portable
- Patent pending umbrella mechanism for instant set up and collapse
- Zipper opening for instant access to umbrella lock without removing diffusers
- Six sizes are offered both in octa and recta shape
- Completed with adaptor ring for major brands
- Optional silver metal deflector and Portable LED



©Clément Tardif

# SOFTBOX

## RECTA



The classic shape and 2:3 lighting ratio make rectangular softboxes the most sought after by today's creative photographers.

### Recess type

Model	Interior	Size	Depth	Weight
LBDR 1420S	Silver	140x200cm[55x79"]	61cm[24"]	2.2kg
LBDR 1218S	Silver	120x180cm[47x71"]	58cm[23"]	1.8kg
LBDR 1014S	Silver	100x140cm[39x55"]	58cm[23"]	1.5kg
LBDR 912S	Silver	90x120cm[35x47"]	49cm[17"]	1.3kg
LBDR 715S	Silver	70x150cm[28x59"]	51cm[19"]	1.3kg
LBDR 810S	Silver	80x100cm[31x39"]	38cm[15"]	1.0kg
LBDR 68S	Silver	60x80cm[24x32"]	39cm[15"]	0.6kg

## SQUARE



With 1:1 lighting ratio, square boxes are most often used as fill lights calling for a broad, even light source.

### Recess type

Model	Interior	Size	Depth	Weight
LBDR 1010S	Silver	100x100cm[40x40"]	48cm[19"]	1.2kg
LBDR 88S	Silver	80x80cm[32x32"]	46cm[18"]	1.0kg
LBDR 66S	Silver	60x60cm[24x24"]	36cm[14"]	0.5kg
LBDR 45S	Silver	45x45cm[18x18"]	27cm[11"]	0.4kg

## OCTA



A good choice for portrait work! These unique 8 sided, softboxes creates a beautiful, natural catch lights in the subject's eyes.

### Recess type

Model	Interior	Size	Depth	Weight
LBOR 213S	Silver	ø213cm[84"]	60cm[24"]	2.4kg
LBOR 150S	Silver	ø150cm[59"]	41cm[16"]	1.7kg
LBOR 120S	Silver	ø120cm[47"]	49cm[19"]	1.4kg
LBOR 90S	Silver	ø90cm[35"]	41cm[16"]	1.1kg
LBOR 60S	Silver	ø60cm[24"]	36cm[14"]	0.6kg

## STRIP



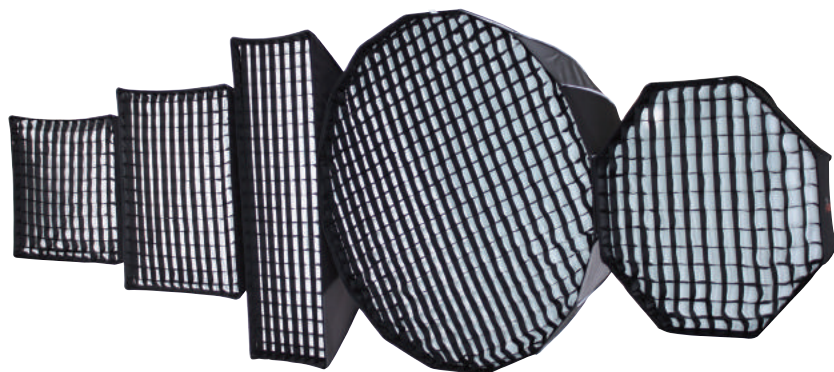
The long and narrow form of this type of light source makes it very useful in crucial lighting situations.

### Recess type

Model	Interior	Size	Depth	Weight
LBDR 612S	Silver	60x120cm[24x47"]	34cm[13"]	1.2kg
LBDR 418S	Silver	40x180cm[16x71"]	49cm[19"]	1.2kg
LBDR 412S	Silver	40x120cm[16x47"]	41cm[16"]	1.0kg
LBDR 318S	Silver	30x180cm[12x71"]	44cm[17"]	1.0kg
LBDR 312S	Silver	30x120cm[12x47"]	41cm[16"]	0.9kg
LBDR 39S	Silver	30x90cm[12x35"]	32cm[13"]	0.6kg
LBDR 36S	Silver	30x60cm[12x24"]	25cm[10"]	0.5kg



# LOUVER



**Louver directs light onto the subject and maintains light quality while reducing light onto the background.**

It attaches easily with heavy duty Velcro and is suitable for use with recessed softbox. Each cell is in the dimension of 5cm x 5cm x 3cm and all the louvers we offer are 40 degree.

## Strip

Model	Size	Weight	Compatible softbox
LUV 36	30x60cm (12x24")	0.05kg	LBDR 36
LUV 39	30x90cm (12x36")	0.07kg	LBDR 39
LUV 312	30x120cm (12x47")	0.10kg	LBDR 312
LUV 412	40x120cm (16x47")	0.11kg	LBDR 412
LUV 318	30x180cm (12x72")	0.13kg	LBDR 318
LUV 418	40x180cm (16x72")	0.16kg	LBDR 418

## Recta

Model	Size	Weight	Compatible softbox
LUV 45	45x45cm (18x18")	0.05kg	LBDR 45
LUV 55	50x50cm (20x20")	0.06kg	FBS2 55
LUV 66	60x60cm (24x24")	0.08kg	LBDR 66, FXL 66
LUV 68	60x80cm (24x31")	0.10kg	LBDR 68, FXL 68
LUV 612	60x120cm (24x47")	0.14kg	LBDR 612
LUV 810	80x100cm (31x39")	0.16kg	LBDR 810
LUV 912	90x120cm (36x47")	0.20kg	LBDR 912
LUV 1010	100x100cm (39x39")	0.19kg	LBDR 1010
LUV 1014	100x140cm (39x56")	0.25kg	LBDR 1014
LUV 1218	120x180cm (47x72")	0.36kg	LBDR 1218
LUV 4511	45x110cm (18x43")	0.11kg	LBUR 4511

## Octa

Model	Size	Weight	Compatible softbox
LUV 60	ø60cm (24")	0.16kg	LBOR 60
LUV 65	ø65cm (26")	0.17kg	FXL 65
LUV 75	ø75cm (30")	0.18kg	FDO 75
LUV 90	ø90cm (36")	0.20kg	LBOR 90
LUV 120	ø120cm (47")	0.25kg	LBOR 120
LUV 150	ø150cm (59")	0.29kg	LBOR 150

## Hexadecagon

Model	Size	Weight	Compatible softbox
LUV 85	ø85cm (33")	0.10kg	FPO 85
LUV 95	ø95cm (37")	0.15kg	FPO 95
LUV 90	ø90cm (35")	0.12kg	TERAD 35
LUV 120	ø120cm (47")	0.19kg	TERAD 47
LUV 150	ø150cm (59")	0.28kg	TERAD 59

# VIDEO PLUS



**Aurora's new Video Plus softbox is an innovative upgrade from Video softbox line in durability and compatibility with industry standard accessories. All the materials are carefully chosen to be used with high heat continuous lights without burning or discoloring.**



## Heat resistant material

Three unique fabrics are newly used. Firstly, highly heat resistant black/silver material is used for collar which is usually exposed to high heat from light source. Secondly, diffusing material used for inner baffle is resistant against heat that no discoloring is observed after a long exposure to high heat. Lastly, Velcro used around collar and inner baffle resists high heat.

## Leather protected rod pocket

All four corner pockets are protected with durable leather so that metal rods would not outshoot through pockets.

## Three kinds of front diffuser included

Not only full stop screen but also 1/4 stop and 1/2 stop screens are included.

## Softgrid 40°

Industry standard 40 degree softgrids are available for full range of Video Plus softbox line.



## Specifications

Model	Front size	Depth	Grid
VPIA 34	30x40cm	25cm	LUV 34
VPIA 45	40x55cm	30cm	LUV 45
VPIA 68	60x80cm	45cm	LUV 68
VPIA 912	90x120cm	60cm	LUV 912
VPIA 1318	135x180cm	120cm	LUV 1318



# SOFTBOX FOR LED PANEL

## Softbox for LED Panel



**Aurora softbox for SkyPanel features light weight and portable design. It folds down flat to 1/2 of its size and comes with a carrying bag for easy transport and carry.**

Direct mount to SkyPanel is quick and easy to set up and sewing work and material are the best quality just like other Aurora softboxes.

1/4 stop grid front diffuser which delivers evenly diffused light is included in the package and 40° softgrid is offered as optional accessory.

### Recess type / Silver interior

Model	Front Diffuser	Size	Depth	Weight	Use with
VARs 30	1/4 stop grid	60x60cm[24x24"]	25 cm	460 g	ARRI S30
VARs 60	1/4 stop grid	60x90cm[24x36"]	26 cm	560 g	ARRI S60

## Speedring for Continuous Light



### SRJU130

Inner ø13cm  
Junior 300W  
Joker 200W  
Bambino 200/250W

Compatible with Video Plus



### SRJU165

Inner ø16.8cm  
Junior 650W  
Joker 400W  
Bambino 650W

Compatible with Video Plus



### SRJU185

Inner ø18.5cm  
Arrilite 650/800/1000W  
Bambino 1000W

Compatible with Video Plus



### SRJU195

Inner ø19.7cm  
Junior 1K  
Joker 800W

Compatible with Video Plus



### SRJIA245

Inner ø24.5cm  
Fresnel 2K  
Studio Fresnel 1K  
Compact HMI 1200W



### SRJIA345

Inner ø34.5cm  
Junior 5K  
Bambino 5K



### SRIA

Inner ø16.5cm  
Varibeam 800/1000W  
Redhead 800/1000W

Compatible with Video Plus

# SPEEDRING ADAPTER

## Speedring for Flash Light

Made from cast aluminum, Aurora speedrings are durable and heat-resistant. They are suitable for square, rectangular, strip, and octa softboxes and available for most major brands flash heads. 360° free rotation enables perfect lighting angle.

	<b>SRHM</b> • For Hensel(Mono) • Inner Dia : 15.42cm		<b>SRHE</b> • For Hensel(Expert) • Inner Dia : 9.50cm
	<b>SRBP</b> • Broncolor(Pulso) • Dia : 8.00cm		<b>SRBI</b> • Broncolor(Impact) • Inner Dia : 7.10cm
	<b>SRMP</b> • Multiblitz (Profilux ) • Inner Dia : 7.53cm		<b>SRMV</b> • Multiblitz (Varilux ) • Inner Dia : 10.21cm
	<b>SRWL</b> • For White Lightning • Inner Dia : 8.9cm		<b>SREC</b> • For Elinchrom • Inner Dia : 11.61cm
	<b>SRPG</b> • For Photogenic • Inner Dia : 9.32cm		<b>SRPF</b> • For Profoto • Inner Dia : 10.40cm
	<b>SRBW</b> • Aurora / Bowens • Inner Dia : 9.14cm		<b>SRNV2</b> • For Novatron2 • Inner Dia : 9.52cm

Model	Description	Inner Dia(cm)
SRNM	Noman	10.13
SRCA	Comet A	9.08
SRPA	Propet A	9.00
SRPB	Propet B	9.84
SRBA	Balcar	8.90
SRST	Speedotron	10.17
SRCN	Courtenay	13.79
SRD2	Dyna Light 2	13.00
SRJL	Joker Light	9.70
SRJT	JTL	7.62
SRTK	Tokina	9.60
SRPT	Photona	8.74
SRLU	Lumedyne	3.55
SRNH	Novatron	16.94
SRAC2	Camray	8.50
SRET	Electra	15.25
SRMF	Multi flex	8.95
SRES	Electra(small)	12.24

## Adapter for Firefly XL and Firefly Par

While Firefly XL and Firefly Par come completed with adapter ring for a designated bayonet, it is also possible to replace an adapter ring for another bayonet.

			
<b>IFBW</b> • For Aurora/Bowens • Inner Dia : 9.14cm	<b>IFBP</b> • For Bron Pulso • Inner Dia : 7.54cm	<b>SRBW</b> • For Profoto • Inner Dia : 10.4cm	<b>SRBW</b> • For Elinchrom • Inner Dia : 11.61cm

Model	Description	Inner Dia(cm)
IFBA	Balcar/Alien Bees	8.71
IFHE	Hensel EH	9.5
IFMP	Multiblitz	7.53

## SRSB Speedring for Speedlight



Aurora softbox delivers the photographer soft and even lights.

SRSB enables the photographer to use any shape of Aurora softbox with up to two speedlights.

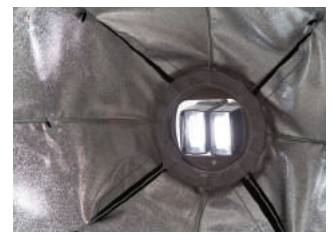
Adding metal blocker inside speedring, light spill is minimized. Length and height adjustable bracket makes major brand speedlights adaptable. 360° free rotation is easy to perform with.



# FIREFLY DUET



**Incorporating SRSB into Firefly umbrella mechanism, Firefly Duet is easy to set up and pack up and it is designed to use up to two speedlights.**



## Use up to two speedlights

Use one light mounting on stand bracket. If more power is required, use two lights mounting on extended bracket.

## Minimal light spill

Back skirt with toggle lock minimizes light spill making Firefly Duet truly universal for speedlight usage.

## Optional deflector and soft grid

Beauty dish deflector mounted onto the center pole of Firefly Duet. Integrating coin slot screw, assembly and disassembly are easy and quick. With deflector mounted on, Firefly Duet provides a more dramatic look in which stronger shadows.

With option soft grids, Firefly Duet creates more directional light enables the photographer to control spilling stray lighting onto the background.

Model	Interior	Size	Depth	Weight
FDO 75	Silver	ø75cm (30")	40cm	1.34kg

## Optional Accessory

Model	Description	Size	Weight
DFS 15	Metal deflector, silver	ø15cm(6")	0.1kg
LUV0 75	Softgrid, Cell 5x5x3cm	ø75cm(30")	0.18kg

# FIREFLY BEAUTY BOX II

## FIREFLY PAR 65



**With an optional deflector mounted on the centre pole, Firefly II and Firefly Par turn into a beauty dish instantly and create a nice round catch light in the subject's eyes.**

In addition, the photographer can put a diffuser on to create a much more diffused light and softer shadows. Firefly II and Firefly Par 65S are foldable. Durable, metal frame is carefully designed for shoe mounted flash. Being portable and light weight, both are recommended for both indoor and outdoor portrait photography. The embossed lining of the centre deflector creates even reflection which eliminates the potential for a hot spot.

Model	Description	Size	Depth	Weight
<b>FP0 65S</b>	<b>Hexadecagon, Silver interior</b>	<b>ø65cm(26")</b>	<b>25cm(10")</b>	<b>1.8kg</b>
FB02 65	Octagon, silver interior	ø65cm(26")	25cm(10")	1.15kg
FB02 50	Octagon, silver interior	ø50cm(20")	17cm(7")	1kg
FBS2 2560	Strip, silver interior	25x60cm(10x24")	24cm(9")	1.06kg
FBS2 55	Square, silver interior	50x50cm(20x20")	21cm(8")	1kg

### Optional Accessory

Model	Description	Use with	Size	Weight
DFS 15	Metal deflector, silver	Firefly II & Firefly Par	ø15cm(6")	0.1kg
LUV 55	Softgrid, 40°	FBS2 55	50x50cm(20x20")	50g

**Firefly Par 65 is 16 sided and completed with a stand bracket mounted with a cold shoe.**





# MICROBOX PORTAFLEX



© Guido Puttkammer

## Easy to use

Microbox and Portaflex attach to the front of shoe-mounted flash units. To use the Microbox just slide it over the front of the flash head onto the touch-fastener strap or tabs and you're ready to go. Portaflex mounting is just as easy; just use the touch-fastener strap, then press on to secure to speedlight

## Easy to store

Microbox and Portaflex fold flat for easy storage.

## Dramatic lighting effects

With Microbox attached a more diffused lighting is achieved reducing hot spots and softening shadows. The Portaflex snoot lets you target light to specific areas of portraits to add dramatic lighting effects. The white lining of the Portaflex produces a soft and diffused light.

## Microbox



**MAS**  
Size 20x28cm  
Interior silver



**MBS**  
Size 15x20cm  
Interior white



**MOS**  
Size ø20cm  
Interior silver



**MSS**  
Size 9x12cm  
Interior white

## Portaflex



**QBR-B (Bendable)**  
Size 13x17cm  
Interior black/white



**SBF-B (Bendable)**  
Size 19x25cm  
Interior black/silver



**QBF-B (Bendable)**  
Size 20x27cm  
Interior black/white



**SNS**  
Size ø5cm  
Interior black/white

## Multiflector

4-in-1 panel is interchangeable for different color and creates silver, gold, white and black reflection. Multiflector increases contrast and control the direction of your light.



Size 22x29cm  
Interior 4-in-1

### No reflection



### Silver reflection



### White reflection



# STRIP BOUNCE



**Simple two step actions are everything you need to set up Strip Bounce. Roll up around a speed light and secure attachment of Velcro loop and hook.**

**Silver lining is embossing textured for even reflection.**

## Specifications

Model	SB 35	SB 50
Dimension (cm)	25.5 x 48	25.5 x 63
Size of Diffusing Panel (cm)	8 x 35	8 x 50
Weight	0.16kg	0.18kg
Carrying Bag (cm)	15 x 18	15 x 18

Diffusing material eliminates hot spot and spreads out light top to bottom evenly. Transparent diffusing material is sewn inside and non slippery lining is used to hold speed light head firmly. No matter of strong wind, Strip Bounce stands still without sagging.

Portable and light weight strip softbox are truly multiple. Strip Bounce can be used both on camera and off camera, horizontally or vertically, one light or two or multiple lights.

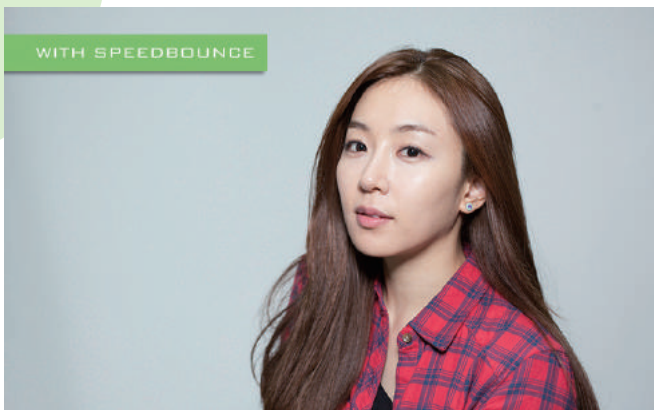




# SPEED BOUNCE



Speed Bounce delivers soft and even light to your subject eliminating high light and shadows without losing out exposure. Flat image catching all the details of your subject is what you get with Speed Bounce.



Speed Bounce is offered in two different sizes; 30cm diameter and 40cm diameter. Both are ideal size for portrait shooting indoor as well as outdoor. The way it is designed is the same with conventional softbox in terms of lighting effect. Back and column are made with black/silver material for reflection and front diffuser is made with Aurora standard diffusing material for soft and even lighting. Its unique circular shape creates a round eye catch creating a lively look on the subject. Much shallower than conventional light, contrast is higher and yet it is as soft as conventional light.



# ACCESSORY

Ergonomic light modifiers from Aurora ensure easy and comfortable shooting set up meeting excellent light quality. Reflection, diffusion, focusing, cutting, and shaping are easy to perform with Aurora light modifiers.





# UMBRELLA

**Aurora umbrellas are made with a specially treated material that enables a soft and diffused light. They are manufactured with high quality frames and fabric for long term durability and are designed for professional use.**

## Umbrella

The parabolic umbrellas are much deeper than standard umbrellas that allow the photographer more precise control over light spread. By pushing in or out of the umbrella shaft, the photographer can convert focused light to wide spread light simply.



### U-135 Deep

Color	Size	Depth	Weight
White	Ø135cm(53")	47cm(18")	1kg
Translucent	Ø135cm(53")	47cm(18")	0.92kg
Silver	Ø135cm(53")	47cm(18")	0.96kg



### U-160 Deep

Color	Size	Depth	Weight
White	Ø160cm(65")	64cm(25")	1.29kg
Translucent	Ø160cm(65")	64cm(25")	1.19kg
Silver	Ø160cm(65")	64cm(25")	1.22kg

### White Umbrella



	U-65A	U-85A	U-105A	U-130A	U-155A
Size	ø 65cm (26")	ø 85cm (33")	ø 105cm (42")	ø 130cm (52")	ø 155cm (61")
Weight	0.25kg	0.30kg	0.40kg	0.70kg	0.80kg

### Translucent Umbrella



	U-65B	U-85B	U-105B	U-130B	U-155B
Size	ø 65cm (26")	ø 85cm (33")	ø 105cm (42")	ø 130cm (52")	ø 155cm (61")
Weight	0.25kg	0.30kg	0.40kg	0.70kg	0.80kg

### Silver Umbrella



	U-65C	U-85C	U-105C	U-130C	U-155C
Size	ø 65cm (26")	ø 85cm (33")	ø 105cm (42")	ø 130cm (52")	ø 155cm (61")
Weight	0.25kg	0.30kg	0.40kg	0.70kg	0.70kg

## Umbrella Cover

An optional umbrella cover turns the umbrella into an affordable and portable softbox. Diffusion cover is to be used with silver and white reflection umbrella and Reflection cover is to be used with shoot through umbrella.



Diffusion Cover	UD-85	UD-105	UD-130	UD-155
Reflection Cover	UD-85B	UD-105B	UD-130B	UD-155B
Size	Ø85cm(33")	Ø105cm(42")	Ø130cm(52")	Ø155cm(61")
weight	0.04kg	0.05kg	0.07kg	0.08kg



# REFLECTOR

## Lite Panel

**Each Lite Panel set comes complete with reflector, supporting rods, ball head adapter and stand with a max height of 160cm. The ball head adapter allows for free and easy rotation of the panel.**

Assembly is achieved by inserting the supporting rods into the ball head adapter and four corners of the fabric panel. Optional reflector panels are available separately in 6 different color combinations; silver/black, silver/white, black/white, silver/gold, silvergold/white and translucent.



	LP88 set
Size	80x80cm (32x32")
Weight	2.38kg
Color	<ul style="list-style-type: none"> <li>• Silver/Black</li> <li>• Silver/White</li> <li>• Black/White</li> <li>• Silver/Gold</li> <li>• Softgold/White</li> <li>• Translucent</li> </ul>



	LP 812 set
Size	80x120cm (32x48")
Weight	2.42kg
Color	<ul style="list-style-type: none"> <li>• Silver/Black</li> <li>• Silver/White</li> <li>• Black/White</li> <li>• Silver/Gold</li> <li>• Softgold/White</li> <li>• Translucent</li> </ul>



	LP1018 set
Size	100x180cm (40x72")
Weight	2.62kg
Color	<ul style="list-style-type: none"> <li>• Silver/Black</li> <li>• Silver/White</li> <li>• Black/White</li> <li>• Silver/Gold</li> <li>• Softgold/White</li> <li>• Translucent</li> </ul>



	LP1022 set
Size	100x220cm (40x86")
Weight	2.68kg
Color	<ul style="list-style-type: none"> <li>• Silver/Black</li> <li>• Silver/White</li> <li>• Black/White</li> <li>• Silver/Gold</li> <li>• Softgold/White</li> <li>• Translucent</li> </ul>

## Lite Disc

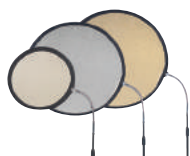
**LD**



With a simple twist, they fold to one-third their open size. Each reflector is made with a double riveted steel band to ensure years of trouble-free use and comes with a zippered carrying pouch.

	LD30	LD60	LD80	LD100	LD120
Size	ø30cm (12")	ø60cm (24")	ø80cm (32")	ø100cm (39")	ø120cm (47")
Weight	0.1Kg	0.15Kg	0.2Kg	0.4Kg	0.6Kg
Color	• Silver/White	• Silver/Gold	• Softgold/White	• Black/White	

**HL**



HL has a gooseneck that is designed to fit onto the HSS 2 stand; fully adjustable gooseneck bends, rotates and stays in place

	HL45 set	HL60 set	HL80 set	
Size	ø45cm (18")	ø60cm (24")	ø80cm (32")	
Weight	2.28Kg	2.28Kg	2.3Kg	
Color	• Silver/White	• Silver/Gold	• Softgold/White	• Black/White

**LDM**



Multi Disc features five surfaces in one disc : silver/gold, black/white and translucent, this makes them extremely versatile when on location or in the studio.

	LDM95	LDM105
Size	ø95cm (37")	ø105cm (41")
Weight	1.0Kg	1.2Kg

# BUTTERFLY LITE FILTER

## Butterfly

**Aurora butterfly grids are designed to fit industry standard frames round tubing or square tubing in different sizes. For diffuser and reflector, eyelets are punched in every 30 to 40cm and squeeze hook fastener comes with for easy and tight fitting. Four corners are sewn with rubber fastener for extra security. Transparent carrying bag allows quick distinction of the content.**

Eight sizes we offer are 4'x4', 6'x6', 8'x8', 10'x10', 12'x12', 12'x24', 18'x18', and 24'x24' and customization is also available upon request.



	USE
Full stop diffusing cloth - warm	Diffusion
Full stop diffusing cloth - natural	Diffusion
1/2 stop grid cloth	Diffusion
1/4 stop grid cloth	Diffusion
Silver/White two sided	Reflection
Silver/Gold two sided	Reflection
Softgold/White two sided	Reflection
Black/White two sided	Light Cut/Reflection
40° soft grid	Light Spread Control

## Lite Filter

**Lite Filters are designed to eliminate strong highlights on subjects.**

Lite Filters work well with any Aurora light source and have a fully adjustable gooseneck allowing them to be positioned accurately.

**HS**



	HS60 set	HS80 set
Size	ø60cm (24")	ø80cm (32")
Weight	2.19Kg	2.28Kg
Color	HSD60 : Translucent HSW60 : White HSB60 : Black	HSD80 : Translucent HSW80 : White HSB80 : Black

**GB**



	GB64 set	GB85 set
Size	45x60cm (18x24")	50x80cm (20x32")
Weight	2.85Kg	3.06Kg

# LIGHT STAND CARRYING BAG

## Light Stand



**ALS 911**

- Steel
  - 1 riser 2 sections
  - Shaft : ø22, ø16mm
- 26cm  
 43cm  
 40.5cm  
 44cm  
 1.0kg  
 4.0kg



**ALS 931**

- Aluminum
  - spring cushion
  - black color
  - 2 risers 3 sections
  - Shaft: ø25, ø22, ø19mm
- 90cm  
 196cm  
 79cm  
 84cm  
 1.3kg  
 4.0kg



**ALS 004**

- Aluminum
  - air cushion
  - silver color
  - 2 risers 3 sections
  - Leg : ø19mm
  - Shaft : ø25, ø22, ø19mm
- 92cm  
 257cm  
 82cm  
 93cm  
 1.4kg  
 10kg



**ALS 005**

- Aluminum
  - air cushion
  - silver color
  - 2 risers 3 sections
  - Leg : ø22mm
  - Shaft : ø35, ø30, ø25mm
- 122cm  
 276cm  
 100cm  
 109cm  
 2.1kg  
 12kg



**ALS 932**

- Aluminum
  - spring cushion
  - black color
  - 2 risers 3 sections
  - Shaft : ø35, ø30, ø25mm
- 123cm  
 281cm  
 103cm  
 108cm  
 2.5kg



**ALS 943**

- Aluminum
  - spring cushion
  - black color
  - 3 risers 4 sections
  - Shaft : ø35, ø30, ø25, ø19mm
- 139cm  
 372cm  
 116cm  
 110cm  
 2.6kg



**ALS 090**

- Steel
  - Shaft : ø35mm
  - One handgrip & 3 wheels included
- 125cm  
 248cm  
 125cm  
 100cm  
 8kg

- Aluminum
  - Shaft : ø22, ø19mm
  - Boom Length : 167cm to 278cm
- 2.3kg



**ALS 003A**

- Steel
  - 1 riser 2 sections
  - Leg : ø22mm
  - Shaft : ø35, ø30mm
- 137cm  
 223cm  
 118cm  
 118cm  
 7kg

## Carrying Bag

All four styles feature heavy-duty carrying straps sewn around the bag for secure support and have a padded carrying handle. Carrying bags have pockets inside and outside of the bag to carry accessories and other small items all bags are made from light and strong durable material.



**AFB101**

- Flash Bag of soft case
- for 2 Flashes
  - Size: 43x23x46cm(16x9x18")
  - Weight: 2.2kg



**AFB102**

- Flash Bag of soft case
- for 3 Flashes
  - Size: 61x23x49cm(24x9x19")
  - Weight: 2.8kg



**ASB201N**

- Light Stand Bag of soft case
- for 4 Stands
  - Size: 120x25x21cm(47x10x8")
  - Weight: 1.6kg



**AFB203**

- Carry bag for two-head kit
- Orion, Sun Light
  - Size: 79x23x29cm(31x9x12")
  - Weight: 2.3kg



## Reflector



**ALR 112**

- Snoot Reflector ø70mm
- for Fusion, Digis, Codis, Genesis, Orion



**ALR 113**

- Background Reflector
- for Fusion, Digis, Codis, Genesis, Orion



**ALRD 114**

- Standard Reflector ø180mm
- Umbrella & Honeycomb grids adaptable
- for Fusion, Digis, Codis, Genesis, Sun Light



**ALR 115**

- Spot Reflector ø210mm
- for Fusion, Digis, Codis, Genesis, Orion



**ALR 116**

- Wide Beam Reflector ø430mm
- for Fusion, Digis, Codis, Genesis, Orion



**ALR 117**

- Narrow Beam Reflector ø340mm
- for Fusion, Digis, Codis, Genesis, Orion



**ALRO 111**

- Standard Reflector ø154mm
- Umbrella adaptable
- for Orion



**ALR 121**

- Protective Cap
- Material : plastic
- for Fusion, Digis, Codis, Genesis, Orion

## Filter / Barndoor



**ACF 041**

- Gelatin Filter Set 7 Color
- Use with ALR 018



**ALR 018**

- 4-Way Barn Doors
- Use with ALRD 114, ø180mm



**ALR 019**

- 4-Way Barn Doors
- Use with ALR 115, ø210mm



**ALR 020**

- 4-Way Barn Doors
- Use with ALR 116, ø430mm

## Honeycomb Grid

Model	AHG 035	AHG 031	AHG 036	AHG 037
Size	ø70mm	ø180mm	ø210mm	ø340mm
Weight	ALR 112	ALRD 114	ALR 115	ALR 117
Light spread	a=10°	b=20°	c=30°	d=60°

