

[HIGHLIGHTS 2008]



THE FUTURE

LIGHTING GEAR FOR ALL THE BEAUTIFUL MOMENTS

HENSEL
performing light



[CONTENTS]



HENSEL HIGHLIGHTS 2007/08



[COMPACTFLASHES] PAGE 2 - 5



[GENERATORS] PAGE 6 - 15



[FLASHHEADS & RINGFLASH] PAGE 16 - 19



[SPECIAL-FLASHHEADS] PAGE 20 - 23



[SPOTS] PAGE 24 - 27



[LIGHTFORMERS & ACCESSORIES] PAGE 28 - 35



[STANDS & STUDIO-ACCESSORIES] PAGE 36 - 46



[CEILING MOUNTED SYSTEMS] PAGE 47 - 51



[FEATURES & TECHNICAL DATA] PAGE 52 - 55



Dear photographer,

We are pleased to present you with the latest Hensel Catalogue. Inspired by many new ideas that you, our customers, have given us over the years, we have produced some extremely innovative flash and lighting products which will help light your path to success.

Whether you can't wait to get your hands on our new bags - perfectly fitted to transport our flash units, or you fancy our new compact remote control - which despite its small size not only triggers the flash but also allows you to control both the flash power and model lamp functions — Hensel will always be full of innovative ideas giving you the tools for your creative expression.

Of course, we have dramatically focused on the needs of digital photography. Fast flash durations, high colour accuracy and user-friendliness are the buzz words. But ergonomics and design are also key factors for our latest generation of flashes. We have taken to heart your requests for simple yet reliable handling, lightness and speed, incorporating these decisive specifications for the development of the Pro Mini line, which we will be extending and continuing over the next few years. In the EH Pro Mini flashes, we have succeeded in generating high levels of flash performance in a small package, without coming up against the limits of thermal overload too quickly. We will continue our development of new products along this path.

The Hensel Team, who invent, develop, and produce our products, are all based here in Würzburg, Germany. I am pleased that you as an photographer have recognized the difference between quality "Made In Germany" products and some of the cheaper imports made in Asia. As the managing director, I would like to take this opportunity to thank you for choosing Hensel, making us successful across the global market.

We can look back on Photokina 2006 as a great success and with many valuable connections with you, the photographers. I would therefore invite you to browse this new catalogue and discover the new opportunities for HENSEL to ease your workflow. Rest assured we will always listen to your requests and we look forward to being put to the test again in the future.

Wishing you every success

Joachim Renschke
Managing Director

Würzburg, August 2007

FOCUS ON FLASH - MADE BY HENSEL IN GERMANY





For technical information check page 54



The new radio remote control
(for more Information look at page 45)

Why do some things work better than others? Why is it that you don't need a user manual to find out how exactly everything works? And why do your fingers find the right switch without hesitation, even in total darkness?

In our case, the answer is easy: it is the result of over three decades of compact flash design, the R&D efforts of an experienced team of engineers and our openness to the needs of our customers.

A particular highlight of this series is a built-in radio receiver providing not only remote triggering but also power and modeling light control. The radio trigger system is technically identical to the one used in the Porty Premium AS/RC. A single transmitter is sufficient for all units! An extremely solid lightweight extruded aluminium casing protects the sophisticated electronics even in the toughest conditions.

The shifting pan-tilt support with gravitational balancing is also made of metal. Its novel fixing mechanism holds the heaviest accessories firmly in place. The reflector mounting has been improved. Massive metal guides make reflector positioning easier, while protecting the flash tube area.

Flash power can be adjusted in a range of 6 f-stops in 1/10 f-stop increments. The selected power level is indicated on a large display.

✕ THE NEW EXPERT PRO PLUS

- + Radio-controllable
- + Front panel with active lighting
- + Automatic energy-saving mode for modeling light
- + Extruded aluminium housing
- + Improved reflector mounting
- + Shifting pan-tilt support



Buttons with active back-lighting ensure easy and secure operation even in total darkness. The switchable, highly sensitive photocell is identical to the one used in the TRIA power packs. A number of other proven features have been taken over (and many of them improved) from earlier EXPERT and Contra models.

Besides compatibility with existing accessories, this kind of continuity ensures a consistent concept of operation.

The units have a 300 W modeling light. Our smart modeling light goes far beyond conventional full and proportional power operation! An electronic system continuously monitors the unit's operation, ensuring that after an adjustable idle time (5 - 90 min) modeling light power is reduced to a preset value. As soon as the unit is reactivated, the previous value is restored. While this innovation sounds less than spectacular, it prevents unnecessary heat built-up and, more importantly, it multiplies the life span of the modeling lamp.

The plug-in flash tubes are protected by an additional dome guard. Short flash durations, excellent light efficiency and recharge times as low as 0.4 s are further important characteristics.

This series goes considerably beyond what is immediately evident by the list of its features. Only after touching these units, operating them and working with them is it possible to fully appreciate our immense experience.



➤ **EXPERT PRO - PLUS 250 - PLUS 500 - PLUS 1000**



[COMPACT FLASHES]

X EXPERT PRO



EXPERT Pro equipment range

There are four differences between the EXPERT Pro range and the EXPERT Pro Plus range. The most important difference is that there is no radio receiver. There is no active backlighting on the front plate, but like the Pro Plus, it has bright LEDs which clearly display the relevant settings. The pan-tilt support has the same mechanical properties, but without the adjustable centre of gravity.

The fourth point is the real bonus! The EXPERT Pro units are the unbeatable affordable entry level for the new EXPERT range.

For technical information check page 54



X THE EXPERT PRO RANGE

THE EXPERT PRO "LIGHT" VERSION

→ EXPERT PRO KITS - EXPERT PRO PLUS KITS

Code No. 50200E - BASIC EXPERT PRO KIT

Code No. 50200 - BASIC EXPERT PRO PLUS KIT

Scope of delivery: 1 x EXPERT PRO 250 (EXPERT PRO PLUS),
1 x EXPERT PRO 500 (EXPERT PRO PLUS), 2 x 300 W Modeling lamp,
2 x Umbrella Flood Reflector, 1 x Umbrella Economy,
2 x Alu Stand III and the Softbag VII "DE LUXE" (4201)

Code No. 50300E - ADVANCED EXPERT PRO KIT

Code No. 50300 - ADVANCED EXPERT PRO PLUS KIT

Scope of delivery: 2 x EXPERT PRO 500 (EXPERT PRO PLUS),
2 x 300 W Modeling lamp, 1 x Umbrella Flood Reflector, 1 x Umbrella Economy,
1 x Softbox 45 x 65 cm, 2 x Alu Stand III and the Softbag VII "DE LUXE" (4201)

Code No. 50400E - PRO EXPERT PRO KIT

Code No. 50400 - PRO EXPERT PRO PLUS KIT

Scope of delivery: 1 x EXPERT PRO 250 (EXPERT PRO PLUS), 2 x EXPERT PRO 500
(EXPERT PRO PLUS), 3 x 300 W Modeling lamp, 1 x Umbrella Flood Reflector,
1 x 7" Reflector with Honeycomb, 1 x Umbrella Economy, 1 x Softbox 80 x 100 cm,
3 x Alu Stand III and the Softbag VIII "DE LUXE" (4191)

Code No. 50500E - EXPERT PRO KIT 2000

Code No. 50500 - EXPERT PRO PLUS KIT 2000

Scope of delivery: 2 x EXPERT PRO 1000 (EXPERT PRO PLUS),
1 x Umbrella Flood Reflector, 1 x 7" Reflector, 1 x Master white umbrella 80 cm
and the Softbag VI (4210)

All EXPERT PRO PLUS KITS including radio transmitter (Code No. 3950)





[COMPACT FLASHES]

X MONO MAX



The power pack in the heavyweight class presents itself in absolute top form. Fit and powerful: up to 3 flashes per second at minimum output. Top-notch technology makes handling fast and easy and the practical remote control eliminates excess leg work in the studio. MONO MAX, the champ with top professional features.

**MONO MAX, THE COMPACT
DIMENSION FROM HENSEL**

For technical information check page 54

X MONO MAX ...THE CHAMP COMPACT WINNER ON POINTS



- > Digital adjustment precision, up to 1/10 f-stops accuracy for exact repetition
- > Flash output and modeling lamp - proportional or independent adjustment, stepless from 1/32 to 1/1 (6f)
- > Proportional adjustment of modeling lamp in 2 f-stops from MONO MAX 750, MONO MAX 1500 and MONO MAX 3000 - making adaption to different flash units easy
- > Slow recycling for operation on weak mains sources, switchable
- > Additional sync socket included
- > Newly developed handle with integrated spare fuses
- > Bracket with integrated tilting head for smooth panning
- > Optional protective colour-correcting glass

HENSEL
DESIGNED & PRODUCED
MADE IN GERMANY

Remote Control

- > Output adjustment in 2/10 f-stops (modeling light proportional to flash output)
- > Standby function
- > Modeling light ON/OFF
- > Test trigger
- > Additional sync socket
- > Ready indicator
- > 5 m cord (possible extension up to 20 m)



MONO MAX 750

MONO MAX 1500

MONO MAX 3000



[COMPACT FLASHES]

X eFLASH



Uncompromising quality in an extremely light but sturdy housing. This housing opens up new design worlds. The dynamic and up-to-date design of the eFlash makes it easy to integrate this unit into the structure of modern studio spaces.

X eFLASH

TODAYS TECHNOLOGY IN TOMORROWS DESIGN

For technical information check page 54



The units' compact dimensions ensure easy portability and the capacity of 210 J is ideally suited for most digital cameras. This power range is perfect for digital passport shots, the small portrait studio and even has table top applications. The units' compatibility with all CONTRA systems, and also EHT series accessories with 10 cm connector diameter, easily integrates it into the vast HENSEL accessory program.



→ eFLASH KITS

Code No. 5017 - eFLASH KIT STANDARD

Scope of delivery: 2 x eFlash, 2 x 150 W Halogen Modeling Lamp, 1 x Umbrella Flood Reflector, 1 x 7" Reflector, 1 x Umbrella Economy, 2 x Alu Stand III and the Softbag "eBag"

Code No. 5013 - eFLASH KIT I

Scope of delivery: 2 x eFlash, 2 x 150 W Halogen Modeling Lamp, 1 x Softbox 45 x 65 cm, 1 x Umbrella Flood Reflector, 1 x Umbrella Economy, 2 x Alu Stand III and the Softbag VII "DE LUXE" (4201)

Code No. 5014 - eFLASH KIT II

Scope of delivery: 3 x eFlash, 3 x 150 W Halogen Modeling Lamp, 1 x Softbox 45 x 65 cm, 1 x 7" Reflector, 1 x Honeycomb round, 20°, 1 x Umbrella Flood Reflector, 1 x Umbrella Economy, 3 x Alu Stand III and the Softbag VII "DE LUXE" (4201)



For technical information check page 54

X THE TRIA GENERATORS

THE MOST BEAUTIFUL, MOST INGENUOUS AND MOST DIGITAL POWER PACK SERIES EVER BUILT

TRIA: designed for digital photography

Digital rotary switches with notch stops, display with 1/10 f-stops, highest repeat accuracy, CTC-technique (colour temperature corrected) for optimized colour temperature—these are the features which give you confidence in your investment in digital technology. TRIA power packs for digital photography today and tomorrow. Superior even in analogous photography.

The TRIA operation logic

In the TRIA concept the intelligence is built-in, the photographer is not distracted by menus and submenus. Straight forward and simple is the motto! Concentrating on the essentials!



Turbo Ignition: The ignition with "kick"

This completely new designed switching technology makes it possible to fire almost every flash tube even the very old ones! Dependable triggering at any power level, even the lowest, and with several flash heads connected. The professional solution for "Power Shooting" under all conditions.



TRIA 1500 SPEED TRIA 1500 S TRIA 3000 S TRIA 3000 AS TRIA 6000 S



[GENERATORS]

✕ TRIA GENERATOR SERIES



TRIA - POWER: MADE IN GERMANY

✕ THE TRIA COMFORT

TRIA - REMOTE CONTROL
COMFORT FROM THE DISTANCE



Code No. 3900 - Flash Link Remote Radio Control for TRIA Generators (not for TRIA 24 S)

Basic set consists of 2 transceivers with software packet for PC (Windows). For MAC on request.

Note: an USB cord is required.

Code No. 3910 - Transceiver, single,

for Flash Link Remote Radio Control.

If little is enough:

A simple, cheap operating panel for the most important functions can be connected through a 5 m cable.

HENSEL FLASH LINK

Remote control and flash firing via radio signal - the clear and simple way. Several groups can work parallel to each other. The system consists of a minimum of two radio transceivers and control software for MAC and PC. One radio transceiver is connected to the computer via USB port, another to the control port of the TRIA generator. Now, with the software, merely double-click and the flash generator can be controlled and triggered. Any change to the generator is relayed to the software and vice versa, since this system is bi-directional. Additionally, multiple flash units can be controlled. In this case, each unit is equipped with its own transceiver or connected via cord, distance permitting. The latter case requires only one transceiver per unit group. A very economical solution!



THE HIGHLIGHTS

- > Highly sensitive switchable photo slave with control LED
- > Flash Check: optical flash control
- > Audio signal, switchable
- > APD: Internal power reduction when reducing the power
- > Power output adjustable in 1/10 f-stops increments over a total of 6 f-stops
- > Only 5 V sync voltage, perfect for digital cameras
- > Metal housing with protection for each corner of the unit
- > Plugmatic
- > Illuminated main switch
- > Modeling light functions: off, full or proportional
- > Symmetrical power distribution
- > Strong handle with integrated spare fuses

X TRIA 24 S - THE "LIGHT" CLASSIC

POWERFUL, IMPROVED DESIGN AND COMPETITIVELY PRICED

Powerful, improved design and competitively priced! The new TRIA 24 S sets new standards within the flash industry!

A classic power pack with workhorse quality and symmetrical power distribution. Flash power readiness is indicated by illuminated main switch and a green "Ready" LED. Power regulation is achieved in precise 1/10 f-stop increments by a rotary dial. All power settings are indicated with a 7-segment-display, visible at a distance and can be repeated consistently. HENSEL Plugmatic ensures a safe connection between generator and flash heads. The unit provides visual flash check and audio confirmation. The photo slave is switchable. The modeling light can be set to off, full or proportional. Bright LED's indicate all settings. The optimized metal housing and the powerful cooling combined with durable electronic components, ensure long term reliability, even in continuous operation.

All the included features guarantee the highest mechanical and electronical reliability for many years.



X TRIA 24 S

For technical information check page 54



[GENERATORS]

X VELA GENERATOR SERIES



Forward thinking with the asymmetrical VELA AS

The new asymmetrical VELA AS Generator from HENSEL, best performance at smallest dimensions. The ideal partner for any location.

The VELA 1500 AS has three easy to use Flashhead connectors. Full power output is available from the symmetrical ports "A1" and "A2" or, additionally, the third port "B" can be used asymmetrically. Also, port "B" allows power output level selection of maximum 500J, 250J or 125 J. This results in a multitude of different power output combinations. The use of capacity switching ensures the stability of colour temperature and offers very short flash times. Please note our diagram "asymmetrical modes". Power regulation is done in precise 1/10 f-stop increments and easy to reproduce! The unit can be regulated over a total range of 6.5 f-stops. Small but powerful is the appearance of the VELA AS in a durable Porty housing which also signals its great mobility. A large digital display shows the selected power levels at all times.

X THE VELA GENERATORS

COMPACT, ASYMMETRICAL, DIGITAL



Ready to flash in an instant, it can be used worldwide with its automatic multi-voltage system. Whether on location or in the studio, durability, mobility, reliability and precision make the VELA AS the ideal partner.

For technical information check page 54

X VELA 1500 S

X VELA 1500 AS

→ VELA KITS

Code No. 3860 - VELA 1500 S KIT

Scope of delivery: 1 VELA 1500 S (Code No. 3802), 1 EH PRO Head (Code No. 3590), 1 Halogen Modeling lamp 650 W (Code No. 129), 1 Umbrella Floodreflector (Code No. 87), 1 Umbrella Economy Ø 82 cm (Code No. 3180), 1 Alu III Stand (Code No. 200), 1 Softbag VII (Code No. 4201)

Code No. 3850 - VELA 1500 AS KIT

Scope of delivery: 1 VELA 1500 AS (Code No. 3800), 2 EH PRO Heads (Code No. 3590), 2 Halogen Modeling lamps 650 W (Code No. 129), 1 Softbox Ultra E 45 x 65 cm (Code No. 4601), 1 Umbrella Floodreflector (Code No. 87), 1 Umbrella Economy Ø 82 cm (Code No. 3180), 2 Alu III Stands (Code No. 200), 1 Softbag VII (Code No. 4201)



ASYMMETRICAL MODES

A1/A2	1500 J - Output adjustment 47 - 1500 J
B	500 J - Output adjustment 31 - 500 J
B	250 J - Output adjustment 31 - 250 J
B	125 J - Output adjustment 31 - 125 J
A+B	1000 J - Output adjustment 63 - 1000 J
A+B	500 J - Output adjustment 31 - 500 J
A+B	1000 J - Output adjustment 125 - 1000 J
A+B	250 J - Output adjustment 31 - 250 J
A+B	1000 J - Output adjustment 250 - 1000 J
A+B	125 J - Output adjustment 31 - 125 J



[GENERATORS]

X PRO MINI 1200 AS



For technical information check page 54

X PRO MINI 1200 AS

SMALL BUT SELF-CONFIDENT

The combination of a newly developed asymmetrical generator and its matching extremely small and powerful flash heads makes for the most amazing travel team. HENSEL designed and created the ultimate in a small and highly transportable flash system. The Pro MINI provides symmetric or asymmetric power distribution, multi-voltage (80-250 Volt) load switching and the same Strobe Wizard radio remote control as the other HENSEL units.

Asymmetric control creates great creative room in light direction and the use of several flash heads on a single generator. Capacitor circuits ensure quick flash durations and a very stable colour temperature over the whole control range of the generator. In conjunction with high performance electronics, this allows for a much greater power range of 37,5 J to 1200 J, adjusted in 1/10 f-stop increments. A further highlight of this range is its fast, 3-channel radio-control triggering. 3 adjustable channels, an all-channel function, modeling light control and power adjustment provide comfort in the studio.



→ PRO MINI 1200 AS KIT

Code No. 7023512 - PRO MINI 1200 AS KIT - 1x Pro Mini 1200 AS Generator (3512), 2x EH Pro Mini Head (3605), 1x Radio Flash Trigger and power control transmitter "Strobe Wizard" (3950), 1x 7" Reflector (504), 1x Ultra Softbox E 80 x 100 cm (3080100), 2x Alustand (200), 1x Softbag VII (4201).



[GENERATORS]

X PORTY PREMIUM PLUS



The new radio remote control
(for more information look at page 45)



For technical information check page 54

X THE PORTY PREMIUM PLUS

THE NEW RADIO CONTROLLED

The proven Porty Premium 1200AS/RC was further enhanced and now has one more button to make the user's (photographic) life easier. This button is the key to using the revised radio remote control system. The new Porty PREMIUM PLUS with an integrated radio receiver offers not only the possibility of radio-controlled triggering but also provides the option of power adjustment in 1/10 f-stop increments. Even the modeling light can be switched on and off remotely. The channel can be easily selected by using the RC/CH button on the operator panel. In total, there are 3 different channels available on the device. On the receiver, the channel is selected by means of a sliding switch on the side. There, you can also select an additional all-channel function, by means of which several devices can be controlled simultaneously. Shortest sync times of cameras can be used without restriction. Thanks to the transmitter's low 6 V voltage, this system offers unquestionably the safest mode of operation, particularly in conjunction with digital cameras. It can connect either to the camera's direct X-contact or, using the sync cable provided, to the camera's sync socket. The Porty's radio antenna is now screwed on and can be easily removed or replaced by the user if needed. Another advantage of this technology: When working over great distances, a special longer antenna with considerably increased sensitivity (accessory) can be used. In response to the wishes of many of our customers, the previous sync socket was replaced by a standard sync socket with a diameter of 6.3 mm. Thus all standard sync cables can be connected. The socket is protected against water drops by means of a seal plug.

AUTOMATIC CAPACITY MANAGEMENT

ASYMMETRICAL



[GENERATORS]

X PORTY 1200 B - EH PRO MINI 1200 PORTY



Plenty of power, modeling light, high quality light formers equal to those of the most sophisticated studio systems - 200 miles away from the next power source all at cozy 0 degrees. ANY PROBLEMS? No, the perfect job for the HENSEL PORTY 1200 B.

Battery operated power pack with 1200 J maximum power output and symmetrical power distribution. Batteries can be exchanged within seconds using the newly developed battery drawer with quick release and handle for easy pull out. Power output adjustable in 1/10 f-stops increments over a total range of 6 f-stops. Heads with built-in halogen modeling lights with switchable auto shut off. Automatic power dumping for power reduction without triggering the unit. Built-in slave. Water resistant control panel with fluorescent touch buttons. Caps to seal off unused power- and sync sockets against water and dust. Provides safety even under tough outdoor conditions. Lead gel batteries with no memory effect. Batteries can be recharged with multi voltage quick charger within 2,5 hours. One battery charge is good for 100 flashes at full power or up to 3200 flashes at min. power. Batteries can be recharged inside or outside of the power pack.

For technical information check page 54

X PORTY 1200 B THE ORIGINAL

THE OUTDOOR GENERATOR
WITH NO LIMITS ON LOCATION



X EH PRO MINI 1200 PORTY

ESPECIALLY DESIGNED HEADS FOR THE
OUTDOOR GENERATOR PORTY



An innovation in the new range: The flash cables are no longer mounted to the head but can be unscrewed. This provides 3 particular advantages: The pack size is reduced, thus the flash head is lighter and easier to stow. The separate cable is easier to roll up and the user can choose the required cable length in advance. Cables are available in lengths of 5, 7 and 10 m. Of course, customised lengths are also available. The modelling lamp of the EH Pro Mini 1200P (Porty) head provides up to 100W. Alternatively, permanent or timed (30 s) operation can be pre-selected for the modeling light by means of a switch on the head. There are appropriate adapters available for use with other generators. All accessories with a connector diameter of 10 cm from the EH, EHT, Contra, EXPERT and EXPERT Pro ranges are still compatible. The heads are protected by the usual sturdy HENSEL metal housing.



For technical information check page 55



[GENERATORS]



ACCESSORIES PORTY 1200 B / PORTY PREMIUM PLUS



ACCESSORIES PORTY 1200 B

Code No. 5670 - Porty multivoltage charger

Despite of the extremely short charging time (a completely empty battery is charged in just 2,5 h) the most important feature of this charger are the exchangeable plugs. They make it possible to use the unit worldwide. A voltage range from 90 V to 250 V can be used. Included in delivery are the adapters for USA/Japan, Australia/New Zealand, UK and Germany(Europe). The charger works with pulse charge in order to prolong the lifetime of the battery. The charging plug has a screw fixture so that an optimal connection and a safe charge is ensured. The charging control LED displays information about the charging status.

Code No. 516 - Charging adapter cable

Only for charging old style batteries (Code No. 496) outside of the power pack. Not needed with the new battery drawer which uses the same charging connector as the Porty Pack itself.

Code No. 1496 - Battery drawer with battery

The fastest and easiest way ever to change batteries in a battery operated power pack. Batteries can now be changed by simply releasing one lever that securely locks the drawer. With a fully charged battery the Porty is ready for another 100 flashes at full power in less than 5 seconds!

Code No. 2496 - Battery drawer without battery

Same as Code No. 1496 but without pre-installed battery. For use of old style batteries with the new Porty packs. The existing batteries can easily be installed in the drawer without any rewiring.

Code No. 496 - Lead Gel Battery 12V/ 7Ah

For old style Porty packs or as replacement for batteries installed in the drawer of new packs. High power lead gel cell battery. No memory effect, so batteries can be recharged at any discharging level without loss of capacity. The battery is completely sealed and does not contain any liquid acid. This way it can be operated in any position as well as checked in as luggage for air travel.

Code No. 498 - Special Sync Cord for Porty

5m long special sync cord. Screw-in connector for water and dust resistant connection. Can only be used with Porty 1200 pack or EHT Porty Head. Standard scope of delivery with Porty 1200 Power Pack Code No. 495 and 4592.

Code No. 122 - Sync Cord with Phone Jack

Standard Sync Cord with 6,3mm phone jack for use with Porty EHT Head.

Code No. 579 - Porty Head Extension Cord

3m long to extend Porty Head cables. Head extension cables can be made in other lengths on special order.

Code No. 578 - Porty Adapter cable for HENSEL studio heads

Makes the PORTY even more versatile. Allows you to connect the entire range of HENSEL studio Heads like Shutterstriplights, Maxi Flooders, Projection Spots and many more to the Porty. Access to the most unique and highest quality light formers world wide. Take your studio on location for unsurpassed lighting quality and unlimited creative freedom.



ACCESSORIES PORTY PREMIUM PLUS

Code No. 2497 - Battery Drawer without Battery

The existing batteries can easily be installed in the drawer without any rewiring.

Code No. 4791 - Lead Gel Battery 12 V / 12 Ah

High power lead gel cell battery. No memory effect, so batteries can be recharged at any discharging level without loss of capacity. The battery is completely sealed and does not contain any liquid acid. This way it can be operated in any positions as well as checked in as luggage for air travel.

Code No. 1497 - Battery Drawer with Battery

Battery Drawer Code. No. 2497 complete with pre-installed lead gel cell battery Code No. 4791.

Code No. 5671

Porty Premium Multivoltage Charger

The extremely short charging time and multivoltage technology are the special features of this charger. The unit can be used with all voltage ranges between 100 V and 250 V. The mains cable can be adapted to different outlet types. The charger has an electronic sensor that "recognizes" connected HENSEL battery packs. This ensures the careful and effective charging of 7Ah and 12 Ah battery packs in the shortest amount of time. (Charging duration 12 Ah approx. 2,5 h)

Code No. 5670



Code No. 1496



Code No. 578



Code No. 5671



PORTY KITS

Code No. 970 - PORTY TRAVEL Kit

Lightweight sturdy backpack with enough space for Porty and useful accessories. Consists of: 1 PORTY 1200 B Power Pack, 1 EH PRO MINI 1200 PORTY, 1 Quick Charger, 1 Umbrella Flood Reflector, 1 Alu Stand III, 1 7" Reflector with honeycomb (Code No. 509), 1 Master Umbrella white Ø 105 cm and the famous backpack.



Code No. 9700 - PORTY PREMIUM PLUS Kit

Consists of: 1 PORTY Premium Plus, 1x EH PRO MINI 1200 PORTY, 1x Radio Remote Transmitter, 1 x Premium Multivoltage Charger, 1 x 7" Reflector, 1 x Alustand III, Cable Set, with the Softbag VII De Luxe.





[GENERATORS]

X THE HENSEL GENERATORS - OVERVIEW

X TRIA For technical information check page 54



➤ TRIA 3000 AS

➤ TRIA S-SERIES

➤ TRIA 24 S

X HENSEL GENERATORS

FEATURES & HIGHLIGHTS

X VELA For technical information check page 54



➤ VELA 1500 S

➤ VELA 1500 AS

X PRO MINI



X PORTY For technical information check page 54



➤ PORTY 1200 B

➤ PORTY PREMIUM PLUS



[POWER PACK]

X VISIT MPG 1500



Mains voltage at the beach, in the woods, at the quarry pond or on mountain tops! Whereas, in the past, heavy and expensive generator sets were necessary and produced noise and exhaust gas, nowadays the VISIT Mobile Power Generator 1500 inverter is available as a source of energy. It has two outlets which allow for the operation of a maximum of 2 x 500 J flash devices or 1 device with 1000 J and 1 device with 500 J of flash power. Of course, other electrical devices, such as laptops or personal computers can also be plugged in. The only requirement is that power consumption should not be too high (max. 300 W).

A quickly replaceable battery drawer with a lead gel battery and no inconvenient memory effect serves as a power supply. With this system, a 500 J device can yield approximately 130 flashes at full power. If a modeling light is being used, the number of flashes is reduced. Additional battery drawer increase the capacity accordingly and can be changed in seconds, thanks to the brilliant tray system. The drawer are compatible with those of the HENSEL Porty 1200 B system and thus facilitate multiple utilisation. In total, there are three possible ways of charging the batteries: By means of a charger connected to the mains at any power outlet (110 V – 240 V, automatic selection) or with the VISIT Car Adapter on all normal 12 V car batteries.



X THE NEW VISIT MPG 1500

MOBILE AND ATTRACTIVE



Alternatively, the device can be charged using the VISIT Car Charger CC3 on the car cigarette lighter socket or by means of a 12 V electrical outlet. Finally, you can carry your own personal outlet in your hand luggage, thereby greatly enhancing the potential applications of your mains-powered devices.

VISIT MPG 1500 Kit

Code No. 985 for 230 V output voltage - **Code No. 978** for 115 V output voltage

The kit consists of: 1 MPG 1500 inverter, 1 additional battery drawer, mains charger (multivoltage), all items safely stored in an appropriately sized soft bag with a carrying strap.

Visit Car Charger CC3

The VISIT Car Charger facilitates the charging of Porty 1200 B, Porty Premium 1200 AS/RC and Porty Premium Plus battery drawer as well as the VISIT MPG 1500 inverter battery drawer. The charger can be operated on all 12 V electrical systems. The connector fits classic cigarette lighter sockets as well as all popular 12 V electrical outlets. A 7.2 Ah battery can be charged in approximately 2.5 hours and a 12 Ah battery in approximately 4 hours. Both connector cables are solidly mounted to the device, approximately 1 m for the battery tray connection and 2.3 m for the connection to the 12 V electrical system.

Measurements: (LxWxH) 125 x 100 x 55 mm. Weight: approx. 620 g. **Code No. 980**

VISIT Car Adapter

The VISIT Car Adapter increases the capacity of your Porty 1200 B or of your VISIT MPG 1500 inverter to a virtually unlimited extent! If the Car Adapter is inserted in place of the battery drawer, the required current can be taken directly from a 12 V car battery. Thanks to sturdy terminal clamps with electronic protection against miswiring and an integrated interference suppression filter, all kinds of contact problems are reliably avoided. With a normal 88 Ah car battery and a Porty 1200 B at full power, you have more than 2000 flashes at your fingertips. If the battery is recharged by the car engine, the adapter can be operated for a practically unlimited time. The housing is compatible in type and design with the Porty B or the VISIT MPG 1500 inverter battery tray.

Measurements: (LxWxH) 221 x 118 x 90 mm. Weight: approx. 2 kg. Scope of delivery: incl. connector cable with terminal clamps for 12 V car batteries, length approx. 5 m - **Code No. 979**



[FLASH HEADS]

EH PRO HEADS



The Highlights

- > Sturdy housing in 2.5 mm aluminium drawn profile
- > Metal reflector quick-change system
- > Utmost stability for reflectors and accessories
- > Robust reflector holder plate in cast aluminium
- > Slot-in flash tubes
- > Slot-in safety dome (several models available)
- > Further improved pan-tilt support with excellent stability
- > New flash cable inlet at the head
- > 5 m flash cable with low inner resistance for maximum performance
- > Bright modeling light up to 650 W
- > Powerful and silent fan
- > On / off switch for modeling lamp on the head.
- > Max. loading 3000 Ws.

THE EH PRO HEADS

CONSISTENTLY & PROFESSIONAL
THE FLASH HEAD-LINE FOR DEMANDING
EVERYDAY USE

Consistently professional, consistently stable in every respect and consistently compatible! In short, the new EH Pro range from HENSEL is, if you look closely, the sum total of 40 years of experience!

Housed in a 2.5 mm thick solid aluminium drawn profile with a metal reflector quick-change system and a cast pan-tilt plate made of aluminium, these heads are perfect for any professional because of their mechanical construction alone.

The heads can be used with all EH accessories. Typically for Hensel, the reflector can be put on or taken off in any position and / or rotated about 360°. Slot-in flash tubes, the bright 650 W modelling light, the high-performance yet quiet fan and a clear safety dome are also part of the basic equipment, as is the integrated umbrella holder with fast-clip fitting. For further colour-corrected and frosted safety domes, see price list. There is a on/off switch for modeling lamp on the head.

The flash tube / modeling light position has been optimized under measurement room conditions using specialist analysis software and stroboscope camera technology, so it offers the best possible combination of flash and modeling light, optimum light yield and short burn-down times. All this combined with the almost legendary durability of the flash tubes gives a stable colour temperature and low maintenance costs.

In simple terms: Consistently good!



For technical information check page 55

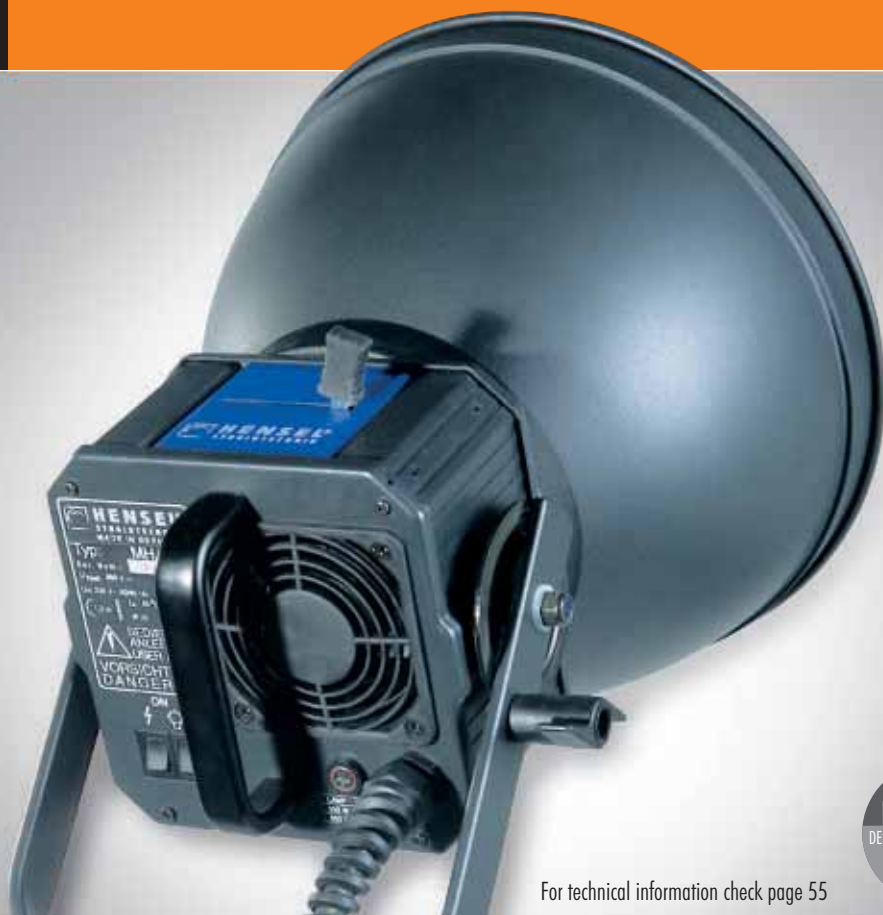
EH PRO HEAD

EH PRO HEAD 6000



[FLASH HEADS]

X MH HEADS



HENSEL
DESIGNED & PRODUCED
MADE IN GERMANY

For technical information check page 55

X MH HEADS FROM HENSEL

INTELLIGENT FLASH HEADS

Everything else has been newly designed:

- > Newly constructed housing in nicely shaped aluminium profiles.
Blue operation panel, extremely compact size!
- > Housing and mechanical elements in full metal construction for rugged, daily use
Newly developed swivel bracket for uncomplicated fixing in any position
- > Improved automatic for quick reflector change - extremely strong hold for heavy loads
additional lock to avoid unintentional loosening
- > Newly developed umbrella holder with special clamp mechanism directly on flash head
- > Separate ON/OFF switch for modeling lamp and flash
- > Modeling lamp up to 650 W halogen
- > Protection sheath to prevent cable breakage
- > Compatible with the operating system of all other HENSEL units

Up-to-date technology with clever features „now more compact than ever!

The HENSEL reflector diameter - so that complete system compatibility with existing equipment is guaranteed.



MH HEAD 3000

MH HEAD 3000 SPEED

MH HEAD 6000



For technical information check page 55



THE NEW EH PRO MINI HEADS

THE BEAUTIFUL FLASH HEAD FOR OUR POWER GENERATOR PRO MINI 1200 AS

An innovation in the new range: The flash cables are no longer mounted to the head but can be unscrewed. This provides 3 particular advantages: The pack size is reduced, thus the flash head is lighter and easier to stow. The separate cable is easier to roll up and the user can choose the required cable length in advance. Cables are available in lengths of 5, 7 and 10 m. Of course, customised lengths are also available. The EH Pro Mini is equipped with a modeling light of up to 650 W, a high-performance fan and a modeling light switch on the head. Alternatively, permanent or timed (30 s) operation can be pre-selected for the modeling light by means of a switch on the head. All EH Pro Mini heads can be used with Pro Mini generators. There are appropriate adapters available for use with other generators. All accessories with a connector diameter of 10 cm from the EH, EHT, Contra, EXPERT and EXPERT Pro ranges are still compatible. The heads are protected by the usual sturdy HENSEL metal housing. Max. loading 3000 Ws.



EH PRO MINI HEAD & PRO MINI 1200 AS



For technical information check page 55

**The roundest way of shining light into the dark. Flexible connections, flexible power and flexible accessories!**

Following a re-development process from scratch, we present a brand new ring flash generation with dedicated accessories and fascinating features. Its major characteristics are an extremely light weight of around 1,800 g, amazingly short flash durations thanks to the special 4-pin flash tube and excellent handling characteristics. A front diameter of 105 mm makes the ring flash suitable for fast telephoto or medium format lenses. The built-in camera mount provides for maximum flexibility and adjustability, allowing you to use the ring flash with almost any type of camera.

X THE NEW HENSEL RINGFLASH**NO LOOSE ENDS: HENSEL'S NEW RINGFLASH**

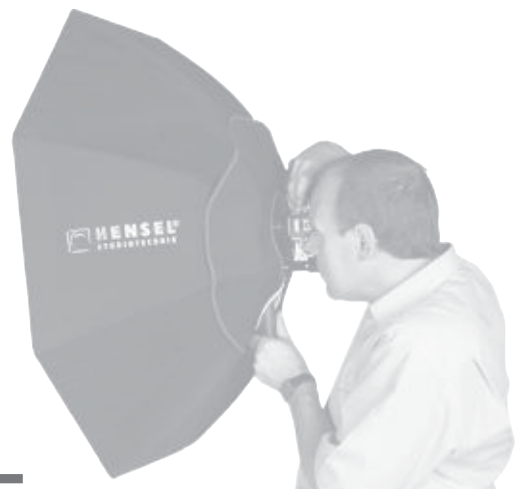
A special highlight: The entire mount can be rotated by 180°, allowing for ideal positioning particularly for upright shots. This also ensures excellent handling by both left- and right-handers.

This ring flash gives you the freedom to shoot free-handed all day long. The ergonomic grip attached to the housing also provides strain relief and kink protection to the flash cable. The protective pane in front of the flash tube is easily replaced and is available with different coatings, in clear and matte versions.

This ring flash offers excellent efficiency coupled with a very homogeneous light distribution right out of the box. All this in spite of a very wide angle, unusual in a ring flash and allowing for the use of short lenses.

RF 3000 P/PM-XS

RF 3000-XS

**➤ OCTA SUN HAZE RF 90 - THE RINGFLASH-SOFTBOX**

We offer a very special and lightweight softbox for this ring flash. The OctaSunHaze RF 90 provides hard, directional light at the centre, combined with softer light towards the edges of the box. While preserving the general character of the ring flash, this softbox makes the light visibly softer — with an astonishing light efficiency: only 0,5-1 1/3 f-stops less (depending to the diffuser combination) than the ring flash without attachment! (Code No. 4000901)



X FLASHBOXES

HENSEL'S FINEST LIGHT ON THE WHOLE SURFACE



Because of very even distribution light on the whole surface of these boxes is perfect for the illumination of glossy surfaces. The compact dimensions and the evenly distributed light make them also ideal for table top and object shots. The big Flash Boxes are perfect as light sources for reproduction use. All Flash Boxes have a solid metal housing with perspex pane and modeling light.

The following versions of FLASH BOXES are available:

Code No. 64 - Flash Box 15 x 20 cm with max. loading of 3000 J, with mounting, measurements, L x W x H: 15 x 20 x 11,5 cm, weight: 3,0 kg, cable length: 5 m

Code No. 78 - Flash Box 20 x 30 cm with max. loading of 3000 J, measurements, L x W x H: 20 x 30 x 16,5 cm, weight: 3,5 kg, cable length: 5 m

Code No. 57 - Flash Box 30 x 50 cm with max. loading of 3500 J, measurements, L x W x H: 30 x 50 x 16,5 cm, weight: 5,2 kg, cable length: 5 m



X STRIPLIGHTBOXES

The Striplight Boxes are suitable for all uses, where you need long shaped and even light (often table top applications). They have a solid metal housing and a perspex pane. They are further equipped with a linear flash, halogen modeling light and a mounting frame.

The following Striplight versions are available:

Code No. 720 - Striplight Box 90 with linear flash 90 cm, max. loading 3500 Ws, modeling light 2 x 150 W, length: 100 cm, Weight: 8,1 kg, Cable length: 8m, delivered with two frames for horizontal or vertical panning

Code No. 699 - Striplight Box 140 without linear flash 140 cm, max. loading 4000 Ws, modeling light 3 x 150 W, length: 145 cm, weight: 11,3 kg, cable length: 8m, delivered with one frame for vertical panning

X HENSEL LIGHTBAR 130

A slimline, clear light for even lighting and gradients using a tunnel diffusor. Cleanly definable shadows can be achieved using the precise adjustment of the flaps/wings. The outstanding pluses include mirroring of lines, emphasis of edges and contours. You can use several light bars side by side with no light interruption.

Code No. 9930 - HENSEL Lightbar 130, L x W x H: 130 x 13 x 22,8 cm, Weight: 9,1 kg, Cable: 5 m

Code No. 9518411 - Barndoors for Lightbar 130





[SPECIAL-FLASHHEADS]

✕ AUTOLIGHTS - TABLE TOP AUTOLIGHT - MEGALIGHT



AUTOLIGHT... The probably strongest, most even and most flexible light bank system from HENSEL. The basic construction of an Autolight is incredibly simple. A carrying structure made out of solid aluminum sections, an outside cloth with diffuser fixed with velcro strips, and a specially developed prism in which a "standard" linear 140 unit flashes.

✕ AUTOLIGHTS A HIGHLIGHT OF LARGE SURFACE ILLUMINATION

This is the design of the most constant, powerful, and also most flexible large textile light bank system you can imagine. Ideal to use for perfect symmetry and if large light reflections are to be set. Due to the basic construction only one single outside diffuser is needed. The result will be a very brilliant and contrasty light despite the large surface!

The Linear Flashes are also used with the Megalights! When placing an order, please consider individually required cables with special length. Please ask your technical adviser! More information about the Linear Flashes on page 23.



Incredibly light! The basic element with 1,3 m x 2,0 m has got a weight of only 13 kg, the Linear Flash included!

Incredibly extendable! Very similar to the "Lego System", as many Autolights as you like can be lined up lengthwise. Of course, without any disturbing shade caused by cross beams! The result is a completely homogeneous illumination, as long as necessary!

Incredibly exact! Available as accessory: the black side frame for 100 % precise reflex lighting. Fixed with velcro strips

Incredibly constant! With a width of 1,3 m, it makes no difference if the Autolight is 2m, 4m, 6m, 8m or even 12 m long — the maximum light decrease amounts to only a few tenth f-stops.

Incredibly handy! Also the largest Autolights can easily be put into every desired position thanks to different motor suspensions. There is a mechanical suspension device available for the basic model! (please check our ceiling system brochure!)

Incredibly easy to roll! In no time, the Autolight is uncoupled from the swivel stand and can be rolled through the studio on a suitable frame with rolls (accessories!)

Incredibly changeable! The Linear Flash units can be turned in their position and thus, a very differentiated illumination can be created. In order to obtain a more contrasty light guidance, you can also work without front diffuser.

Incredibly multipurpose! Every single element has an integrated Linear Flash 140! The power and the cable load can be chosen independently and thus perfectly adapted to individual circumstances. The Linear Flash units can also be removed and be used separately or in combination with the Striplight Box 140 for many purposes.

Code No. 891 - Autolight 130 x 200

Included in delivery: Basic element, (78 cm height) with stand, prism, outside cloth and diffuser. The Linear Flash has to be ordered separately.

Code No. 897 - Autolight 130 x 400

Code No. 898 - Autolight 130 x 600

Code No. 899 - Autolight 130 x 800

Special sizes on request!

Code No. 892 - Autolight extension 1,3 m x 2 m

Lengthening element for the extension of the Autolight. Complete with Prisma, special outside cloth without outside diffuser. Linear Flash and outside diffuser (appropriate to the final length of the individual Autolight) have to be ordered separately!

Code No. 861 - Suspension rails 400, for Autolight 400

These rails have to be used if the total length measures 4 m or more. Please ask your technical adviser.

Code No. 862 - 1 pair of suspension rails, length 600 cm

Code No. 863 - 1 pair of suspension rails, length 800 cm

Special sizes on request!

Code No. 796 - Side Frame for Autolight

Can be fixed fast and without any difficulties by means of a velcro strip. Guarantees 100 % exact reflex lighting!



[SPECIAL-FLASHHEADS]

✕ AUTOLIGHTS - TABLE TOP AUTOLIGHT - MEGALIGHT

Success makes attractive, and, in many cases, attraction bears fruit - namely "children"! It's the same with the Autolight. Not everybody needs the large surface. But the excellent light output and the very constant illumination are indispensable for many professional applications!

Code No. 9011 - Table Top Autolight Flat

L x W x H: 140 x 80 x 45 cm - Revised flat version of the Table Top Autolight. Ideal to use, if the height of the ceiling is restricted.
Weight: approx. 11 kg with bracket and Linear Flash.

✕ TABLE TOP AUTOLIGHTS

- Very easy handling thanks to compact measurements!
- The perfect size, if you work with a stand.
- Absolutely constant with highest light output.
- The Linear Flash can also be used separately.
- Frontdiffusor with an attached textile frame for precise reflex lighting.
- Can also be used without frontdiffusor!
- Thanks to the useful U-bracket which is included in delivery, the Table Top Autolight can be swiveled and centrally turned without any problems!

Code No. 903 - Table Top Autolight Large

L x W x H: 200 x 130 x 45 cm - This is the XL - version of the Table Top series. Comparable to a "large" Autolight, but only 45 cm high. For this Autolight, a Linear Flash 140 is required. The Table Top Autolight cannot be lengthened, and the U-bracket (accessory) is not included in delivery!

✕ BIG, BIGGER, MEGALIGHT



The HENSEL XXXL Light - ideal for the XXXL-use of the "mega user"! Equipped with all features of the Autolight, the concept of this large textile light bank enables to line up the 1,3 m x 2,0 m basic elements breadthwise.

Thanks to a new designed special prism top datas in constant illumination are guaranteed. In relation to the large surface, the light out-put is just fantastic!

Code No. 927 - Megalight 200 x 260

Basic element, complete with frame, prism, outside cloth and outside diffusor. The Linear Flashes (2 pcs.) have to be ordered separately.

Code No. 928 - Megalight 200 x 390 - The Linear Flashes have to be ordered separately. (3 pcs.)

Code No. 929 - Megalight 200 x 520 - The Linear Flashes have to be ordered separately. (4 pcs.)

Code No. 948 - Megalight 200 x 650 - The Linear Flashes have to be ordered separately: (5 pcs.)
Special sizes on request!

Code No. 950 - Megalight 130 x 200, lengthening

Lengthening element for the extension of the Megalight. Complete frame with prism, special outside cloth without outside diffusor. The Linear Flash (1 pc.) and the outside diffusor (appropriate to the final length of the Megalight) have to be ordered separately.

Code No. 861 - Suspension rails 400, for Megalight 390

These rails have to be used from the total length of 3,9 m on.
Please ask your technical adviser.

Code no. 862 - 1 pair of suspension rails, length 600

Code no. 863 - 1 pair of suspension rails, length 800

Other sizes on request!

Code No. 799 - Wheel carriage for Megalight

Very solid construction out of square aluminium sections, which is to be put on the back side. With two flexible plastic casters, which are fixed instead of the corner squares. The conversion is made within only a few minutes and you need only a screwdriver. Thanks to the extremely light construction (only about 39 kg weight with a surface measurement of 8 m²!) up to 3,9 m high Megalights can easily be moved by means of the wheel attachment.

For further information about the motorized suspension/rotating systems have a look at page 47 "CEILING MOUNTED SYSTEMS."



[SPECIAL-FLASHHEADS]

X LINEAR - / U - FLASH - HEADS

X LINEAR FLASH THE LONG

Linear Flash 90-3000

Compact Linear Flash with one flash tube and 2 halogen lamps with 150 W each. For use in a Striplightbox or separately with "allround-light-characteristics".

Code No. 915 - Linear Flash 90-3000

max. loading 3000 J, housing length: 95 cm
weight: 2,7 kg, cable length: 8 m

Linear Flash 140

Compact Linear Flash with 2 flash tubes and 3 halogen lamps with 250 W each. For use in a Striplightbox or separately with "allround-light-characteristics".

Code No. 894 - Linear Flash 140-4000

max. loading 4000 J, housing length: 140 cm, weight: 3,1 kg,
cable length: 8 m

Code No. 912 - Linear Flash 140-8000

max. loading 8000 J, housing length: 140 cm, weight: 3,1 kg,
cable length: 8 m

Code No. 913 - Linear Flash 140-2 x 3000

max. loading 2 x 3000 J, with 2 connecting cables,
housing length: 140 cm, weight: 3,8 kg, cable length: 8 m

Linear Flash Head

Code No. 67 - Linear Flash Head 24

max. loading 3500 J, without barndoors, without modeling light,
housing length: 24 cm, weight: 1,5 kg, cable length: 5 m

Code No. 9150 - Linear Flash Head 80

max. loading 3000 J, without barndoors, without modeling light,
housing length: 79 cm, weight: 1,9 kg, cable length: 5 m

X LIGHT STICK

FLASHLIGHT TO HIDE

These units allow, due to their method of construction, to hide them in the photograph. No matter if you put in the engine compartment, in the built-in cupboard or in/under a lampshade - there is always space to find for this useful little helper. Only flash, no modeling light.

Code No. 378 - LIGHT STICK

max. loading 3000 J, length: flash tube 12,5 cm
(with mounting 26 cm), weight: 0,75 kg,
cable length: 5 m, connection: 20 pole standard plug





Good things come in small packages! There is no other spot which offers such flexibility and power in combination with a very moderate price! The STARSPOT is also an ideal all-round partner in the studio as well as on location. Even the smallest HENSEL Fresnel spot distinguishes by the basic advantages of its big brothers. Besides the well-known accessory range (the 4-wing barn door and the narrow snoot tube) HENSEL offers further, individual ways of completion. With only one basic item even the most different ways of application can be perfectly covered.

For technical information check page 55



HENSEL
DESIGNED & PRODUCED
MADE IN GERMANY

X THE LIGHT-CHAMELEON

A STAR WITH MANY DIFFERENT FACES

Code No. 791 - Fibre Optic Set

A complete fibre optic set consisting of a fibre optic (Ø 10 mm, length: 100 cm, with focusable lens, pluggable filter frame / filter holder, inclined anti-dazzle device, table top tripod, articulated arm and optical adapter for three fibre optic items). Can be fixed by means of an adapter plate (Code no. 234).

Code No. 698 - Fibre Optic Kit

The "beginner package" for close-up shots. Consisting of: fibre optic (Code no. 791), one additional fibre optic (code no. 693), one articulated arm (Code no. 429) with fix clamp (Code no. 135) and a light accent attachment (Code no. 637), completely packed in one safety case (Code no. 391).

Code No. 692 - Fibre Optic 10 mm

Fibre optic with a diameter of approx. 10 mm, focusing lens with adaptable filter holder, inclined anti-dazzle device. Total length: approx. 1 m. The fibre optic shows a flexible construction and ideally needs a holder / flexible arm to be set into position.

Code No. 693 - Fibre Optic 5 mm

Fibre optic with a diameter of approx. 5 mm and focusing lens. Total length: approx. 0.5 m. Due to the metal jacket, the fibre optic guarantees for sturdy flexibility and due to its rigidity it is possible to freely adjust it without any further holding device.

Code No. 230 - Honeycomb Grid Set

To further limitate the circle of light or to set well-aimed passing light rays, a honeycomb grid set for the STARSPOT is available, consisting of 4 honeycombs and the corresponding honeycomb holder. With another holder these honeycombs can also be used on the EXPERT SPOT 500, EXPERT Spot head or CONTRA E 1000 Spot. Please take further details from the description: Honeycombs EXPERT Spot.

Code No. 221 - Honeycomb Holder, Replacement Set

Code No. 689 - Optical Adapter for Fibre Optic

Adapter plate for max. 3 fibre optic items. Can be used directly with EXPERT Spot or by means of the adapter plate (Code No. 234) directly with the STARSPOT: If the adapter for projection attachments (Code No. 234) is inserted into the STARSPOT, all types of accessories of the EH 500 Spot and the EXPERT C 500 Spot (narrow snoot only in the front insertion) can be used. Please find further accessories in our leaflets "The Complete Works".

Code No. 234 - Adapter for Projection Attachment

By means of the projection attachment (Code No. 624) with its high-quality projection lens the STARSPOT becomes a full projection spot. By using the adapter plate the projection attachment can be directly inserted into the spot. Therefore, it is possible to project all types of grid masks, glasses and gobo metal projection masks with which you can create interesting background effects, e.g. stars, grid structures, skylines etc. These possibilities can, of course, be combined with colour gels and/or cutted masks. Focusing and blurring of the projection can be chosen optionally and steplessly adjusted.

Code No. 637 - Light Accent Set

The light accent set (Code No. 637) can also be used in connection with the adapter plate (Code No. 234). It consists of a ground plate with attachment piece. This has a small opening for adapting a special, small filter holder. By means of the filter holder it is possible to easily use colour or diffusion gels for creative light design. The scope of delivery also includes two snoot attachments: 17 cm and 36.5 cm length. The light opening corresponds to the diameter of a approximately 3 cm. Smallest objects like jewellery, watches or technical components, e.g. switches, boards or micro chips, can be "shown in the most favourable light" by means of the light accent set.

Code No. 4630 - Sunhaze Box

NEW — The softbox for Fresnel spots. Its' unique and patented functional principle provides the studio with light. Light, just like the sun is breaking through a brightening up sky. Insignificantly softened Fresnel light in the middle with soft light in the periphery from one direction! Fits Starspot. Adaptation for further Spots with 10 cm front diameter after inquiry.



[SPOTS]



FRESNELSPOT - FRESNEL MAXI SPOT



FRESNELSPOT 3000/6000

The elegant, traditional outfit adapts in any photographic studio. Light characteristic is also absolutely convincing. By means of the big projection mirror, the special spot flash tube and the perfectly adapted fresnel lens gives the classic movie light with a flash spot. Hard and even light guarantees for highest colour saturation and sharp definition of the shade. A special accessory range and a fan cooling allow for permanent use of fashion, furniture and table top photography.

Maximum capacity: up to 3500 J. Focusing by means of the thread mechanism, with 20 cm fresnel lens and full-metal housing with insertion possibility for accessories. Modeling lamp up to max. 650 W.



THE CLASSIC MOVIE LIGHT

For technical information check page 55

Code No. 661 - Slide Holder

For projection attachment (code no. 941). Takes 6 x 6 cm slides. For doing this, you need a special glass/grid mask holder.

Code No. 662 - Gobo Holder for projection attachment (code no. 941).

Code No. 225 - Accessory Set for Fresnelspot

Consisting of: 4-wing-barndoor, narrow snoot tube and filter holder for colour and diffusion gels. The ideal completion for nearly all types of application.

Code No. 941 - Projection Attachment

Makes the Fresnelspot to a wide-angle projection spot, with which glass structures, gobo and grid masks can be projected.

Ideal for small studios - requires only one item for two fields of application.



The Maxi Spot joins all those features, which make up a classical theater lamp and sunlight effects. The features of this item guarantee for perfect function even at hardest daily use. An optimum combination of high-quality components make the Maxi Spot an ideal "power support" in the studio.

Best possible light output, perfect illumination and its professional accessory range allow for universal use. Look forward to brilliant advertising shots with our Maxi Spot. With big 30 cm fresnel lens in a full metal housing. Modeling light up to 650 W. Focusing by thread mechanism, adaptation for firm fixing of accessory range. Delivered with 4-wing Barn Door!



THE LIGHT GIANT

For technical information check page 55



HENSEL
DESIGNED & PRODUCED
MADE IN
GERMANY

FRESNEL MAXI SPOT 3000/6000



[SPOTS]

WIDE ANGLE SUPERSPOT



For technical information check page 55

The Projection Spot is supplied with a white projection mirror. This slightly reduces the light capacity but additionally improves the projection quality. By means of its changing device for the mirror, the mirror can be easily changed without using any additional tool. The mask insertion can be turned by 360° and also easily be fixed. The complete housing is very hard and sturdy due to its profile structure. Fixing of the zoom lens and the item onto the bracket is effected via a very practical quick-tension-lock. The flash tube and the halogen light, which are mounted onto a folding lamp unit, can be easily exchanged. In case of a defect, this unit can be exchanged without any problems - no additional tool will be needed

WIDE ANGLE SUPERSPOT 3000 / 6000

THE WIDE ANGLE SPOT



Code No. 1500 - Gobo Holder

Metal holder for the projection of gobo masks. The gobo masks are held safe and plane and can easily be exchanged.

Code No. 301 - Holder for Grid Masks and Glasses

This holder has a U-shaped insertion for glasses (Code No. 183/1830) or grid masks (Code No. 182).

Code No. 305 - Pinhole Diaphragm

Additionally reduces any colour fringes on the borders and increases the projection quality of the spot. Included in scope of delivery with the Superspot as well as accessory for the Wide-Angle Superspot.

ACCESSORIES FOR PROJECTIONSPOTS

ACCESSORIES FOR THE PROJECTION ATTACHMENT (Code No. 624 and 6240)

Code No. 329 - Filter Frame with Filter Holder - To be fixed onto the projection attachment.

Code No. 158 - Gobo Holder - Is required for the use of gobo masks (metal masks (85 mm)). These masks are fixed by means of three punches and can easily be exchanged by pressing out.

ACCESSORIES FOR SPOTS

Code No. 154 - Gobo Metal Projection Mask - Heat-resistant and flexible, also for SUPERSPOT and Wide-Angle SUPERSPOT. Please look at our separate information page with a wide range of our actualized designs. The round design makes repositioning of Gobos easy.

Code No. 182 - Grid Masks - A set which consists of various, completely heat-resistant grid masks. By focusing or blurring and in combination with diffusion or colour gels a number of individual designs are possible. Can be used without any additional holder. Also for big projection spots to be used in combination with the glass/grid mask holder. (Code No. 301)

Code No. 183 - Effect Glasses - Used like grid masks. Especially interesting when various blurring effects are required. Therefore, the most attractive structures even "discreet" in the background can be performed. Also for big projection spots to be used in combination with the glass/grid mask holder. (Code No. 301)

Code No. 1830 - Glass with color effects, handpainted - Produces great background effects. Quick and easy, fits holder for glass and grid masks, (Code No. 301). Each glass has two painted areas and is "one-of-a-kind"! Also for big projection spots to be used in combination with the glass/grid mask holder.

ACCESSORIES FOR COMPACTSPOTS (EXPERT/CONTRA SPOTS)

Code No. 705 - Holder - For Filter Frame, Honeycomb and 4-Wing Barndoor. This holding device allows the fixing of honeycomb grids even in combination with filter holder or 4-wing barndoor to the spot.

Code No. 709 - Filter Holder - For Code No. 705 or also directly attachable. For fixing colour or diffusion gels.

Single Honeycombs

Code No. 7100 - Size 1, narrow, black, for strong accentuated, spotted and precise light guiding. **Code No. 7101 - Size 2**, narrow, black, for accentuated, concentrated light guiding.

Code No. 7102 - Size 3, medium, black, for fixed light guiding. **Code No. 7103 - Size 4**, wide, black, with little "directional characteristics".

All honeycombs have "smooth" bright/dark transitions and a better light output than a comparable narrow snoot tube.

Code No. 707 - 4-Wing Barndoor - Traditional, well-approved metal construction. Ideal for back light and side lighting as "stray light protection".

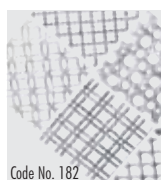
Code No. 714 - Narrow Snoot Tube - For extremely accentuated, spotted light guiding with hard bright/dark transition. Further accessories, like accent light attachment and optical adapter for fibre optic, please see STARSPOT. For fibre optical light guide application a special accessory range is available. Please see the description "STARSPOT" as these accessories are fully compatible.



Code No. 329



Code No. 158



Code No. 182



Code No. 183



Code No. 705



Code No. 709



Honeycombs





[SPOTS]

X G O B O S



Fireworks 1 7766



Snowflakes 7772



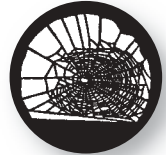
Lightning Branch 7776



Bare Branches Reversed 7778



Hearts 77093



Half Web 77130



Circular 77136



Flames 1 77175



Louvre 77215



Balloons 77303



Fireworks 3D 77365 D



Crossword 77411

X G O B O S...COOL DISKS FOR CREATIVE LIGHT PAINTING



Crackle 77418



Rectilinear 77420



Champagne 77430



Brushstroke 2 77534



Tropical Window 77542



Floral 7 77547



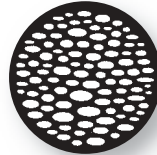
Cave Painting 77560



Glass Brick 77563



Flying Shapes 1 77565



Ellipses 77569



Pear Drops 77596



Jail Bars Shadow 77622



Street Window 77624



Venetian Shadow 77645



Geometrics 13 77648



Three Trees 77744



Shuttered Arch 77759



Shattered 2 77795



Palm Tree 77838



Midnight Show 77854



York Minster 77856



Autumnal 77857



Venetian Blind 2 77904



Jigsaw 77935



Dry Stone Wall 77951



Water 4 77958



Floating Squares 777221



Street 778027



Beach 778038



Grasses 778039



Perspective Lines 2 778047



Weave 778048



Chequered Flag 1 778050



Rose 778084



Hands 778100



Moon and Stars 778121



Stars 7 778122



Sparkles 778124



Love 778126



House of Cards 778128



Cloud Outlines 778170



Sunflower 778177



X REFLECTORS

FOR MH/MONO CONNECTION

Compatible to units of the series MONO MAX, MONO E, MH Flashhead, MH Scanlight and TWINSTAR

→ Reflectors & Accessories

- ↓
- Code No. 94** Umbrella Reflector
 - Code No. 8201** 12" Reflector
 - Code No. 9611** Honeycomb set, round, black
 - Code No. 9611** Honeycomb, round, No. 1, black
 - Code No. 9612** Honeycomb, round, No. 2, black
 - Code No. 9613** Honeycomb, round, No. 3, black
 - Code No. 9614** Honeycomb, round, No. 4, black
 - Code No. 9701** Barn Door, 4-wing with Filter Holder
 - Code No. 1790** Color and Diffusion Filter Set
- ↓
- Code No. 84** Intensity-Reflector Ø 32 cm
 - Code No. 88** Narrow Snoot Reflector Ø 10 cm
 - Code No. 8503** 22" ACW Beauty Dish MH, white
 - Code No. 8504** 22" ACS Beauty Dish MH, silver

7" Honeycombs for 22" Beauty Dish:

- Code No. 505** Honeycomb set, 20° - 40°
- Code No. 506** Honeycomb 10°
- Code No. 507** Honeycomb 20°
- Code No. 508** Honeycomb 30°
- Code No. 509** Honeycomb 40°
- Code No. 8506** 22" ACW Beauty Dish Kit

→ Honeycomb Grids, round

- Code No. 531** Ø 25 cm
- Code No. 533** Ø 31 cm
- Code No. 535** Ø 34 cm
- Code No. 537** Ø 43 cm

X UNIVERSAL CLIP HOLDER

Code No. 960 - Universal Clip Holder

Can be used with almost any reflector and easily mounts by hand via a screw. The upper side of the clamp has a metal clip for attaching special barndoors. The bottom of the clip holder is used separately for attaching gels etc. Accessories can be attached at and moved to any angle. This system can be used with compatible items.

Code No. 961
Barndoor
12 x 22 cm,
for Clip Holder

Code No. 962
Barndoor
15 x 33 cm,
for Clip Holder



Note: Due to limited space only some of the many possible variations are pictured.



[LIGHTFORMERS & ACCESSORIES]

✕ REFLECTORS

✕ REFLECTORS

FOR EH PRO/CONTRA/EXPERT PRO CONNECTION

Compatible to all units of the series EXPERT PRO, CONTRA, eFLASH, EXPERT, EH Pro Flash Head, EH Pro Mini and EHT Scanlight.

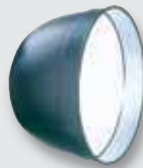
➔ Reflectors & Accessories

- ↓ **Code No. 87** Umbrella Flood Reflector
- Code No. 504** 7" Reflector
- Code No. 505** Honeycomb Grid Set round, 20° - 40°
- Code No. 507** 20° Honeycomb Grid
- Code No. 508** 30° Honeycomb Grid
- Code No. 509** 40° Honeycomb Grid not included:
- Code No. 506** 10° Honeycomb Grid
- Code No. 5044** 4-wing Barn Door with Filter Holder
- ↓ **Code No. 5064** 9" Reflector Set S/M/L
- Code No. 5060** 9" Reflector S
- Code No. 5061** 9" Reflector M
- Code No. 5062** 9" Reflector L
- Code No. 5065** Honeycomb Grid Set, round, No.1-4
- Code No. 5066** Honeycomb Grid, No.1, round, black
- Code No. 5067** Honeycomb Grid, No.2, round, black
- Code No. 5068** Honeycomb Grid, No.3, round, black
- Code No. 5069** Honeycomb Grid, No.4, round, black
- Code No. 5063** Reflector & Honeycomb Grid Set
- Code No. 7120** Colour and Diffusion Filter Set
- Code No. 1730** 4-wing Barn Door
- ↓ **Code No. 9601** 12" Reflector
- Code No. 9611** Honeycomb Grid, No.1, round, black
- Code No. 9612** Honeycomb Grid, No.2, round, black
- Code No. 9613** Honeycomb Grid, No.3, round, black
- Code No. 9614** Honeycomb Grid, No.4, round, black
- Code No. 1790** Colour and Diffusion Filter Set
- Code No. 9701** 4-wing Barn Door with Filter Holder
- ↓ **Code No. 92** Narrow Snoot Reflector
- Code No. 9201** Accent Tube
- Code No. 156** Backlight Reflector
- ↓ **Code No. 5050** 14" Reflector
- Code No. 5053** Adapter Attachment for Barn Doors
- Code No. 5052** Filter Holder
- Code No. 5051** 4-wing Barn Door
- ↓ **Code No. 847** EHT/MH Adapter
- ↓ **Code No. 8603** 22" ACW Beauty Dish EH, white
- Code No. 8604** 22" ACS Beauty Dish EH, silver
- 7" Honeycombs for 22" Beauty Dish:**
- Code No. 505** Honeycomb set, 20° - 40°
- Code No. 506** Honeycomb 10°
- Code No. 507** Honeycomb 20°
- Code No. 508** Honeycomb 30°
- Code No. 509** Honeycomb 40°
- Code No. 8506** 22" ACW Beauty Dish Kit
- Code No. 9806111** Speedring Kit complete for AC/ACB reflector (for later modification)
- ↓ **Code No. 8605** Super Focus Reflector

Code No. 87



Code No. 504



Code No. 504 with honeycomb



Code No. 5060



Code No. 5061



Code No. 5062



Code No. 9601



Code No. 5050



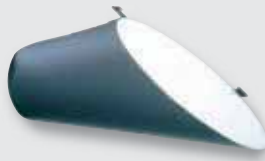
Code No. 92



Code No. 9201



Code No. 156



Code No. 1730



Code No. 1730



Code No. 8603



Code No. 8604



Code No. 8605



Code No. 847



Code No. 9806111



Note: Due to limited space only some of the many possible variations are pictured.



X SOFTBOXES



Code No. 4400



Code No. 4405950



Code No. 9701312



Code No. 4601



Code No. 4500



Code No. 9701674

Code No. 9701672

Code No. 9701673



Code No. 4490



Code No. 4000120

without Diffuser only with Inside Diffuser



Code No. 4000213

Louvers and Cloth Honeycomb Grids! Wide-spread, directional lighting is no longer a contradiction in terms! Light spills are effectively reduced without affecting the dimensions of the light. Ideal, not just for nudes and people photography. Please note that the enclosed front diffuser is needed when using the louvers. The cloth grids have elastic around the edges and can be slipped on the softbox. Note: Cloth grids and louvers are designed for use with the Softbox Type Ultra III + IV.

→ ULTRA SOFTBOXES IV

- Code No. 4480 Ultra Softbox IV 100 x 100 cm
- Code No. 4445 Ultra Softbox IV 30 x 150 cm
- Code No. 4550 Ultra Softbox IV 60 x 120 cm
- Code No. 9701671 Recessed external diffuser for Ultra Softbox 60 x 120 III + IV
- Code No. 9701672 Louvers with fastening tape for Ultra Softbox 60 x 120 III + IV
The individual segments are braced with metal poles and keep their shape!
- Code No. 9701673 Strip mask 12 x 120 cm for Ultra Softbox 60 x 120 III + IV
- Code No. 9701674 Strip louvers/blades for Ultra Softbox 60 x 120 III + IV
- Code No. 4503 Five Lightform Kit IV — consisting of Code No. 4550 + 9701671/72/73/74 without adapter ring
- Code No. 5510 Ultra Softbox IV 75 x 75 cm
- Code No. 9701311 Recessed external diffuser for Ultra Softbox 75 x 75 III + IV
- Code No. 9701312 Louvers with fastening tape for Ultra Softbox 75 x 75 III + IV
The individual segments are braced with metal poles and keep their shape!
- Code No. 4410 Ultra Softbox IV 60 x 60 cm
- Code No. 4850 Ultra Softbox IV 90 x 150 cm
- Code No. 4542 EH adapter ring for Ultra Softbox IV
- Code No. 4531 MH adapter ring for Ultra Softbox IV

The ULTRA SOFTBOXES IV and the OCTAFORM LIGHTBOXES ship without the adapter rings required for mounting on the flash units. The adapter rings are available as separate products.

→ ULTRA SOFTBOXES E

- Code No. 4601 Ultra Softbox E 45 x 65 cm, with EH adapter ring
- Code No. 3009090 Ultra Softbox E 90 x 90 cm, with EH adapter ring
- Code No. 3080100 Ultra Softbox E 80 x 100 cm, with EH adapter ring

→ OCTAFORM LIGHTBOXES

All Octaform lightboxes ship without adapter ring!

- Code No. 4000060 Octaform Lightbox 60
- Code No. 4000090 Octaform Lightbox 90
- Code No. 4000120 Octaform Lightbox 120
- Code No. 4000150 Octaform Lightbox 150
- Code No. 4000213 Octaform Lightbox 200
- Code No. 4000300 Adapter ring Expert, Contra, Contra E, Expert Pro, EHT, EH Pro, Porty etc.
- Code No. 4000800 Adapter ring MH, Monomax
- Code No. 4000254 Octaform Double — diameter ~2.5 m
- Code No. 4000255 Adapter ring Expert, Expert Pro, EH Pro etc.



X UMBRELLAS

FOR MH/MONO AND EH PRO/CONTRA/EXPERT PRO

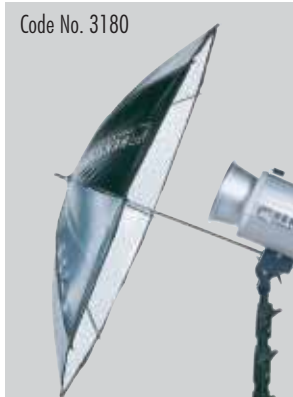
Code No. 103



Code No. 104



Code No. 3180



Code No. 106



Code No. 98



Code No. 101



Code No. 99



Code No. 3180

Economy White Ø 82 cm

Code No. 98

Master White Umbrella Ø 80 cm

Code No. 99

Master White Umbrella Ø 105 cm

Code No. 104

Translucent Umbrella Ø 80 cm

Code No. 103

Translucent Umbrella Ø 105 cm

Code No. 101

Ultra-Silver Umbrella Ø 105 cm

Code No. 106

Softstar Ø 105 cm

without adapter plate

Code No. 110

Adapter plate to mount Softstar to MH Heads and MONO MAX

Code No. 792

Adapter plate to mount Softstar to CONTRA/EXPERT PRO/EH PRO

Code No. 4107923

Jumbo Umbrella 2 m, silver/black

Delivered with angle joint and sandbag.



Test setup: For expressive shadows, the doll was placed very close to the background, with an ExpertPro compact flash as the only light source coming diagonally from the front. All shots were made under identical conditions. The flash was positioned at a distance of 2 m from the doll. Aperture data are given for a 500 J unit at full power. The photos were shot at 1/125 s and f 8.* *Flash power was appropriately reduced for the photos.

✕ THE HENSEL REFLECTORS

Ideally adapted to the flash tubes and modelling lights of HENSEL flashes, each reflector is a specialist in its own area. All reflectors are heavy-duty units made of metal. Their flanged rims ensure excellent stability and durability. With some reflectors, honeycomb grids can be directly mounted on specially shaped front lips. The reflectors are an integral part of the comprehensive HENSEL system. This means that at identical diameters, accessories can be mounted on different reflectors. The same is true of mounting diameters. An example: the EH diameter (Ø 10 cm) is used by compact units, Porty flashes, Scanlights and EHT flash heads up to 6000 J — maximum compatibility! You can find the full range of our reflectors in the current HENSEL price list and the catalogue.



⬆ Code No. 87 - Umbrella Flood Reflector

Used with umbrellas (except for SoftStar), it reduces undesirable light scatter and ensures optimum light conditions. This reflector provides a very wide-angle and evenly distributed light. You can use it without umbrellas too; it is equally suited for direct (hard) light or indirect lighting over walls and ceilings.

Reflector inside surface: silver, Ø 13 cm.

Aperture: 16.3 @ 2 m & 500 J.



⬆ Code No. 504 - 7" Reflector

Small, with very uniform light distribution. Clip-in honeycombs (0, 1, 2 and 3) make variable lighting affordable. An optional 4-wing barn door (Code No. 5044) with sheet holder provides light scatter protection.

Reflector inside surface: silver, Ø 17 cm.

Aperture: 22 @ 2 m & 500 J.



⬆ Code No. 5060 - 9" Reflector S

There are 3 different lengths of 9" reflectors available, with similar characteristics and very even light distribution over their entire reach. Their diameters being identical, they can share the same accessories. Available accessories: 4 circular clip-in honeycombs and a 4-wing barn door with sheet holder, Code No. 1730.

Reflector inside surface: silver, Ø 23 cm.

Aperture: 32.5 @ 2 m & 500 J.



⬆ Code No. 9601 - 12" Reflector EH

Similar to the 9" reflectors, but stronger centre focus and consequently more light fall-off towards the edges. The accessories can also be attached to the 12" reflector with MH mount.

Accessories available: 4-wing barn door with sheet holder, Code No. 9701 and 4 clip-in honeycombs.

Reflector inside surface: silver, Ø 30 cm.

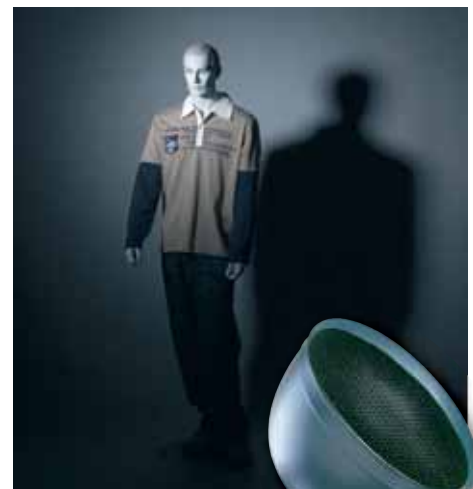
Aperture: 45.4 @ 2 m & 500 J.

Code No. 9613 - 12" Honeycomb 3 ➡

Honeycombs are ideal tools if you want narrow-angled light while keeping loss of power at a minimum. As a principle, it can be said that the light's focus on the centre increases with the density of the honeycomb grid. Honeycomb types (increasing from narrow to wide): 1, 2, 3 and 4. The honeycombs' characteristics also vary with the reflectors they are mounted on.

Reflector inside surface: silver, Ø 30 cm, honeycomb size 3 in black.

Aperture: 45.1 @ 2 m & 500 J.





X THE HENSEL REFLECTORS



Code No. 5050 14" Reflector

An extremely light-efficient reflector. Its particularly narrow angle makes it the ideal tool for long-distance lighting. Whether you are shooting fashion at the beach with a telephoto lens or stucco details on a high ceiling, the 14" reflector makes the most of the available flash power.

*Reflector inside surface: silver, Ø 34 cm.
Aperture: 64 @ 2 m & 500 J.*



Code No. 8603 22" ACW Beauty Dish EH

A classic with new and fascinating possibilities. The cap at the centre is held in place by an entirely new mechanism. This allows you to exchange the cap for circular honeycombs (also fitting on 7" reflectors) without any tools. In addition, you can apply filter sheets. These innovations open up new ways of lighting. With cap: soft and very even, slightly warmer in character. With honeycombs: soft base light with varying focus on the centre depending on the honeycomb used. Two types of light from the exact same direction, from a single reflector! Ideal for people and fashion!
*Reflector inside surface: white, Ø 56 cm.
Aperture: 11.3 @ 2 m & 500 J.*



Code No. 8604 22" ACS Beauty Dish EH with honeycomb Code No. 509

Like Code No. 8603, but shiny silver inside surface. Gives a more brilliant and directional light.
*Reflector inside surface: silver, Ø 56 cm.
Aperture: 22.8 @ 2 m & 500 J.*



Code No. 92 Narrow-angle Reflector

For a considerable narrowing of the light circle. Its effect is similar to a honeycomb, but provides a well-defined border from light to darkness. Considerably lower light efficiency compared to honeycombs and Accent tubes.

*Reflector inside surface: black, Ø 10.5 cm.
Aperture: 11.2 @ 2 m & 500 J.*



Code No. 9201 - Accent Tube

The new Accent tube compares very favourably to the popular narrow-angle reflector thanks to its considerably higher light efficiency and an extremely homogeneous but still accented light distribution. The narrow lighting angle is ensured by a micro-honeycomb inside the reflector. The honeycomb's silver surface provides for additional light diffusion, ensuring homogeneous, highly natural lighting without visible gradients.
*Reflector inside surface: black, Ø 10.5 cm.
Aperture: 22 @ 2 m & 500 J.*



Code No. 156 BACKLIGHT Reflector

Ideal when space constraints e.g. in a passport photo booth force you to fire the flash upwards right behind the model. This reflector is shipped with 2 filter mounts.

*Reflector inside surface: white, approx. 17.5 x 28 cm.
Aperture: 22 @ 2 m & 500 J.*



X THE HENSEL SOFTBOXES

Your first choice for brilliant, homogeneous light and/or appealing mirror effects. All boxes offer extremely homogeneous light dispersion combined with maximum efficiency. They are very easy to take apart. Varying with the individual types, the boxes are equipped with internal and external diffusers. You can choose between very different light effects depending on whether you work with or without these diffusers. An interesting detail: Like any other reflector, the softboxes can be rotated by 360° on their mounts. The Octaform Lightboxes are particularly suited for people and portrait shoots by virtue of their extreme flatness and their octagonal shape. A highlight offering unbeatable versatility: the new Ultra softbox IV 60 x 120 cm with dedicated accessories. You can find the full range of our softboxes in the current HENSEL price list and the catalogue.



↑ Code No. 5510

Ultra Softbox IV 75 x 75 cm

Medium-sized quadratic box suited for the majority of applications. Very even light distribution and good light efficiency. A black rim and a homogeneous light distribution allow for well-defined mirror effects.

With internal and external diffuser.

Accessories: Recessed external diffuser and louvers.

Aperture: 11.2 @ 2 m & 500 J.



↑ Code No. 4550

Ultra Softbox IV 60 x 120 cm

The all-rounder among the softboxes! Apart from the virtues common to all HENSEL softboxes, the Ultra Softbox III has the added advantage of an exceptional range of accessories.

The optional recessed external diffuser, Code No. 9701671, provides a sharper light and protection against light scatter. It is also required for the use of the louvers. The louvers, Code No. 9701672, considerably reduce lateral light scatter, focusing the light on the centre. For stronger effect, you can use the strip mask, Code No. 9701673, converting the box into a 10 x 120 striplight. If this is still not enough, the strip louver Code No. 9701674 allows you to further minimise the lighting angle. All these modifications do not affect the light output length of 120 cm!

With internal and external diffuser.

Accessories: Recessed external diffuser and louvers.

Aperture: 11.4 @ 2 m & 500 J.

The Ultra Softbox IV 60 x 120 cm is also available with all accessories as Item 4503 Five Lightform Kit.



↑ Code No. 4000213

OCTAFORM Lightbox 200

An octagonal box with very even light distribution and excellent light efficiency. The OCTAFORM also allows you to work with or without internal and external diffusers.

A great secondary use: after removing the diffusers you can fire a flash from behind the box through the resulting hole, using the box as a gigantic ring flash. This possibility is offered by all HENSEL OCTAFORM boxes! The enormous light plane provides almost shadowless light.

With internal and external diffuser.

Accessories: Speed Ring required for EH / MH.

Aperture: 16 @ 2 m & 500 J.



X THE HENSEL UMBRELLAS

Their classical "brolly mechanism" recommends them for quick jobs. Their affordability and versatility makes them an integral part of a photographer's equipment. We recommend the umbrella flood reflector (Code No. 87, EH) and the tube reflector (Code No. 94, MH) for use with our umbrellas. They are required for optimum light distribution. Depending on the desired effects, the big umbrellas can also be combined with other reflectors. You can find the full range of our umbrellas in the current HENSEL price list and the catalogue.



↑ Code No. 99

Master Umbrella white 105

It has been the first choice for decades whenever soft light and soft shadows are required, whether for portrait or fashion, whether as a main light or a fill light. The white inside surface gives skin a particularly agreeable tone. Very solid structure and heavy-duty fabric for extended durability.

Approx. Ø 105 cm, shipped with umbrella bag Code No. 991.

Adapter plate required for EH/MH.

Aperture: 11.3 @ 2 m & 500 J.



↑ Code No. 106 - Softstar 105

The Softstar combines the advantages of both umbrellas and softboxes: it is as easy to set up as an umbrella, but it provides the soft but at the same time brilliant light appreciated in softboxes. Its very wide-angled light distribution makes it ideal for short lenses. The flash is fired through the umbrella. A black/silver reflecting fabric shields the unit from the umbrella. This increases light efficiency in comparison with conventional umbrellas.

Very solid structure and heavy-duty fabric for extended durability.

Approx. Ø 105 cm, shipped with umbrella bag Art. 991.

Aperture: 11,9 m & 500 J.



↑ Code No. 4107923

Big Umbrella 200

It's not just big — it's simply great when shadowless, even light is required on a large surface. Despite its size, it is very easy to set up and stow away. Ideal for large-surface even light on location.

Big Umbrellas are also available with 2 m and 3.75 m diameters, both with silver coating.

Very solid structure and heavy-duty fabric for extended durability.

Approx. Ø 200 cm, ships with umbrella bag and small pivoting clamp

Aperture: 11.5 @ 2 m & 500 J.





[STANDS & STUDIO ACCESSORIES]

X LIGHT STANDS

Code No. 201 - Alu Stand II

2 extensions, Maximum height: 250 cm (98.43"), Minimum height: 88 cm (34.65")
109 cm (42.9") diam., Packaging: 86 cm (33.86")
Net Weight: 1.28 kg (2.82 lbs.), Capacity up to 5 kg (11 lbs.)
Caster Set: Code No. 196

Code No. 200 - HENSEL Alu Stand III

3 extensions, maximum height 210 cm, minimum height 69 cm,
diameter 93 cm, storage size 73 cm, net weight 1.25 kg,
supports up to 4 kg

Code No. 8004BAC - Alu-Stand IV, air cushioned

3 extensions, Maximum Height: 385 cm
Minimum Height: 109 cm, 109 cm, Packaging: 107 Ø cm
Net Weight: 2,15 kg, Capacity up to 9 kg
Caster Sets: Code No. 198, 9800450 u. 9800460

Code No. 257 - Crank Stand

Maximum height: 247 cm (97.24"), Minimum height: 139 cm (54.72")
128 cm (50.39") diam., Packaging: 153 cm (60.24"),
Net Weight: 17.5 kg (38.57 lbs.), Capacity up to 45 kg (99.18 lbs.)

Code No. 195 - Steel Stand with casters

1 extension, Maximum height: 215 cm (84.65"), Minimum height: 134 cm (52.76")
118 cm (46.46") diam., Packaging: 116 cm (45.67"), Net Weight: 7.5 kg (16.53 lbs.)
Capacity up to 30 kg (66.12 lbs.)

Code No. 80626BU - Steel Stand HD

2 Extensions, Maximum height: 330 cm, Minimum height: 153 cm
126 cm, Packaging: 131 cm, Net Weight: 8.3 kg
Capacity up to 40 kg, Special feature: very sturdy stand, great
for combining with the HD boom.
Matching casters: Code No. 9800460 and 9800450

Code No. 223 - HENSEL Alu Stand VI

2 extensions, air-cushioned, maximum height 280 cm, minimum height 105 cm,
net weight 2.6 kg, supports up to 9 kg



X HENSEL LIGHT STANDS



[STANDS & STUDIO ACCESSORIES]

X LIGHT STANDS

X LIGHT STANDS

Code No. 8000420 - Alu Stand/Boom Stand

The integrated angle joint allows the use of the upper two extensions as a telescopic boom. 3 extensions. Net Weight: 2.7 kg, maximum height (stand): 329 cm, minimum height (stand): 131 cm, maximum boom extension: 191 cm, minimum boom extension: 117 cm, maximum capacity of the boom at maximum extension: 2 kg, at minimum extension: 9 kg, including sandbag, Caster Set: Code No. 198

Code No. 8420STU - Foldable Steel Stand/Boom Stand

as Code No. 8000420

Stand legs and column made of stainless steel. The two upper extensions are made out of reinforced aluminium. Weight: 5,6 kg, maximum capacity of the boom: 5 kg (an additional sandbag is needed).

Code No. 426 - Extension Pole for Steel Stand

Extendable from 125 cm (49.21") up to 210 cm (82.68"), with 28 mm (1.1") stud for stand mounting. Net weight: 3.6 kg (7.93 lbs.)

Code No. 208 - Stand Base with collapsible legs

Height: 28 cm (11.02"), 100 cm (39.37") diam. Packaging: 52 cm (20.47") Net Weight: 5.7 kg (12.56 lbs.), capacity up to 40 kg (88.16")

Code No. 199 - Column Stand

with casters, adjustable bracket and foldable legs. 35 mm (1.4") steel column, collapsible. maximum height: 250 cm (98.43"), minimum height: 35 cm (13.78") 100 cm (39.37") diam. Packaging: 121 cm (47.64") - column collapsed, net weight: 7.5 kg (16.53 lbs.), capacity up to 8 kg (17.63 lbs.)

Code No. 203 - Floor Stand only 9 cm high (3.54"),

with extension (Code No. 204), a height up to 85 cm (33.46") can be achieved.

Code No. 211 - Extension Arm

for 35 mm (1.38") column diameter extendable from 28 cm (11") up to 50 cm (19.7")

Code No. 215 - Extension Arm

for 35 mm (1.38") column diameter 28 cm (11") length.

Code No. 798 - Extension Arm

for 35 mm column diameter

Replacement for Stand Code No. 199, or for individual designs.



X CASTER SETS



Code No. 196 - Caster Set, without brake
for collapsible stands column diameter 19 mm (0.75"),
3 pcs., 0.45 kg (0.99 lbs.)



Code No. 198 - Caster Set, without brake
for collapsible stands column diameter 22 mm (0.87"),
3 pcs., 0.54 kg (1.9 lbs.)



Code No. 113 - Caster Set 80 mm
(3.15") diam. without brake, for collapsible stands
with M10 thread 3 pcs., 1.24 kg (2.73 lbs.)



Code No. 9800450 - Caster Set 80 mm
(3.15") diam. without brake, for collapsible stands
column diameter 22 mm (0.87"), 3 pcs., 1.43 kg (3.15 lbs.)



Code No. 9800440 - Caster Set 75 mm
(2.95") diam. with brake, for collapsible stands
with M10 thread, 3 pcs., 1.5 kg (3.31 lbs.)



Code No. 9800460 - Caster Set 75 mm
(2.95") diam. with brake, for collapsible stands
column diameter 22 mm (0.87")
3 pcs., 3 kg (6.61 lbs.)



X STUDIO LIGHTING STANDS

Code No. 209 - Heavy Duty Floor Stand

With casters, HD stand for high capacities and work low to the ground.
3/8" stud, Height: 10 cm (3.94") diameter: 41 cm (16.14")
Weight: 1.6 kg (3.53 lbs)

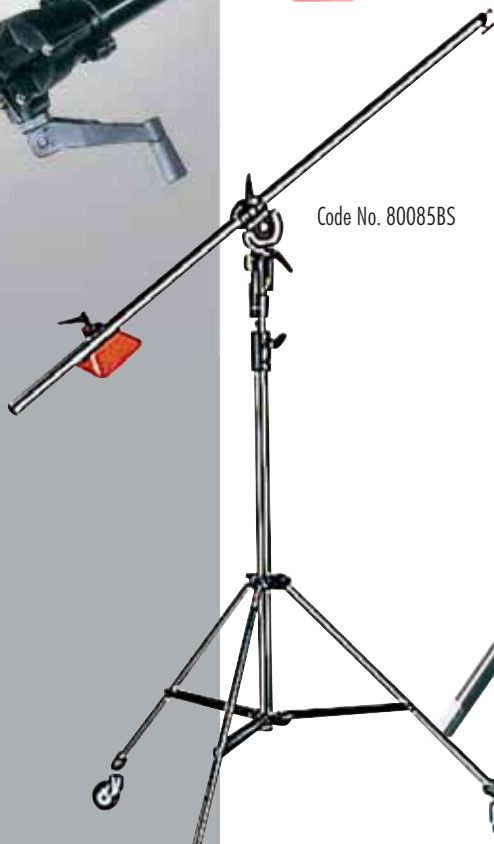
Code No. 209



Code No. 246



Code No. 80085BS



X BOOMS

Code No. 246 - Super Boom

Two cranks for adjustment. 35 mm (1.38") diam.
Aluminium column, 270 cm (106.3") length.
Complete with steel stand with wheels (Code No. 195),
pivoting joint, cable clips and counterweight.
Netweight incl. stand: 21.1 kg (46.5 lbs)
Additional counterweight 6.7 kg (14.77 lbs) Code No. 210

Code No. 8000851 - Light boom

(085BSL) 35 mm black tube, without stand,
with counterweight & pivoting collar

Code No. 80085BS - Light boom

(085BS) 35 mm black tube, with black chrome stand,
counterweight & pivoting clamp

Code No. 8000851





X QUICK RELEASE PLATES

Code No. 315 - Quick release plate, Model 1, with 3/8" thread, screws on.

Code No. 314 - Camera Plate for quick release plate, Model 1, with 1/4" camera screw.

Code No. 312 - Camera Plate for quick release plate, Model 1, with 3/8" camera screw.

An addition to all camera pan-heads are the **HENSEL quick release plates**. These plates allow a quick camera change without the trouble of tightening screws. Simply loosen the locking screw and the camera easily slides out of the holder. However, a safety mechanism prevents the camera from slipping off the holder unintentionally. The design of the quick release plates is compatible with the rail design of the HENSEL Frontprojection and thus allows a quick change from Frontpro to stand.



X FLASH METER

Code No. 327 - Polaris 1

Code No. 39500EL - Polaris 2

Code No. 3009900 - Polaris dual 5

All light meters can measure both ambient and flash light (!) at different shutter speeds. Both incident and reflected measurements are possible. The measurement and processing of values as well as the display are fully digital. All light meters have a large liquid crystal display providing simultaneous information on metering mode, shutter speed and aperture (with an accuracy of 1/10 stops). Both incident and reflected metering available. The Polaris 5 also offers 5° spot metering. Metering range: ambient light EV 1 – EV 19.9, flash f2 – f90.9 in 1/10 increments. Aperture range: f0.5 – f90.9. Shutter speed range: 60 s – 1/8000 s (ambient light) and 1 s – 1/500 s (flash). Several special speeds available. Sensitivity range: ISO 3 – ISO 8000. Cumulative flash mode and exposure compensation available. The Polaris Dual 5 and Polaris 2 have a backlit display. A detail for everyday ease of use: All light meters are powered by a single AA battery. Scope of supply: light meter, battery and belt bag.



Accessories for Polaris 1 and 2:

Code No. 39500FD - flat diffuser

Code No. 39500VF - 10° spot attachment

X HENSEL CAMERA STAND

Code No. - 2310 Studio Camera Stand, black

Robust, solid, tried and tested and user-friendly. The new HENSEL camera stand is made from a special drawn aluminium profile which combines excellent strength with extremely low vibration and low intrinsic weight. The adjustable cross strut can hold two cameras. The stand is suitable for use with all types of camera up to and including lightweight large-format cameras. A heavy T-base with two adjustable wheels provides a stable footing, while the fixed shelf ensures tidiness and manageability. The counterweight integrated into the column makes it easy to work even with heavy cameras.

Total height: approx. 2 m. Intrinsic weight: approx. 30 kg





CLAMPS & STUDIO ACCESSORIES

**Code No. 135 - Fix Clamp**

A universal clamp, which can be mounted on or to stands, poles, boards, ladders and many other objects. Opening width: 13 mm (0.51") up to 55 mm (2.17"). Supplied with 3/8" stud for mounting to stand (Code No. 431). A camera can be mounted directly onto the clamp via a camera stud (Code No. 480). Weight: 0.41 kg (0.9 lbs.)

**Code No. 137 - Extension Arm**

Extension with mounting stud for fix clamp. Length: 19.5 cm (7.68") Weight: 0.21 kg (0.46 lbs.)

**Code No. 421 - Double Fix Clamp**

Consists of two fix clamps, which are connected by two screws. The connection can be separated by using a locking key. The clamps are connected at a 90° angle to each other. Weight: 0.83 kg (1.83 lbs.)

**Code No. 218 - SKY HOOK**

A practical spring clamp with adjustable clamp opening (25-65 mm - 0.98"-2.56") Weight: 0.65 kg (1.43 lbs.)

**Code No. 8000043 SKY HOOK Kroko-Clamp**

A spring clamp with adjustable clamp opening (25-65 mm). Additionally 2 fixed stud.

**Code No. 8000175 - Spring Clamp**

medium strength clamp with a stand connector casing on the bottom.

**Code No. 131 - Multiclip Clamp**

Two clamps 7cm (2.76") and 9 cm (3.54") connected by a wire bracket. Used to fix color or diffusion gels, etc.

**Code No. 433 - Connector stud**

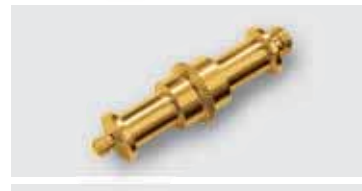
Two fix clamps can be connected parallel to each other or connected in 5 further ways.

**Code No. 4331 - Joining Stud**

for fix clamps that have 90° angles or in 45° intervals.

**Code No. 431 M-Threaded Stud**

with 3/8" thread for fix clamps.

**Code No. 432 - Adapter stud**

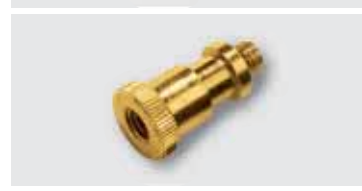
3/8": 1/4"
Code No. 4320 - Double stud
hexagon version (no image)

**Code No. 480 - Camera Bolt**

for fix clamp with 1/4" and 3/8" thread. Allows direct mounting of camera and panning heads to the clamp.

**Code No. 405 M-Threaded Stud**

with 3/8" thread and 29.5mm bottom thread!

**Code No. 139 M-Threaded Stud**

with 3/8" thread and 3/8" drilling.

**Code No. 8000151 M-Threaded Stud**

with 1/4" thread and 3/8" drilling.

**Code No. 422 Pair of U-shaped hooks**

round

**Code No. 423 Pair of U-shaped hooks**

angular

**Code No. 424 Pair of L-shaped hooks****Code No. 8000171 Universal Clamp**

for poles and plates up to 35mm thickness. Base diameter 5/8"



[STANDS & STUDIO ACCESSORIES]

ACCESSORIES

CLAMPS & INDISPENSABLE STUDIO ACCESSORIES



Code No. 250 - Magic Arm

Holding arm with central locking for all three joints. With 1/4" and 3/8" thread hole in the mounting studs at each end. Solid and very flexible arm for universal use. Length: 50 cm (19.7") Weight: 1.07 kg (2.36 lbs.)

Code No. 8002441

Magic Arm with large

position locking screw. Without accessories, otherwise like Code No. 250.

Code No. 243 - Magic Arm Set

Consists of a Magic Arm with Fix Clamp, Floor Stand and Camera Bracket. Weight: 2.55 kg (5.62 lbs.)



Code No. 252

Lite-Tite Stand Joint

A tilting joint with integrated umbrella holder (up to 12 mm (0.47") diam.). Includes two mounting studs with 1/4" and 3/8" thread or socket. Weight: 0.32 kg (0.71 lbs.)



Code No. 430 - Heavy U-Base

Collapsible U-base. Solid metal construction. Base diameter up to 48 cm (18.9") Weight: 2.2 kg (4.85 lbs.) Accessories: Adapter stud (Code no. 432) for attachment of flash heads, etc.



Code No. 244

Fork for Magic Arm

To attach light reflectors (styrofoam, etc.). The photographer's third arm.



Code No. 429

Table Top Arm with Joint

Light weight, handy arm has three turning joints which can be locked into place via screws. Ideal for table top photography, especially for attaching light reflectors, fibre optics, etc. Length: 60 cm (23.62")



Code No. 694

Table Stand, round

Lightweight, metal stand with 3/8" mounting stud. 15 cm (5.91") diam. Weight: 0.6 kg (1.32 lbs.)



Code No. 694 - Table Stand, round,

Code No. 695 - Table Stand, round, with a 32 cm (12.6") flexible arm.

BRACKETS



Code No. 539

Bracket with stud

23 cm (9.1") extension, with a 3/8" stud. Square (side length 10 cm (3.94")) base plate with four holes. Color: white



Code No. 540

Bracket with stud

12 cm (4.72") extension, with a 3/8" stud. Square (side length 10 cm (3.94")) base plate with four holes. Color: white



Code No. 541

Bracket with mounting shell

Holds a 3/8" stud. Square (side length 10 cm (3.94")) base plate with holes. Color: white.



Code No. 542

Bracket with 3/8" stud

For attachment of flash units directly to wall or ceiling. Square base with four holes (side length 10 cm (3.94")). Color: white

ACCESSORIES



Code No. 20200 - Velcro-Strips

(2 pcs. per package) Cable holders with velcro. Ideal for system and sync cords, too.

HENSEL Reflector Sprays

All spray cans contain environmentally friendly propellents. The colors withstand high temperatures and do not contain annoying brighteners.

Code No. 323 - Reflector Spray, black

For outer reflector surfaces

Code No. 321 - Reflector Spray, silver

Code No. 322- Reflector Spray,

white titan dioxide





AUTOPOLES

AUTOPOLES are telescopic, variable length poles, which can be quickly and easily clamped between two sturdy surfaces. They can be used as holders for backgrounds, lamps, flash equipment, accessories and much more.

Code No. 247

1 Pair of Autopoles

A two piece clamp pole with clamping and locking lever. Extendable from 2,1 m (6.9 ft.) up to 3,7 m (12.1 ft.) Pole diameter: 45 mm (1.77") and 40 mm (1.57") Weight: 2,6 kg (5.7 lbs.)



Code No. 8000432

1 Pair of Autopoles

Grip-integrated safety lock. Loosen the autopole/grip by pulling the lever down and out. A very safe and practical locking technique. Otherwise, same design as Code No. 247

Code No. 278

Autopole Extension 2 m (6.6 ft.)

Extension pole 40 mm diameter (1.57"), to insert into the top portion of the autopoles. Weight: 0,53 kg (1.1 lbs.)

Code No. 254

Base for Autopoles

Base diameter: 126 cm (49.6"), Length: 86 cm (33.86"), Weight: 1,2 kg (2.64 lbs.)

ACCESSORIES

Code No. 242

Portrait chair with rockers

Stable seat with washable material cover, can be adjusted to any height using pneumatic springs. Very robust black plastic. Special feature: a ring all round the seat is used to unlock the height adjustment. Min. height 53 cm, max. height 78 cm.



ROUND REFLECTOR SYSTEM

FIVE IN ONE - 5 reflectors in one. The unit is based on a folding round reflector with a steel frame covered with a diffuser material. There is an additional cover which can be turned rapidly using a zip. The cover has 4 different surfaces: silver, black, white and sunlight. The sunlight side is perfect for portrait shots, as it combines the benefits of a silver and a gold surface, i.e. high reflectivity and a pleasantly warm colour tone. Supplied: Basic frame with diffuser cover, 4-sided replacement cover. All packed in a sturdy nylon bag.

FIVE IN ONE round reflectors

Code No. 3000220 FIVE IN ONE 56 cm (21 cm)

Code No. 3000320 FIVE IN ONE 82 cm (29 cm)

Code No. 3000420 FIVE IN ONE 107 cm (40 cm)

Values in () = packing size

Code No. 3003648 FIVE IN ONE 92 x 122 cm (43 cm)

Code No. 3004066 FIVE IN ONE 102 x 168 cm (57 cm)

Values in () = packing size

White / Sunlight round reflectors

Like the FIVE IN ONE round reflectors, but without the additional cover. The material is joined to the frame. One side is white, the other is sunlight (silver/gold). Supplied in a bag.

Code No. 3000211 white / sunlight 56 cm (21 cm)

Code No. 3000311 white / sunlight 82 cm (29 cm)

Code No. 3000411 white / sunlight 107 cm (40 cm)

Values in () = packing size

Code No. 4101109 - Stand for round reflectors

Lightweight stand to hold round reflectors. Two sprung clips hold the reflector securely at the top and bottom. Max. height: 2.6 m, suitable for all reflectors.

Code No. 4101100 - Universal holder

for round reflectors up to 120 cm. Holder with telescopic rails and ball and socket joint. Two sprung clips hold the reflector securely onto the steel frame at the top and bottom. The ball and socket joint means the reflector can be adjusted into almost any position. With steel stand sleeve for all stands with M stops.



REFLEX/DURCHBLITZWÄNDE

Special versions possible!

Made of durable aluminium bar surface of reflection: 100 x 200 cm (also available in the sizes 130 x 200 cm and 200 x 260 cm).

Code No. 259

Swivel panel with wheels

The reflector panel can be swivelled and set at any angle by simply turning two screws. The frames can also be covered on both sides. Choose reflecting or diffusion materials. This technique makes this an extremely flexible light guiding system.

Code No. 263 - Black/Silver

fabric cover, ideal for reflecting or reducing light.

Code No. 264 - Transparent

fabric cover, best for large surface reflections or to soften harsh light sources.





X BACKGROUND SYSTEM

The HENSEL STH-Background system can be either mounted on the wall or ceiling. An alternative would be to mount the system on stands with wheels (Code no. 463). The system's primary elements are the triple ceiling or wall hooks, the 50 mm (1.97") diameter steel shafts with easy exchange mechanism and the required plastic chains. Metal chains are optional.

Each shaft can be adjusted individually for the amount of tension on the pull. The system has been designed for possible expansion and becomes electric simply by adding motors which can be slid into the shafts and screwed on tightly. These shafts can then be controlled either by a switch box and cable or with an infrared remote. The motorized system has an adjustable cut out for an end stop.

All brands of background paper - with or without cardboard core - in the regular width of 2.72 m (9 ft.) can be mounted onto these background shafts. Also, steel shafts are available for background paper with 3.55 m (11.65 ft.) width.

Code No. 461 for 2.72 m paper **STH-Background System**

A manual system with 3 steel shafts 50 mm (1.97") diameter, plastic chains, brake, chain protector, and triple wall/ceiling hook. Code No. 4610 for 3.55 m paper.

Code No. 462 **STH-Background System, motorized**

A motorized background system with 3 steel shafts 50 mm (1.97") diam., end cut out, switch box, and triple wall/ceiling hooks.



Code No. 463 for 2.72 m paper

STH-Background System, on four casters. A manual system with 3 steel shafts, 50 mm (1.97") diameter, plastic chains, brake, chain protector, and two stands with wheels. Total height: ca. 2.8 m (10.5 ft). Other heights available.

This mobile background system is the ideal solution for studios which need flexibility.

One person can move the entire system simply by rolling it to the desired location. The system is also easy to disassemble, therefore, making it easy to use on location.

Code No. 4630 like Code no. 463 yet for 3.55 m paper



Code No. 466 - Steel shafts 50 mm (1.97")

diameter, incl. accessories (2.9 m)

Code No. 473 - Metal chain

for manual background system

Code No. 467 - Steel shaft, motor driven

Code No. 469 - Switch box

for up to 3 shafts, with cable

Code No. 470 - Assembly kit

for upgrading a manual shaft to a motorized shaft

Code No. 465 - Set of wall/ceiling triple hooks

graduated hooks

Code No. 479 - Set of ceiling triple hooks

hooks of equal length

Code No. 471 - Weight Rod

for background paper (2,7m)

Code No. 4710 - Weight Rod

for background paper (3,5m)





X EXPAN - SYSTEM

The affordable rolling and unrolling equipment for background paper!

Ideal for quick set-up on location or for temporary studio use.

Code No. 924 - Portable Background System

for 1.35 m (4.4 ft.) wide, Colorama paper. Consists of: 2 stands (height up to 2.5 m (8.2 ft.)), 1 pair of shaft holders (Code No. 925), 1 pair of EXPAN (Code No. 249) and a bag for stands (Code No. 298). The picture shows the background system with a frontprojection screen COMBISCREEN 1.3 x 1.8 m (4.2 x 5.9 ft.)



Code No. 249



Code No. 248



Code No. 427



Code No. 925



Code No. 249 - 1 Pair of EXPAN mountings

for window-shade system backgrounds. EXPAN holders insert directly into the cardboard core of background rolls. The expansion mechanism ensures secure fastening. Includes plastic chain and chain guard. Has a free adjustable break for regulating the tension.

Code No. 2490 - 1 Pair of EXPAN mountings including metal chain

Code No. 248 - 1 Pair of triple hooks with clamps

Code No. 427 - 1 Pair of single hooks without clamp.

Can only be used with fix clamps. For EXPAN or HENSEL steel shafts.

Code No. 925 - 1 Pair EXPAN holders for stands

(can be used for steel shafts too). The holders fit all HENSEL stands.



Code No. 474

Code No. 8000314

X SIMPLE BUT GOOD

Code No. 8000314 - Portable Background System

Consists of 2 stands and 1 telescope bar in a special bag. Easy to transport, ideal for the use with cloth backgrounds. Weight: 4kg, max. height 2,7m, width from 1,6m to 3m, packaging: ca. 1,1m.

Code No. 4101119 - Extension Pole, single,

for use with existing stands, fix clamps with studs etc. Fits on all 3/8" MA threaded studs of studio stands. Variable width from ca. 1.15 m to 3 m sliding adjustment. Packaging ca. 1.15 m

Code No. 474 - U-Holder

for fastening (3/8" thread) to stands. Lowers backgrounds carefully due to small transport rollers!



[STANDS & STUDIO ACCESSORIES]

X ACCESSORIES

X SLAVES



Code No. 177 - External Mini Slave

Connectable to any sync cord. Ideal for firing electronic flash units or via sync cord for reliable firing of "hidden" studio flash units. The integrated electronic switch guarantees highest sensitivity. Supplied with suction cup. Also, used as replacement for Frontpro Vario Compact 3's slave.

Code No. 81 - Monocell Slave

Attachable photo slave with 6.3 mm phone jack. The integrated electronic switch guarantees highest sensitivity. Additionally available: extension cord (code no. 199 - one side 6.3 mm socket, other side sync plug), length: 3 m.

X FLASH TRANSMITTERS

Code No. 3952 - New HENSEL radio remote trigger & remote control STROBE WIZARD PLUS

HENSEL's new RC/ RF radio remote triggering and flash control unit is the perfect solution! It combines radio triggering, modelling light activation* and flash power control* into one single compact device. The transmitter is small, light and easily mounted on the accessory shoe! As an alternative you can also use the short sync cable supplied. The transmitter offers a host of further benefits: A synchronisation voltage of only 6 V makes it ideally suited for digital cameras. The availability of 3 channels prevents interferences between different workgroups within the same studio. On channel #4 (master channel) all devices can be controlled simultaneously, regardless of the channel they are set to. The external receiver is powered by three standard AA batteries (alkaline or rechargeable) and is connected directly to the sync socket of a (HENSEL) flash. Since the unit detects automatically whether the flash is on or off, a separate power switch is not required. No need to worry about empty batteries just because you have forgotten to push the OFF button. As a matter of course, you can also trigger third-party flashes with our remote control (please contact us for details). Both the transmitter and the receiver are protected by an extremely solid plastic housing. The transmitter has a minimum battery life of 1 to 2 years! *The true highlight of this transmitter is no doubt the possibility of remotely adjusting flash power and activating the modelling light via the Up/Down buttons on heads equipped with built-in receivers. Currently, these functions are only available with the PORTY Premium Plus, PRO MINI 1200 AS and the HENSEL EXPERT Pro Plus.

Code No. 3952 1 transmitter, 1 receiver, 1 sync cable (short) & batteries.

Code No. 3950 1 transmitter w/ batteries, 1 sync cable (short)

Code No. 3951 1 receiver w/ batteries

Replacement batteries:

Code No. 9998016 6 V lithium battery for the transmitter

Code No. 306 AA battery for the receiver

Code No. 396 - IR Flash Transmitter Economy

Powerful IR sender for cordless firing of flash units. This sender uses the IR sensitivity of the unit's slave and can be operated without an additional receiver. Also, it can be easily mounted to the camera's hot shoe and then triggered. The sender unit has an ON/OFF switch and a test switch. Supplied with: short sync cable with 3.5 mm plug and 2 batteries type AA.



X DIFFUSION FOILS

HEAVY FROST** very matte

ROLUX ** strongest light diffusion, extremely durable

WHITE DIFFUSION ** medium light diffusion

Available in: 0 = sheets 50 x 60 cm (20" x 23.5") , ** = rolls, per meter, in 1.2 m (47.5") width

X FABRIC DIFFUSERS

Code No. 457 - Diffusion material,

white synthetic (without brighteners), for softboxes, light skys, etc. , width: 2.1 m (82.5")

Supplied in min. 1 m (39"), only full meters

Code No. 456 - Silver Reflector Material, high brilliancy, textured,

black backing, softbox material, width: 1.3 m (51") Supplied in min. 1 m (39"), only full meters



X COLOR GELS

Code No. 717 - SUPERGEL

Sheets 50 x 60 cm (20" x 24")

Extremely heat resistant.

Recommended for use with halogen lamps.

Please request a color swatch.

X CONVERSION FILTERS

Code No. 721 - Conversion Filter blue, standard tungsten to daylight.

Width: approx 1.2 m (48") Supplied in min. 1 m (39"), only full meters.

Code No. 722 - Conversion Filter yellow, daylight to standard tungsten.

Width: approx. 1.2 m (48") Supplied in min. 1 m (39"), only full meters.

Code No. 725 - Conversion Filters Set of conversion filters (4 pcs.)

Suitable for filter holder, Reproflash Kit

Additional conversion filters (booster blue, etc.), grey filters, polarizing filters, mat color gels, various reflection foils, available upon request (see price list).





[STANDS & STUDIO ACCESSORIES]

X CASES AND BAGS

X HENSEL TRANSPORT CASE

Well-travelled professionals know why inconspicuous looking transport cases are a real advantage. The usual appearance and the high manufacturing quality of one of the most famous suitcase manufacturers make this case an absolutely reliable travel partner. The case padding is custom matched to your HENSEL equipment. This case comes with integrated wheels and a pull-handle. An adjustable combination lock guarantees security.

Code No. 2990 – Complete Case III (large blue)

Integrated wheels and pull-handle. For Contra E, as well as accessories.

Outer dimensions: 56 x 81 x 31 cm, inner dimensions: 51 x 75 x 21 cm (WxHxD).



X HENSEL SOFTBAGS

Code No. 4201

HENSEL Softbags are light-weight, padded bags, which are dirt resistant and affordable. These bags are ideal for short outdoor trips as well as for transportation in the car, because they can be carried over the shoulder and the strap can be easily adjusted to fit anyone.

Code No. 4201 - "De Luxe" VII Holdall with wheels! Specifications as item no. 4191, three internal compartments, external dimensions: (WxHxD) 90 x 34 x 33 cm, internal: 78 x 29 x 24 cm, plus an additional 40 mm space in the lid.

Code No. 4191 - "De Luxe" VIII Holdall with wheels! A deceptively spacious holdall with up to four internal compartments and completely new, significantly reinforced wheels. The bag holds flash units, lots of accessories and up to 3 stands (e.g. our item no. 200). The lid of the bag incorporates a mesh pocket for small accessories. And the best thing: A handle and stable wheels on the bottom of the bag take the fear out of fully-packed bags and long walks. Overall dimensions (WxHxD): external 90 x 42 x 36 cm, internal 78 x 35 x 24,5 cm, plus an additional 40 mm space in the lid.

Code No. 4210 - Holdall VI - Mesh insert in the lid for small accessories, padded front pocket, 5 feet, front edge made of rubberised material, shoulder strap with spring clip, blue carrying strap, 1 fixed central compartment (i.e. internal dimensions 2x ~ 200x220 mm), 2 adjustable bases. Dimensions (WxHxD): 48 x 58 x 26 cm (external) and 44 x 50 x 20 cm (internal).

Code No. 4101572 - Backpack, padded - Black, inner dimensions: 29 x 43 x 19 cm (LxHxW). Two adjustable compartments. Lets you safely carry many items on your back: e.g. a Porty generator with head, stand and umbrella, as well as some accessories. Dirt and water repellent material. Wide, comfortable carrying straps with rubber slip protectors.

Code No. 4205 - Holdall - e transport bag - Handy bag for up to two e-flash units or similar, with an adjustable partition wall. The lid of the bag incorporates a mesh pocket for small accessories, plus there is a pocket for accessories on the front. Dimensions (WxHxD): Approx. 58 x 22 x 28 cm (external) and 56 x 18 x 22 cm (internal).

Code No. 989 - Softbag for Reflectors - Black, outer dimensions: 37 x 40 x 39 cm, inner dim.: 36 x 37 x 35 cm (LxHxW). With inside pocket for honeycomb grids.

Code No. 990 - Softbag for 22" Beauty Dish - Black, outer dimensions: diameter 58 cm x 15 cm. With inside pocket for 7" honeycomb/accessory. For one 22" Beauty Dish with 7" honeycomb.



X HENSEL STAND BAGS

Code No. 3750 - Bag for Stand, padded

Safe protection for your valuable camera stands. Big enough to accommodate stands with panning heads. Inside dimensions: 18 cm x 110 cm

Code No. 2980 - Padded stand bag

Specifications as item no. 3750 – internal dimensions: 18 x 90 cm

Code No. 991 - Umbrella bag

Black, bag for umbrellas up to 105 cm diameter (open) or rather 74 cm length.





[CEILING MOUNTED SYSTEMS]

✕ ECONOMY & DOUBLE-E SYSTEM



Work quickly and reliable by concentrating on the essentials: create any set and lighting arrangement without worrying about trouble some stands and cables. Studio Management from HENSEL.

✕ LIGHTING WITH STYLE

The assembly can either be carried out (partially) by yourself or by the HENSEL Team or other qualified partner companies. Trained HENSEL assistants are at your side for special designs: together, you can lay out your own individual system configuration "on site". Your plans are then implemented by the HENSEL factory team using advanced manufacturing methods and decades of experience. Consultation and factory service at HENSEL.

Made in Germany



The carriages and double carriages of both systems have adjustable brakes and metal ball bearings with a special plastic extrusion. The bearings and the special wheel flange ensure precise, easy and quiet movement of the carriage. Long (incoming) cables are also no problem. All cable carriages have four plastic rollers and a rotating cable attachment so that cables move freely and do not interrupt work. Optimum operating comfort to the last detail.



Two basic systems with a wide range of system components to match every need. Both systems are available with black anodised effect at an extra charge.



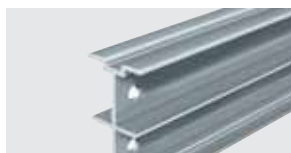


[CEILING MOUNTED SYSTEMS]

✕ ECONOMY SYSTEM



All good things come from above: ceiling rail systems make studio work easier and much more economical. ECONOMY rails offer smooth, reliable adjustment and good loadability. Rail spacing 3 m, and up to 4.5 m with low loads. And with three sliding rails, even 6 m width is possible. Expandable with additional pantographs and gantries.



Code No. 816 Sliding rail/gantry 1.5 m

Code No. 815 Sliding rail/gantry 3 m

Code No. 818 Sliding rail/gantry 4.5 m

Code No. 797 Sliding rail/gantry 6 m

✕ IDEAL FOR SMALL TO MEDIUM-SIZED STUDIOS

NO-COMPROMISE QUALITY -
ATTRACTIVE PRICE

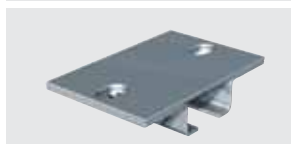


Code No. 805 Endstop for sliding rail/gantry

Code No. 8050 Endstop with branching box for electrical installation (similar to Code No. 770, Double-E, no illustration)



Code No. 813 Intermediate stop



Code No. 810 Standard ceiling bracket for rails on flat ceilings



Code No. 811 Universal ceiling bracket for suspensions etc.

Code No. 812 90° assembly angle for wall-to-wall installation (upper part of ceiling bracket)



Code No. 809 Rail connector for sliding rails



Code No. 807 Carriage with brake (e.g. for pantographs, rotating bracket etc.)

Code No. 762 L-angle with branching box for electrical installation for attachment to carriages (no illustration).



Code No. 814 Carriage with brake and spigot (3/8") for extension tubes, equipment assembly etc.



Code No. 808 Double carriage, rotating, with brake for gantries



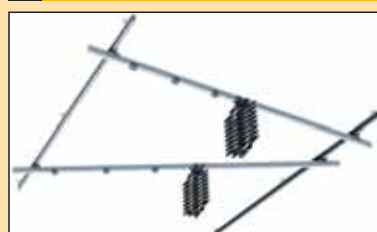
Code No. 806 Cable carriage with rotating cable fixture

Code No. 817 Mains cable, 10 m (no illustration)

✕ ECONOMY KITS

Economical basic combination kits, expandable even after installation with gantries or pantographs. Can be self-assembled.

➔ ECONOMY KIT SMALL (3 x 3 m)



Code No. 801 consisting of:

- 2 pcs. Code No. 815 Sliding rails 3 m
- 2 pcs. Code No. 815 Gantries 3 m
- 2 pcs. Code No. 489 Pantographs 2.2 m up to 14 kg (max.), with 2 springs à 5 kg
- 2 pcs. Code No. 807 Carriage with brake for pantogr.
- 4 pcs. Code No. 808 Double carriage with brake, rotating for gantries
- 6 pcs. Code No. 810 Ceiling brackets, standard
- 8 pcs. Code No. 805 Endstop for rails and gantries
- 6 pcs. Code No. 806 Cable carriage w. rot. cable fixture
- 2 pcs. Code No. 817 Mains cable, 10 m

➔ ECONOMY KIT STANDARD (3 x 4,5 m)



Code No. 802 consisting of:

- 2 pcs. Code No. 818 Sliding rails 4,5 m
- 2 pcs. Code No. 815 Gantries 3 m
- 3 pcs. Code No. 489 Pantographs 2.2 m up to 14 kg (max.), with 3 springs à 5 kg
- 3 pcs. Code No. 807 Carriage with brake for pantogr.
- 4 pcs. Code No. 808 Double carriage with brake, rotating for gantries
- 8 pcs. Code No. 810 Ceiling brackets, standard
- 8 pcs. Code No. 805 Endstop for rails and gantries
- 9 pcs. Code No. 806 Cable carriage w. rot. cable fixture
- 3 pcs. Code No. 817 Mains cable, 10 m

➔ ECONOMY KIT LARGE (3 x 6 m)



Code No. 803 consisting of:

- 2 pcs. Code No. 797 Sliding rails 6 m (4 x 3 m rails + 2 connectors, Code No. 809)
- 3 pcs. Code No. 815 Gantries 3 m
- 4 pcs. Code No. 489 Pantographs 2.2 m up to 14 kg (max.), with 3 springs à 5 kg and 1 spring à 7 kg
- 4 pcs. Code No. 807 Carriage with brake for pantogr.
- 6 pcs. Code No. 808 Double carriage with brake, rotating for gantries
- 10 pcs. Code No. 810 Ceiling brackets, standard
- 10 pcs. Code No. 805 Endstop for rails and gantries
- 12 pcs. Code No. 806 Cable carriage w. rot. cable fixture
- 4 pcs. Code No. 817 Mains cable, 10 m

* All kits can be ordered with different springs.



[CEILING MOUNTED SYSTEMS]

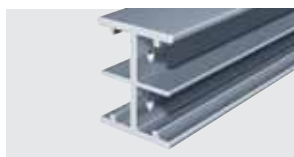
DOUBLE - E SYSTEM



An enormous load capacity makes this system well-suited to handle extreme stress, such as suspending generators, light-banks etc. Individual expansion with contact rails, motorized pantographs, motorized rotating brackets, background systems and motorized adjustment and focusing of lamp heads and spots make this a ceiling system that covers every need and which can be adapted to any type of structural conditions (beams, sloped ceilings, varying spacing of supports etc.). With just two rails gantry widths of up to 6 m are possible. System components with a "modular" design for every set-up variation.

FOR EVERY SITUATION - IDEAL FOR LARGE STUDIOS

INNOVATIVE AND INDIVIDUAL



Code No. 754 Sliding rails/gantry 2 m

Code No. 753 Sliding rails/gantry 3 m

Code No. 752 Sliding rails/gantry 4 m

Code No. 751 Sliding rails/gantry 6 m



Code No. 764 Endstop for sliding rails/gantry

Code No. 765 Endstop for sliding rails/gantry, pre-assembled (drilled holes in rails)



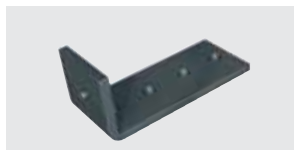
Code No. 770 Rail endstop with branching box for electrical installation



Code No. 766 Intermediate stop



Code No. 761 Standard ceiling bracket for sliding rails, for flat ceilings



Code No. 780 Suspension angle for ceiling rails, in combination with Code No. 763 (60 x 120 mm)



Code No. 781 Perforated plate for ceiling suspension, 1 m, cut to size



Code No. 750 Ceiling rail bracket for wall attachment

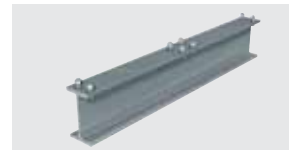


Code No. 763 Universal ceiling rail bracket for suspension



Code No. 758 Rail connector for sliding rails, unassembled

Code No. 759 Rail connector for sliding rails, pre-assembled (drilled holes in rails)



Code No. 757 Special rail connector for gantries, pre-assembled, including gantry reinforcement



Code No. 755 Carriage with brake (e.g. for pantograph, rotating bracket etc.)



Code No. 756 Carriage with brake and attachment spigot 3/8" (for extension tubes, installation of units etc.)



Code No. 762 L-angle with branching box for electrical installation, for attachment to carriages



Code No. 760 Double carriage, rotating, with brake, for gantries



Code No. 767 Cable carriage with rotating cable fixture



Code No. 885 Lift reel with carabiner hook

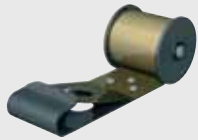
Code No. 344 Flash cable suspension with lift reel

Code No. 817 Mains cable, 10 m (no illustration)



[CEILING MOUNTED SYSTEMS]

✕ ACCESSORIES ECONOMY & DOUBLE-E SYSTEM



Code No. 491 Replacement spring for manual double pantograph, available in 5kg, 7kg or 9kg



Code No. 769 Safety rope for securing units to pantographs.



Code No. 488 Safety catch for pantographs. Additional security in event of pantograph breakage.

Code No. 949 Lift reel with shackle, spare (adjustable counterbalance weight)



Code No. 789 29.5 mm spigot with threaded spigot M 3/8"



Code No. 783 29.5 mm spigot with plate



Code No. 784 29.5 mm spigot with thread 3/8" and wing nut



Code No. 785 16.2 mm mounting shell, rotating, with 3/8" thread and lock nut



Code No. 787 Mounting shell 16.2 mm, with plate for light banks etc.



Code No. 788 Counterbalance weight for pantographs.
Essential when installing units without counterbalance weight in combination with heavy attachments! Pantographs may become damaged if not hung plumb.



Code No. 493 Extension rod 0.5 m

Code No. 494 Extension rod 1 m
Special lengths available!

Code No. 489

Manual double pantograph up to 14 kg.
Length: 0.33 m (min.) to 2.2 m (max.), with spring according to specifications, stepless adjustment of weight up to 5 kg. Spigot M 3/8", Ø 16 mm.



When ordering, please specify required spring strength!
Determination of spring weight: Correct spring tensioning weight = weight of unit + accessories + 2 kg for dead weight of pantograph.
A max. of 2 springs can be suspended. A carriage Code No. 807 (ECONOMY System) or Code No. 755 (DOUBLE-E System) is required.
5 kg springs will be supplied for orders without specifications.

Code No. 487

Motorized pantograph up to 15 kg.
Length: 0.33 m (min.) to 3 m (max.), with terminal box. Ø 29.5 mm attachment shell!

A carriage (Code No. 755 or Code No. 807) is also required.
Lengths may vary!

✕ TELESCOPIC EXTENSION

for Ceiling Systems and Ceiling Mounting. Telescope system with integrated counter weight. Infinitely extendable, self-fixing by flexible adjustable load. Both sides can take a 3/8" or 1/4" thread (Ø 16mm). Additional Safety: Push-button lock on thread insertion. Additionally required: a suitable sliding carriage with thread/plate or similar. Maximum load: 12 kg

Code No. 8003248 Telescoping, extendable from 85 cm to 203 cm

Code No. 8003249 Telescoping extension, 60 to 128 cm





[CEILING MOUNTED SYSTEMS]

✕ ACCESSORIES ECONOMY & DOUBLE-E SYSTEM

→ ACCESSORIES FOR CEILING SYSTEMS



Code No. 228

Generator bracket, rotating, for two generators, rod length: 2 m (special lengths available) including longer carriage for DOUBLE-E. Special designs for only one generator are also possible.

→ CONTACT RAILS & ACCESSORIES



Code No. 771-773



Code No. 778



Code No. 804



Code No. 779



Code No. 819



Code No. 813



Code No. 774

Contact rails supply power to the units integrated in the ceiling mounted rail system, and is always attached parallel to a sliding rail. Especially with large systems a contact rail is preferable to a conventional solution with cables and cable carriages. Contact rails can be retrofitted easily at any time.

Code No. 771 Contact rail, 3-pole, 1 phases à 35 A (max.) (observe VDE)

Code No. 772 Contact rail, 4-pole, 2 phases à 35 A (max.) (observe VDE)

Code No. 773 Contact rail, 5-pole, 3 phases à 35 A (max.) (observe VDE)

Code No. 775 Current collector, 3-pole, sliding adapter also required

Code No. 776 Current collector, 4-pole, sliding adapter also required

Code No. 777 Current collector, 5-pole, sliding adapter also required

Code No. 774 Power connecting box, for 3- to 5-pole contact rails

Code No. 778 Contact rail fastener for DOUBLE-E

Code No. 804 Contact rail fastener for ECONOMY

Code No. 779 Sliding adapter for current collector, DOUBLE-E

Code No. 819 Sliding adapter for current collector, ECONOMY

Code No. 766 Intermediate Stops DOUBLE-E 2 pcs. required for each gantry

Code No. 813 Intermediate Stops ECONOMY 2 pcs. required for each gantry

Code No. 744 Contact rail end cap, for 3- to 5-pole contact rails

→ ROTATING BRACKETS/SUSPENSION



Code No. 886

4-point lift reel suspension with rotating bracket for Autolight and Table-Top Autolight, up to max. 1.3 x 2 m. 360° rotation, with individually adjustable reels. Requires four carriages and a double rail (or two winch stands).

Code No. 890

Motorized suspension of Autolight 2 m and 4 m to one rail. With two independent motors.

Please specify required cable lengths.
Two additional carriages are required.

Code No. 238

4-motor rotating bracket for Autolight. Each motor can be controlled independently. Double gantry and 4 additional carriages are required.

Code No. 794

4-motor rotating bracket for Megalight. Double gantry and 4 additional carriages are required. Rotating brackets for longer Megalights on request. Additional support rails are required for lengths of more than 4 m (Autolight) or 3.9 m (Megalight). Check price list.

Code No. 239

Motorized background suspension for gantry, complete with control cabinet. Mounts for the background can be adjusted so that paper widths of up to 3.6 m (max.) can be used. All manual and motorized HENSEL axles can be used optionally. Backlighting can be placed easily, even directly from behind.

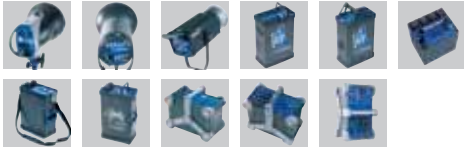


TECHNICAL FEATURES



GENERATORS & COMPACT FLASH HEADS

1 > eFlash **2** > EXPERT Pro/Plus **3** > MONO MAX
4 > VELA S **5** > VELA AS **6** > PORTY B **7** > PORTY Premium **8** > TRIA/TRIA Speed **9** > TRIA AS **10** > TRIA 24 S **11** > PRO MINI



1 2 3 4 5 6 7 8 9 10 11 Automatic Power Drop System - Internal power reduction when the power is reduced, without flash triggering. During the time of the power reduction, flashing is inhibited. Wrong handling or faulty exposures are no longer possible. Switched off generators are automatically discharged. This protects your eyes and nerves.



1 2 3 4 5 6 7 8 9 10 11 100% Repeat Accuracy
 The items are precisely stabilized at all power stages. Repeat accuracy of the settings is 100 % guaranteed by a special adjustment technology. This is a requirement for digital photography. The incremental input dialers combine the advantage of a precise, sensitive setting (1/10 f-stops per click) with the approved "analog setting".



2 5 6 7 8 9 10 Tactile Feedback Push Buttons
 High-quality front plate with fluorescent foil for safe handling even in the dark. The doming push buttons allow a very precise feeling when touching. The foil is nearly indestructible and designed for toughest use.



4 5 8 9 10 11 Internal Coding
 Coding of the plug connections guarantees Head / Generator compatibility.



5 8 9 11 "Monitoring" of the Flash Sockets
 Flash Current Monitoring. At each flash output socket flash release is supervised even when a few generators with several flash heads are used. When "ignition interruptions" occur a failure indication will be released at the corresponding output.



4 5 8 9 10 Plugmatic
 A micro switch is integrated in each flash socket. It triggers each head only when flash sockets are plugged correctly in.



2 3 4 5 8 9 10 11 Flash Check
 When a flash has been triggered, the modeling lamp goes off and lights up again after complete recycling. Correct flashing and flash readiness are thus clearly signalized. Switchable (ON/OFF), with control LED.



3 8 9 Second Sync Socket
 Two sync sockets allow the use of connecting generators by means of a special cable (two plugs Ø 6.3 phone plug).



5 7 8 9 Socket Switching
 Each socket can be switched separately and offers a control LED.



2 3 5 6 7 8 9 10 11 To strike the right note - AUDIO, switchable, with control LED. Audio frequency assigned via unit address (ID). Therefore, a kind of "melody" is possible with selected generators.



2 5 8 9 11 Multivoltage
 Multivoltage technology, automatically switchable from 115 V to 230 V.



1 2 3 4 5 6 7 8 9 10 11 Highly Sensitive Photo Slave
 Sensitive photo slave, switchable, with control LED. Even when there is an existing strong ambient light source, you will achieve perfect sensitivity. eFlash not switchable/not LED.



3 8 Free Adjustable Modeling Light
 Modeling light adjustment in 1/10 f-stops ranging from 1/1 to 1/32. Pre-dimming additionally possible via "BIAS" (-1f, -2f) by 1 or 2 f-stops. The modeling light can optionally be operated in "PROP" (proportional to the chosen flash energy or free adjustment) mode. Also, the modeling light can be switched off or operated in "Flash Check" mode.



2 Actively illuminated display (Only EH PRO PLUS)
 The active illumination offers best working comfort. Even in total darkness easy to operate.



2 3 4 5 6 7 8 9 11 "Modeling light full / prop / off" The modeling light is independently switchable. Its brightness can be set to adjust in proportion to flash power or to remain at the maximum setting regardless of flash power. (The Porty only allows for switching the modeling light on/off directly or via timer control. Dimming is not possible.)



2 "Automatic energy-saving mode" for the modeling light
 When the equipment is not in use, the modeling light is automatically dimmed (with a delay adjustable from 5 to 90 min.). On waking up, the modeling light is automatically set to the previous value. The benefits are less waste heat, longer lamp life and reduced power consumption.



[TECHNICAL FEATURES]



GENERATORS & COMPACT FLASH HEADS

1 > eFlash **2** > EXPERT Pro/Plus **3** > MONO MAX

4 > VELA S **5** > VELA AS **6** > PORTY B **7** > PORTY Premium **8** > TRIA/TRIA Speed **9** > TRIA AS **10** > TRIA 24 S **11** > PRO MINI



2 7 11 Radio Remote Control

The Radio Remote Control allows to not only trigger the unit via radio, but also adjust the output and switch the modeling light. 4 different channels can be worked with so that several work groups are able to work in one studio without disturbing each other.



2 Improved reflector mounting with adjustment

The reflector mounting has a massive metal guidance which allows an easy attachment of the reflectors. This helps to protect the flash tube. An adjustment avoids reliable the unintentional release.



5 7 9 11 Capacity shifting

The automatic capacity shifting has three grave advantages! These units have best possible colour temperature stability at fastest flash durations with automatic, power-adopted switching. Safer, faster and more reliable than manual!



8 9 Turbo Ignition - Safe triggering of all flash tubes, even with low power.

→ SPECIAL TRIA AS FEATURES



9 CTC Color Temperature Corrected "Intelligent" electronic ensuring the optimal light's colour temperature as constant as possible.

9 Flash Link Remote control for Mac or PC, all functions are remote controllable.

9 AS Mode:

Two independent channels are exactly adjustable over 6 f-stops. Every channel can be equipped with 2 flash heads. Thanks to the preadjusted division of power of 2 kJ for the A-channel and 1 kJ for the B-channel every situation can be lit well.

9 Full Power Mode:

If the B-channel is not used, the whole 3 kJ are available on socket A1 and A2. This is the ideal mode for Spots and Autolights.

9 High Speed Mode:

If the A-channel is switched off, 1000 J are available on socket B1 and B2 with shortest succession and extremely short flash duration. So the "Fashion power pack" is built in!

→ SPECIAL VELA AS FEATURES



5 Symmetrical mode of operation

When the ports A1 and / or A2 are used the unit operates symmetrically with 47J - 1500 J power output. Additionally, only port "B" can be used which results in even faster flash times (47J to max. 500J).

5 Asymmetrical mode of operation

Power output is asymmetrically distributed if one of the A ports is used together with the B port. Three different power output ratios can be selected: 1000 J : 500J, 1000 J : 250 J, and 1000 J : 125 J. The power output is adjustable of 1/10 f stop increments.

→ SPECIAL PORTY FEATURES



6 7 Modeling light with programable automatic switch off

Adjustable 2 – 60 min., with or without flash / audio signal.

6 7 Charging socket for recharging the battery inside power pack.

6 7 Battery status indicator (100%, 50%, 10%)

6 7 2 Power sockets

With symmetrical or asymmetrical power distribution.



7 Symmetrical mode of operation - The unit works symmetrically when port A and port B are in use and as long as the power output of port B is not reduced. If only one port is used the maximum power output can be reduced to 600J or 300J. This allows extremely short charge and flash times.

7 Asymmetrical mode of operation - The power output can be set to either symmetrically or asymmetrically when simultaneously working with port A and port B. The following ratios are possible: 900 J : 300 J, 600 J : 600 J, and 600 J : 300 J.

→ SPECIAL PRO MINI FEATURES



11 Asymmetrical operation

The unit allows for both symmetrical and asymmetrical power distribution. In asymmetrical mode, the maximum difference between the sockets A1/A2 and B1/B2 is 2 f-stops.

11 Dedicated flash head range

We offer a new flash head range featuring screw-off cables and extremely small storage sizes. All heads are equipped with the popular Party connector and are compatible with both ranges. Please note the individual limits for the modelling lights!



[TECHNICAL DATAS]

X COMPACT FLASHES & GENERATORS

→ TECHNICAL DATA [COMPACT FLASHES]

Type:	Mono Max 750	Mono Max 1500	Mono Max 3000	Expert Pro/PLUS 250	Expert Pro/PLUS 500	Expert Pro/PLUS 1000	eFlash 250
Code No.	3075	3150	3300	8310 E/8310 8814 E/8814 (Multivoltage)	8330 E/8330 8815 E/8815 (Multivoltage)	8340 E/8340 8816 E/8816 (Multivoltage)	8881 (230 V) 8882 (115 V)
Stored energy:	750 J	1500 J	3000 J	250 J	500 J	1000 J	210 J
Aperture from 1m (2 m), 100 ASA, 1/160:	f 90,7 (f 45,7)*	f 128,7 (f 64,7)*	f 180,7 (f 90,7)*	f 45,7 (f 22,7)**	f 64,7 (f 32,7)**	f 90,7 (f 45,7)**	f 45,3 (f 22,3)**
Modeling lamp	650 W/G 6,35	650 W/G 6,35	650 W/G 6,35	300 W/G 6,35	300 W/G 6,35	300 W/G 6,35	150 W/G 6,35
Recharging up to 1/1:	0,8 s	1,2 s	2,3 s	1,2 s	2,2 s	2,1 s	2,5 s
Recharging up to 1/16:	0,34 s	0,36 s	0,5 s	0,3 s	0,5 s	0,4 s	0,8 s
Flash duration ± 0,1 (1/1 Energy):	1/350 s	1/210 s	1/120 s	1/600 s	1/500 s	1/600 s	1/250
Flash duration ± 0,5 (1/1 Energy):	1/1000 s	1/670 s	1/400 s	1/1800 s	1/1600 s	1/2000 s	1/810 s
Output adjustment flash:	in 1/10 f: 6f	in 1/10 f: 6f	in 1/10 f: 6f	in 1/10 f: 6f	in 1/10 f: 6f	in 1/10 f: 6f	in 1/10 f: 6f
Output adjustment modeling light:	off/full/prop (1/10)	off/full/prop (1/10)	off/full/prop (1/10)	off/full/prop/autored.	off/full/prop/autored.	off/full/prop/autored.	off/full
Remote control:	Cord 5 m, output adj. n 2/10, standby, test, mod, lamp, syn.			Radio control, power, adj. mod. lamp, syn., test			—
Weight:	4,3 kg	6,4 kg	8,0 kg	2,75 kg	2,87 kg	3,9 kg	1,37 kg
Measurements, L x W x H:	47,5 x 21 x 19,6 cm	47,5 x 21 x 19,6 cm	55 x 21 x 19,6 cm	33 x 15 x 23 cm	33 x 15 x 23 cm	39,5 x 15 x 23 cm	26 x 13,6 x 22 cm
Scope of delivery:	including flash tube, mains and sync cable and safety cap.			including flash tube, mains and sync cable, glass dome, stand adapter and safety cap.			including flash tube, mains and sync cable, stand adapter and safety cap.

Status 8/07: Technical data subject to change. No guarantee for misprints. The listed values are guide values and should not be understood as binding in a legal sense. The values can differ due to tolerances in used components.

Values attained at 230 V/50 Hz voltage. * With High Intensity Reflector. ** With 12" Reflector.

→ TECHNICAL DATA [GENERATORS]

Type:	TRIA 1500 Speed	TRIA 1500 S	TRIA 3000 S	TRIA 3000 AS	TRIA 6000 S	TRIA 24 S	VELA 1500 S	VELA 1500 AS	PRO MINI 1200 AS	PORTY 1200 B	PORTY Premium Plus
Code No.	3500 (230 V) 3600 (Multivoltage)	3515 (230 V) 3615 (Multivoltage)	3530 (230 V) 3630 (Multivoltage)	— 3631 (Multivoltage)	3560 (230 V) 3660 (Multivoltage)	4370 —	3802 (230 V) —	— 3800 (Multivoltage)	3512	495 —	4954 —
Stored energy:	1500 J	1500 J	3000 J	3000 J	6000 J	2400 J	1500 J	1500 J	1200 J	1200 J	1200 J
Aperture at 100 ASA 2 m distance:	f 64,4 *	f 64,5 *	f 90,5 *	f 90,5 *	f 128,4 *	f 90 *	f 64,4 **	f 64,4 **	f 64,2 **	f 64,2 **	f 64,2 **
Flash Duration ± 0,5: 1 EHT 3000	1/2200	1/800	1/500	1/790 (A-channel) 1/1000 (B-channel)	1/330 (1 MH 6000)	1/600 (1 EH PRO 3000)	1/650 s.	1/650 s. - 1/3250 s.	1/400	1/980 (1 EHT 1200)	1/1100 s. - (1200J) 1/3000 s. - (300J)
3 MH 3000 Speed	1/7400	1/2500	1/1700	1/2500		1/1000 (2 EH PRO 3000)			1/1200 (4 Heads)		
Flash Sequence in sec. (230 V):											
Normal Recycling, 100 %:	0,70 s	1,7 s	2,0 s	2,0 s	4,25 s	2,3 s	1,9 s	1,9 s	1,2 s	5,8 s	2,7 s
Normal Recycling, min. energy:	0,25 s	0,4 s	0,5 s	0,3 s	0,55 s	0,45 s	0,2 s	0,2 s	0,2 s	0,8 s	0,4 s
Output Adjustment in 1/10 stops:	6 f	6 f	6 f	7,6 f	6 f	6 f	5 f	6,5 f	6 f	6 f	6 f
Output Distribution:	symmetrical	symmetrical	symmetrical	asymmetrical	symmetrical	symmetrical	symmetrical	asymmetrical	asymmetrical	symmetrical	asymmetrical
Flash Outlets/Number:	3	3	3	4	3	2	2	3	4	2	2
Weight in kg:	8,0	8,0	9,3	12,6	17,1	7,5	5	5,6	5,3	6,45	8,95
Measurements, L x W x H in cm	34,5 x 19,5 x 28,5	34,5 x 19,5 x 28,5	34,5 x 19,5 x 28,5	34,5 x 19,5 x 41,5	34,5 x 19,5 x 44	34,5 x 19,5 x 36	20,4 x 11,9 x 36	20,4 x 11,9 x 36	21 x 17,6 x 24	21 x 12,4 x 27	21 x 12,4 x 32,1
Scope of delivery:	Generator, user manual, mains and sync cable.									Party generator incl. battery, user manual and carrying strap.	

Status 8/07: Technical data subject to change. No guarantee for misprints. The listed values are guide values and should not be considered as legally binding. The values can fluctuate due to tolerances in used components.

Values attained at 230 V/50 Hz voltage. * Intensity Reflector, ** 12" Reflector.



TECHNICAL DATAS

FLASH HEADS & SPOTS



TECHNICAL DATA [FLASH HEADS]

Typ:	EH PRO	EH PRO 6000	EH PRO MINI	MH 3000	MH 3000 SPEED	MH MH 6000	EH PRO MINI 1200 PORTY	RINGFLASH 1200 P-XS PORTY	RINGFLASH 3000 XS
Code No.	3599	3603	3605	553	555	554	3602	3410	3430
Output:	3000 J	6000 J	3000 J	3500 J	3500 J	6000 J	1200 J (also for HT 8000)	1500 J 10000 J/min.	3500 15000 J/min.
Connection:	20 way-plug, long		Round-Plug				PORTY round plug	PORTY round plug	20 way-plug, long
Modeling lamp up to:	650 W	650 W	650 W	650 W	650 W	650 W	100 W	No	No
Aperture from 2m, 100 ASA, $\pm 1/60$, without Reflector:								22 1/10 with PORTY Premium AS	45,4 with TRIA 3000 S
Flash duration 0,5: Output Adjustment 100%								1/1300 s	1/600 s
Cooling Fan:	Yes	Yes	Yes	Yes	Yes	Yes	No	No	No
Reflector connection:	10 cm	10 cm	10 cm	15,5 cm	15,5 cm	15,5 cm	10 cm	Innerdiameter 100 mm	
Cable lenght:	5 m	5 m	5/7/10 m	5 m	5 m	5 m	5/7/10 m	5 m	5 m
Multivoltage:	Yes	Yes	Yes	No	No	No	No	No	No
On-Off Switch for Flash and Halogen Light:	Yes	Yes	Yes	Yes	Yes	Yes	Yes	No	No
Plugable Flash Tube:	Yes	No	No	No	No	No	Yes	No	No
Reflector Quick Change Mechanism:	Yes	Yes	Yes	Yes	Yes	Yes	Yes	No	No
Solid Handle:	Yes	Yes	Yes	Yes	Yes	Yes	Yes	Yes	Yes
Glass Dome:	Yes	Yes	Yes	No	No	Yes	Yes	Yes	Yes
Integrated Umbrella Holder with clamp:	Yes	Yes	Yes	Yes	Yes	Yes	Yes	No	No
Weight in kg (with 5m cable):	3,1	3,1	2,7	3,2	3,2	3,3	2,6	1,8	1,8
Dimensions in cm L x W x H:	24 x 15 x 23	24 x 15 x 23	19 x 12 x 16 (without cable)	16,3 x 16,7 x 21 (without swivel bracket)	16,3 x 16,7 x 21	16,3 x 16,7 x 21	19 x 12 x 16 (without cable)	20,2 x 32,5 x 6,1 (without Camera holder, Measurements)	20,2 x 32,5 x 6,1 (without Camera holder, Measurements)
Supplied with:	Flash Head, glassdome, flash tube, modeling lamp, safety cap, stand adapter.							Ringflash with Camera holder, Connection 1/4" und 1/8",	
Equipment:								Frosted glass, OctaSunHaze RF.	
Status 8/07: technical data subject to change. No guarantee for misprints. The listed values are guide values and should not be understood as binding in a legal sense. The values can differ due to tolerances in used components. Values attained at 230 V/50 Hz voltage.									



TECHNICAL DATA [SPOTS]

Type:	STARSPOT 1500 P	STARSPOT 3000	FRESNEL SPOT 3000	FRESNEL SPOT 6000	MAXI SPOT 3000	MAXI SPOT 6000	SUPERSPOT Wide-Angle 3000	SUPERSPOT Wide-Angle 6000
Code No.:	188	190	159	939	339	347	171 (Triple Lens Spot)	175 (Triple Lens Spot)
Maximum Output, Flash:	1500 J	3000 J	3500 J	8000 J	3500 J	8000 J	3500 J	8000 J
Maximum Capacity Modeling Light: Socket:	50 W / 12V G 6,35 / code 1850	650 W G 6,35 / code 236	650 W G 6,35 / code 129	650 W G 6,35 / code 129	650 W G 6,35 / code 129	650 W G 6,35 / code 129	650 W G 6,35 / code 129	650 W G 6,35 / code 129
Aperture from 2 m, at 100 ASA, narrow focusing, 1/60 s, full power:	45	64	90,6	128,4	90,6	128,2	64 (32,5) (white) mirror	64,8 (45,3) (white) mirror
Diameter of the Circle of Illumination, from 2 m, min./max.:	90 / 190 cm	90 / 190 cm	50 / 210 cm	50 / 210 cm	50 / 240 cm	50 / 240 cm	85 / 190 cm (without iris diaphragm)	85 / 190 cm (without iris diaphragm)
Weight approx:	5 kg	5 kg	9,5 kg	9,5 kg	12,5 kg	12,5 kg	11,3 kg	11,3 kg
Connection:	Party (round plug)	20-way flash plug	20-way flash plug	20-way flash plug	20-way flash plug	20-way flash plug	20-way flash plug	20-way flash plug
Power Control:	depending on generator		depending on generator		depending on generator		depending on generator	
Equipment:	fresnel lens Ø 10,5 cm, full metal housing, fan, modeling lamp can be switched separately on the housing, focusing by thread mechanism and accessory boxes		fresnel lens Ø 20 cm, full metal housing, fan, modeling lamp can be switched separately on the housing, focusing by thread mechanism and accessory boxes		fresnel lens Ø 30 cm,, full metal housing, fan, modeling lamp can be switched separately on the housing, focusing by thread mechanism and accessory boxes		zoom lens, triple lens spot, with quick locking mechanism, 360° rotating sliding levers for effects, removable lamp/flash device, high-quality aluminium housing, fan and two accessory boxes.	
Dimensions: L x W x H, without bracket:	25,5 x 20,5 x 23,5 cm		45 x 34,5 x 36,5 cm		37,5 x 48,5 x 46,5 cm		57,5 x 27 x 24 cm	
Scope of Delivery:	incl. flash tube, filter holder with filter, connection cable, fixed, 5 m.		incl. flash tube, connection cable, fixed, 5 m.		incl. flash tube, connection cable, fixed, 5 m.		incl. flash tube, connection cable 5m for flash generator, iris diaphragm, and two dust filters. white mirror (standard).	
Spare Part Flash Tube:	Code No. 9450720	Code No. 9450720	Code No. 9450840	Code No. 9450860 (firmly fixed)	Code No. 9450810	Code No. 9450860	Code No. 9450700	Code No. 9450860 (firmly fixed)
Status 8/07: Technical data subject to change. The listed values are guide values and should not be understood as binding in a legal sense. The values can fluctuate due to tolerances in parts. Values attained at 230 V/50 Hz voltage.								



all over the world

VISIT US IN THE WORLDWIDE WEB > WWW.HENSEL.DE

Algeria - Andorra - Argentina - Australia - Austria - Bahrain - Belgium - Bolivia - Brazil - Bulgaria - Canada - Chile - China - Cyprus - Czech Republic - Denmark - Egypt - Estonia - Finland - France - Great Britain - Greece - Hong Kong - Hungary - India - Indonesia - Iceland - Italy - Japan - Jordan - Kazakhstan - Korea - Kuwait - Latvia - Lebanon - Libya - Luxembourg - Malaysia - Netherland - New Zealand - Nigeria - Norway - Oman - Pakistan - Peru - Philippines - Poland - Portugal - Romania - Russia - Saudi Arabia - Singapore - Slovakia - Slovenia - Spain - South Africa - Sri Lanka - Suriname - Sweden - Switzerland - Syria - Taiwan - Thailand - Tunesia - Turkey - Ukraina - Viet Nam - UAE - USA - Yemen

In more than 65 countries worldwide we are represented by well trained distributors to supply photographers with innovative flash ideas "Made in Germany". Don't hesitate to contact us and we will help you to find the partner next to you.

Please note: This catalogue contains the majority of products produced/distributed by Hensel Studiotechnik. In countries other than Germany product lines or delivery size may vary. Please consult your sales assistant! With publication of this catalogue the validity of all previous catalogues expires. Technical data subject to change. No guarantee for misprints. The listed values are guide values and should not be understood as binding in a legal sense.



[STANDS & STUDIO ACCESSORIES]

 COLORAMA

BACKGROUND PAPERS OF HIGHEST QUALITY

All colors available in the sizes: 1.35 m x 11 m (4.4 ft. x 36 ft.), 2.72 m x 11 m (9 ft. x 36 ft.). The colors marked with a * are also available in: 2.72 m x 25 m (9 ft. x 82 ft.)
Arctic White and Polar White also available in: 2.72 m x 50 m (9 ft. x 164 ft.) - White, Black, Charcoal, Chromablue, Lagoon and Smoke Grey also in the size: 3.55 m x 30 m (11.65 ft. x 98 ft.) - **Special lengths available!**





> FOCUS ON FLASH <

MADE IN GERMANY - WWW.HENSEL.DE

HENSEL
performing light

Robert-Bunsen-Str.3 - D-97076 Würzburg - Germany
Phone: +49-931-27881-0 - Fax: +49-931-27881-50
E-Mail: info@hensel.de - Internet: www.hensel.de